

Product Datasheet

F(ab')₂ Mouse IgG (H&L) Antibody Phycoerythrin conjugated Pre-adsorbed (orb348268)

Catalog Number	orb348268
Category	Antibodies
Description	F(ab') ₂ MOUSE IgG (H&L) antibody (RPE)
Clonality	Polyclonal
Species/Host	Goat
Isotype	IgG F(ab') ₂
Conjugation	RPE
Reactivity	Mouse
Form/Appearance	Lyophilized
Concentration	0.5 mg/mL
Buffer/Preservatives	Preservative: 0.01% (w/v) Sodium Azide. Stabilizer: 10 mg/mL Bovine Serum Albumin (rAlbumin) - Immunoglobulin and Protease free; Buffer: 0.02 M Potassium Phosphate, 0.15 M Sodium Chloride, pH 7.2
Purity	F(ab') ₂ Anti-MOUSE IgG (H&L) (GOAT) Antibody was prepared from monospecific antiserum by immunoaffinity chromatography using Mouse IgG coupled to agarose beads followed by solid phase adsorption(s) to remove any unwanted reactivities, pepsin digestion and chromatographic separation. F(ab') ₂ Anti-MOUSE IgG (H&L) (GOAT) Antibody assays by immunoelectrophoresis resulted in a single precipitin arc against anti-Phycoerythrin, anti-Goat Serum, Mouse IgG and Mouse Serum. No reaction was observed against anti-Pepsin, anti-Goat IgG F(c) or Bovine Chicken Goat Guinea Pig Horse Hamster Rabbit Rat and Sheep Serum Proteins.

Biorbyt Ltd.

7 Signet Court, Swann Road
Cambridge
CB5 8LA
United Kingdom

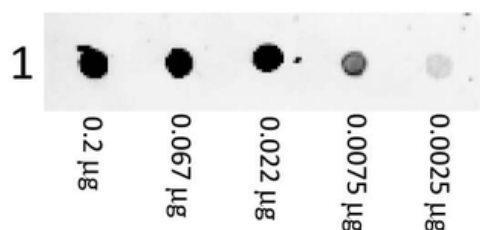
Email: info@biorbyt.com, support@biorbyt.com
Phone: +44 (0)1223 859353 | Fax: +1 (415) 651-8558

Biorbyt LLC

68 TW Alexander Drive
Research Triangle Park
Durham
NC 27713
United States

Email: info@biorbyt.com, support@biorbyt.com
Phone: +1 (415) 906-5211 | Fax: +1 (415) 651-8558

Immunogen	F(ab') ₂ anti-Mouse IgG (H&L) was produced by repeated immunization with Mouse IgG whole molecule in goat.
Tested applications	DOT, FC, IF, WB
Dilution range	FC: 1:100 - 1:250, IF: 1:100 - 1:250
Application notes	F(ab') ₂ Anti-Mouse IgG (H&L) Phycoerythrin Conjugated Antibody has been tested by dot blot and western blot and is suitable for immunomicroscopy and flow cytometry or FACS analysis as well as other antibody based fluorescent assays requiring extremely low background levels, absence of F(c) mediated binding, lot-to-lot consistency, high titer and specificity. The maximum amount of reagent required to stain 1 x 10 ⁶ cells in flow cytometry is approximately 1.0 µg of antibody conjugate. Lesser amounts of reagent may be sufficient for staining. Optimal titers for other applications should be determined by the researcher. As a general guideline dilutions of 1:100 to 1:250 should be suitable for most applications.
Antibody Type	Secondary Antibody
Storage	Store vial at 4° C prior to restoration. Restore with deionized water (or equivalent). This product is stable at 4° C as an undiluted liquid. Dilute only prior to immediate use. Centrifuge product if not completely clear after standing at room temperature. Do not freeze after reconstitution. Store reagent in the dark. Use subdued lighting during handling and incubation of cells prior to analysis.
Note	For research use only



Dot Blot of Phycoerythrin conjugated Goat F(ab')₂ Anti Mouse IgG (H&L) Antibody. Lane 1: Mouse IgG. Load: A three-fold serial dilution starting at 200 ng. Primary Antibody: None. Secondary Antibody: F(ab')₂ Anti-Mouse IgG (H&L) (GOAT) Antibody Phycoerythrin conjugated secondary antibody was used at 1:1000 for 1 Hour at RT. Blocking: 5% Blotto for 1 Hour at 20°C.

Biorbyt Ltd.

7 Signet Court, Swann Road
Cambridge
CB5 8LA
United Kingdom

Email: info@biorbyt.com, support@biorbyt.com
Phone: [+44 \(0\)1223 859353](tel:+44(0)1223859353) | Fax: [+1 \(415\) 651-8558](tel:+1(415)651-8558)

Biorbyt LLC

68 TW Alexander Drive
Research Triangle Park
Durham
NC 27713
United States

Email: info@biorbyt.com, support@biorbyt.com
Phone: [+1 \(415\) 906-5211](tel:+1(415)906-5211) | Fax: [+1 \(415\) 651-8558](tel:+1(415)651-8558)