

Product Datasheet

F(ab')₂ Bovine IgG (H&L) Antibody Fluorescein Conjugated (orb348075)

Catalog Number	orb348075
Category	Antibodies
Description	F(ab') ₂ Bovine IgG (H&L) antibody (FITC)
Clonality	Polyclonal
Species/Host	Rabbit
Isotype	IgG F(ab') ₂
Conjugation	FITC
Reactivity	Bovine
Form/Appearance	Lyophilized
Concentration	1.0 mg/mL
Buffer/Preservatives	Preservative: 0.01% (w/v) Sodium Azide. Stabilizer: 10 mg/mL Bovine Serum Albumin (rAlbumin) - Immunoglobulin and Protease free; Buffer: 0.02 M Potassium Phosphate, 0.15 M Sodium Chloride, pH 7.2
Purity	This product was prepared from monospecific antiserum by immunoaffinity chromatography using Bovine IgG coupled to agarose beads followed by solid phase adsorption(s) to remove any unwanted reactivities, pepsin digestion and chromatographic separation. Assay by immunoelectrophoresis resulted in a single precipitin arc against anti-Fluorescein, anti-Rabbit Serum, Bovine IgG and Bovine Serum. No reaction was observed against anti-Pepsin or anti-Rabbit IgG F(c). Limited reactivity will occur against Armenian Hamster IgG.
Immunogen	Bovine IgG whole molecule

Biorbyt Ltd.

7 Signet Court, Swann Road
Cambridge
CB5 8LA
United Kingdom

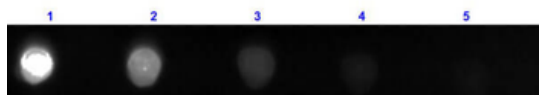
Email: info@biorbyt.com, support@biorbyt.com
Phone: [+44 \(0\)1223 859353](tel:+44(0)1223859353) | Fax: [+1 \(415\) 651-8558](tel:+1(415)651-8558)

Biorbyt LLC

68 TW Alexander Drive
Research Triangle Park
Durham
NC 27713-2847
United States

Email: info@biorbyt.com, support@biorbyt.com
Phone: [+1 \(415\) 906-5211](tel:+1(415)906-5211) | Fax: [+1 \(415\) 651-8558](tel:+1(415)651-8558)

Tested applications	DOT, FC, FLISA, IF
Dilution range	FLISA: 1:10,000 - 1:50,000, FC: 1:500 - 1:2,500, IF: 1:1,000 - 1:5,000
Application notes	F(ab') ₂ Anti-Bovine IgG Fluorescein conjugated antibody has been tested by dot blot and is designed for immunofluorescence microscopy, fluorescence based plate assays (FLISA) and fluorescent western blotting. This product is also suitable for multiplex analysis, including multicolor imaging, utilizing various commercial platforms.
Antibody Type	Secondary Antibody
Storage	Store vial at 4° C prior to restoration. For extended storage aliquot contents and freeze at -20° C or below. Avoid cycles of freezing and thawing. Centrifuge product if not completely clear after standing at room temperature. This product is stable for several weeks at 4° C as an undiluted liquid. Dilute only prior to immediate use.
Note	For research use only
Expiration Date	12 months from date of receipt.



Dot Blot results of Rabbit F(ab')₂ Anti-Bovine IgG Antibody Fluorescein Conjugated. Dots are Bovine IgG at (1) 100 ng, (2) 33.3 ng, (3) 11.1 ng, (4) 3.70 ng, (5) 1.23 ng. Blocking: orb348637 for 30 min at RT. Primary Antibody: Rabbit F(ab')₂ Anti-Bovine IgG Antibody FITC at 1 µg/ml for 1hr at RT. Secondary Antibody: none.

Biorbyt Ltd.

7 Signet Court, Swann Road
Cambridge
CB5 8LA
United Kingdom

Email: info@biorbyt.com, support@biorbyt.com
Phone: [+44 \(0\)1223 859353](tel:+44(0)1223859353) | Fax: [+1 \(415\) 651-8558](tel:+1(415)651-8558)

Biorbyt LLC

68 TW Alexander Drive
Research Triangle Park
Durham
NC 27713-2847
United States

Email: info@biorbyt.com, support@biorbyt.com
Phone: [+1 \(415\) 906-5211](tel:+1(415)906-5211) | Fax: [+1 \(415\) 651-8558](tel:+1(415)651-8558)