

## Product Datasheet

# Monkey IgM (mu chain) Antibody Fluorescein Conjugated (orb348014)

<b>Catalog Number</b>	orb348014
<b>Category</b>	Antibodies
<b>Description</b>	Monkey IgM (mu chain) antibody (FITC)
<b>Clonality</b>	Polyclonal
<b>Species/Host</b>	Goat
<b>Isotype</b>	IgG
<b>Conjugation</b>	FITC
<b>Reactivity</b>	Monkey
<b>Form/Appearance</b>	Lyophilized
<b>Concentration</b>	1.0 mg/mL
<b>Buffer/Preservatives</b>	0.01% (w/v) Sodium Azide
<b>Purity</b>	This product was prepared from monospecific antiserum by immunoaffinity chromatography using Monkey IgM coupled to agarose beads followed by solid phase adsorption(s) to remove any unwanted reactivities. Assay by immunoelectrophoresis resulted in a single precipitin arc against anti-Fluorescein, anti-Goat Serum, Monkey IgM and Monkey Serum. No reaction was observed against other Monkey heavy or light chain proteins.
<b>Immunogen</b>	Monkey IgM whole molecule
<b>Tested applications</b>	DOT, FC, FLISA, IF, WB

### Biorbyt Ltd.

7 Signet Court, Swann Road  
Cambridge  
CB5 8LA  
United Kingdom

Email: [info@biorbyt.com](mailto:info@biorbyt.com), [support@biorbyt.com](mailto:support@biorbyt.com)  
Phone: +44 (0)1223 859353 | Fax: +1 (415) 651-8558

### Biorbyt LLC

68 TW Alexander Drive  
Research Triangle Park  
Durham  
NC 27713  
United States

Email: [info@biorbyt.com](mailto:info@biorbyt.com), [support@biorbyt.com](mailto:support@biorbyt.com)  
Phone: +1 (415) 906-5211 | Fax: +1 (415) 651-8558

## Dilution range

FLISA: 1:10,000 - 1:50,000, FC: 1:500 - 1:2,500, IF: 1:1,000 - 1:5,000

## Application notes

Anti-Monkey IgM (mu chain) Fluorescein antibody has been tested by dot blot and western blot and is designed for immunofluorescence microscopy, fluorescence based plate assays (FLISA) and fluorescent western blotting. This product is also suitable for multiplex analysis, including multicolor imaging, utilizing various commercial platforms.

## Antibody Type

Secondary Antibody

## Storage

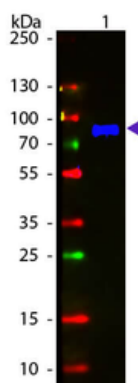
Store vial at 4° C prior to restoration. For extended storage aliquot contents and freeze at -20° C or below. Avoid cycles of freezing and thawing. Centrifuge product if not completely clear after standing at room temperature. This product is stable for several weeks at 4° C as an undiluted liquid. Dilute only prior to immediate use.

## Note

For research use only

Product	Gt-a-Monkey IgG	Gt-a-Monkey IgA	Gt-a-Monkey IgM
Rhesus Serum	+	+	+
Baboon Serum	+	+	+
Cynomolgus Serum	+	+	+
Rhesus IgG	+		
Human IgA		+	
Human IgM			+

This table displays additional reactivity among various species of serum and immunoglobulin. A (+) indicates antibody reactivity to the corresponding target.



Western Blot of Fluorescein conjugated Goat Anti-Monkey IgM (mu chain) secondary antibody. Lane 1: Monkey IgM. Lane 2: None. Load: 50 ng per lane. Primary antibody: None. Secondary antibody: Fluorescein goat secondary antibody at 1:1000 for 60 min at RT. Block: orb348637 for 30 min t RT. Predicted/Observed size: 72 kDa, 72 kDa for Monkey IgM. Other band(s): None.

## Biorbyt Ltd.

7 Signet Court, Swann Road  
Cambridge  
CB5 8LA  
United Kingdom

Email: [info@biorbyt.com](mailto:info@biorbyt.com), [support@biorbyt.com](mailto:support@biorbyt.com)  
Phone: +44 (0)1223 859353 | Fax: +1 (415) 651-8558

## Biorbyt LLC

68 TW Alexander Drive  
Research Triangle Park  
Durham  
NC 27713  
United States

Email: [info@biorbyt.com](mailto:info@biorbyt.com), [support@biorbyt.com](mailto:support@biorbyt.com)  
Phone: +1 (415) 906-5211 | Fax: +1 (415) 651-8558