

Product Datasheet

Monkey IgM (mu chain) Antibody (orb348010)

Catalog Number	orb348010
Category	Antibodies
Description	Monkey IgM (mu chain) antibody
Clonality	Polyclonal
Species/Host	Goat
Isotype	IgG
Conjugation	Unconjugated
Reactivity	Monkey
Form/Appearance	Liquid (sterile filtered)
Concentration	1.05 mg/mL
Buffer/Preservatives	Preservative: 0.01% (w/v) Sodium Azide; Buffer: 0.02 M Potassium Phosphate, 0.15 M Sodium Chloride, pH 7.2
Purity	This product was prepared from monospecific antiserum by immunoaffinity chromatography using Monkey IgM coupled to agarose beads followed by solid phase adsorption(s) to remove any unwanted reactivities. Assay by immunoelectrophoresis resulted in a single precipitin arc against anti-Goat Serum, Monkey IgM and Monkey Serum. No reaction was observed against other monkey heavy or light chain proteins.
Immunogen	Monkey IgM whole molecule
Tested applications	DOT, ELISA, IHC, WB
Dilution range	ELISA: 1:16,700 - 1:17,700, IHC: 1:500 - 1:2,500, WB: 1:1,000 - 1:5,000

Biorbyt Ltd.

7 Signet Court, Swann Road
Cambridge
CB5 8LA
United Kingdom

Email: info@biorbyt.com, support@biorbyt.com
Phone: [+44 \(0\)1223 859353](tel:+44(0)1223859353) | Fax: [+1 \(415\) 651-8558](tel:+1(415)651-8558)

Biorbyt LLC

68 TW Alexander Drive
Research Triangle Park
Durham
NC 27713
United States

Email: info@biorbyt.com, support@biorbyt.com
Phone: [+1 \(415\) 906-5211](tel:+1(415)906-5211) | Fax: [+1 \(415\) 651-8558](tel:+1(415)651-8558)

Application notes

Anti-Monkey IgM (mu chain) has been tested by ELISA, SDS-PAGE, dot blot, and western blot and is suitable for use in immunoelectrophoresis, western-blot, competitive western-blot, ELISA and competitive ELISA assays. Specific conditions for reactivity and signal detection should be optimized by the end user.

Antibody Type

Secondary Antibody

Storage

Store vial at 4° C prior to opening. This product is stable for several weeks at 4° C as an undiluted liquid. Dilute only prior to immediate use. For extended storage aliquot contents and freeze at -20° C or below. Avoid cycles of freezing and thawing.

Note

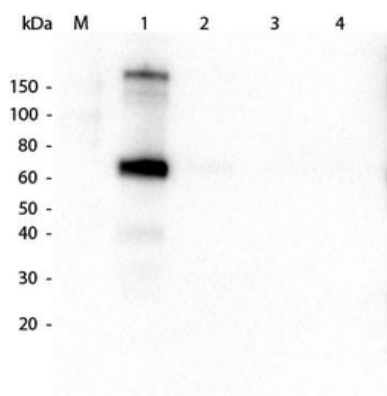
For research use only

Expiration Date

12 months from date of receipt.

Product	Gt-a-Monkey IgG	Gt-a-Monkey IgA	Gt-a-Monkey IgM
Rhesus Serum	+	+	+
Baboon Serum	+	+	+
Cynomologus Serum	+	+	+
Rhesus IgG	+		
Human IgA		+	
Human IgM			+

This table displays additional reactivity among various species of serum and immunoglobulin. A (+) indicates antibody reactivity to the corresponding target.



Western Blot of Goat anti-Monkey IgM (mu chain) antibody. Lane 1: Monkey IgM (p/n orb346440). Lane 2: Monkey IgG (p/n orb2652733). Lane 3: Monkey IgG (A and M Free). Lane 4: Monkey IgG F(c). Load: 50 ng per lane. Primary antibody: Goat anti-Monkey IgM (mu chain) antibody at 1:1000 for 1 hour at RT. Secondary antibody: Peroxidase conjugated Dk-a-Gt IgG at 1:40000 for 30 min at RT. Block: orb348637 for 30 min at RT. Predicted/Observed size: 70 kDa, 70 kDa for Monkey IgM (mu chain).

Biorbyt Ltd.

7 Signet Court, Swann Road
Cambridge
CB5 8LA
United Kingdom

Email: info@biorbyt.com, support@biorbyt.com
Phone: +44 (0)1223 859353 | Fax: +1 (415) 651-8558

Biorbyt LLC

68 TW Alexander Drive
Research Triangle Park
Durham
NC 27713
United States

Email: info@biorbyt.com, support@biorbyt.com
Phone: +1 (415) 906-5211 | Fax: +1 (415) 651-8558