

Product Datasheet

Sheep IgG (H&L) Antibody Pre-adsorbed (orb347951)

Catalog Number	orb347951
Description	Sheep IgG (H&L) antibody
Species/Host	Donkey
Reactivity	Sheep
Conjugation	Unconjugated
Tested Applications	ELISA, IHC, WB
Immunogen	Anti-Sheep IgG (H&L) was produced by repeated immunization with Sheep IgG whole molecule in donkey.
Preservatives	0.01% (w/v) Sodium Azide
Form/Appearance	Liquid (sterile filtered)
Concentration	1.0 mg/mL
Storage	Store vial at 4° C prior to opening. This product is stable for several weeks at 4° C as an undiluted liquid. Dilute only prior to immediate use. For extended storage aliquot contents and freeze at -20° C or below. Avoid cycles of freezing and thawing.
Note	For research use only
Application notes	Anti-Sheep IgG (H&L) has been tested by ELISA and is suitable for use in immunoelectrophoresis, western-blot, competitive western-blot, ELISA and competitive ELISA assays. Specific conditions for reactivity and signal detection should be optimized by the end user.
Isotype	IgG

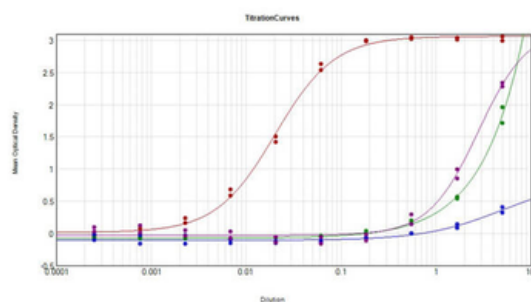
Biorbyt Ltd.

7 Signet Court, Swann's Road,
Cambridge, CB5 8LA, United Kingdom
Email: info@biorbyt.com, support@biorbyt.com
Phone: [+44 \(0\) 1223 859-353](tel:+44(0)1223859353) | Fax: [+1 \(415\) 651-8558](tel:+1(415)6518558)

Biorbyt LLC.

68 TW Alexander Drive,
Durham, NC, 27713, United States
Email: info@biorbyt.com, support@biorbyt.com
Phone: [+1 \(415\) 906-5211](tel:+1(415)9065211) | Fax: [+1 \(415\) 651-8558](tel:+1(415)6518558)

Clonality	Polyclonal
Antibody Type	Secondary Antibody
Purity	This product was prepared from monospecific antiserum by immunoaffinity chromatography using Sheep IgG coupled to agarose beads followed by solid phase adsorption(s) to remove any unwanted reactivities. Assay by immunoelectrophoresis resulted in a single precipitin arc against anti-Donkey Serum, Sheep IgG and Sheep Serum. No reaction was observed against Chicken, Guinea Pig, Hamster, Horse, Human, Mouse, Rabbit and Rat Serum Proteins.
Dilution Range	ELISA: 1:39,200 - 1:59,200, IHC: 1:1,000 - 1:5,000, WB: 1:2,000 - 1:10,000
Expiration Date	12 months from date of receipt.



ELISA Results of Donkey Anti-Sheep IgG Antibody (Min X Ch GP Ham Hs Hu Ms Rb Rt Serum Proteins) tested against purified Sheep IgG Mx8. Each well was coated in duplicate with 1.0 µg of Sheep IgG (p/n orb2652741) [Red Line], Chicken IgG (p/n orb2652774) [Green Line], Guinea Pig IgG (p/n orb2652762) [Blue Line], Hamster IgG (p/n orb2652759) [Purple Line], Horse IgG (p/n orb2652757), Human IgG (p/n orb346219), Mouse IgG (p/n orb2652749), Rabbit IgG (p/n orb2652747), and Rat IgG (p/n orb2652744). The working dilution of Sheep IgG MX8 is 1:49000. The starting dilution of antibody was 5 µg/ml and the X-axis represents the Log10 of a 3-fold dilution. This titration is a 4-parameter curve fit where the IC50 is defined as the titer of the antibody. Assay performed using HRP Conjugate Stabilizer, Goat Anti-Donkey IgG HRP conjugated (p/n orb348001), and TMB substrate (p/n orb348651).

Biorbyt Ltd.

7 Signet Court, Swann's Road,
Cambridge, CB5 8LA, United Kingdom
Email: info@biorbyt.com, support@biorbyt.com
Phone: [+44 \(0\) 1223 859-353](tel:+44101223859353) | Fax: [+1 \(415\) 651-8558](tel:+14156518558)

Biorbyt LLC.

68 TW Alexander Drive,
Durham, NC, 27713, United States
Email: info@biorbyt.com, support@biorbyt.com
Phone: [+1 \(415\) 906-5211](tel:+14159065211) | Fax: [+1 \(415\) 651-8558](tel:+14156518558)