

## Product Datasheet

### Sheep IgG (H&L) Secondary Antibody Biotin Conjugated Pre-Adsorbed (orb347940)

<b>Catalog Number</b>	orb347940
<b>Category</b>	Antibodies
<b>Description</b>	Sheep IgG (H&L) antibody (Biotin)
<b>Clonality</b>	Polyclonal
<b>Species/Host</b>	Rabbit
<b>Isotype</b>	IgG
<b>Conjugation</b>	Biotin
<b>Reactivity</b>	Sheep
<b>Form/Appearance</b>	Lyophilized
<b>Concentration</b>	1.0 mg/mL
<b>Buffer/Preservatives</b>	0.01% (w/v) Sodium Azide
<b>Purity</b>	Secondary antibody was prepared from monospecific antiserum by immunoaffinity chromatography using Sheep IgG coupled to agarose beads followed by solid phase adsorption(s) to remove any unwanted reactivities. Assay by immunoelectrophoresis resulted in a single precipitin arc against anti-biotin, anti-Rabbit Serum, Sheep IgG and Sheep Serum. No reaction was observed against Human Serum Proteins.
<b>Immunogen</b>	Sheep IgG whole molecule
<b>Tested applications</b>	DOT, ELISA, IHC, WB

#### Biorbyt Ltd.

7 Signet Court, Swann Road  
Cambridge  
CB5 8LA  
United Kingdom

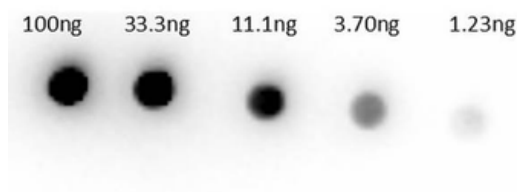
Email: [info@biorbyt.com](mailto:info@biorbyt.com), [support@biorbyt.com](mailto:support@biorbyt.com)  
Phone: +44 (0)1223 859353 | Fax: +1 (415) 651-8558

#### Biorbyt LLC

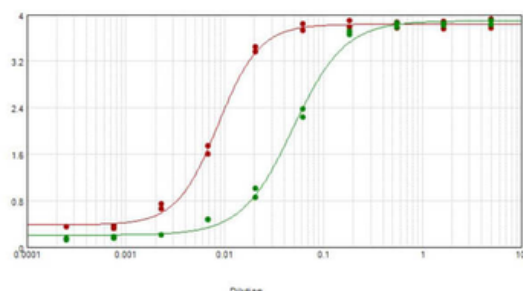
68 TW Alexander Drive  
Research Triangle Park  
Durham  
NC 27713  
United States

Email: [info@biorbyt.com](mailto:info@biorbyt.com), [support@biorbyt.com](mailto:support@biorbyt.com)  
Phone: +1 (415) 906-5211 | Fax: +1 (415) 651-8558

<b>Dilution range</b>	ELISA: 1:20,000 - 1:100,000, IHC: 1:1,000 - 1:5,000, WB: 1:2,000 - 1:10,000
<b>Application notes</b>	Anti-Sheep IgG Biotin Conjugated Antibody has been tested by ELISA and Dot Blot and is suitable for western blot, ELISA and immunohistochemistry as well as other antibody based assays requiring lot-to-lot consistency.
<b>Antibody Type</b>	Secondary Antibody
<b>Storage</b>	Store secondary antibody at 4° C prior to restoration. For extended storage aliquot contents and freeze at -20° C or below. Avoid cycles of freezing and thawing. Centrifuge product if not completely clear after standing at room temperature. This product is stable for several weeks at 4° C as an undiluted liquid. Dilute only prior to immediate use.
<b>Note</b>	For research use only



Dot Bot of Rabbit Anti-Sheep IgG Biotin Conjugated Antibody Min X human serums. Lane 1: 100 ng. Lane 2: 33.3 ng. Lane 3: 11.1 ng. Lane 4: 3.7 ng. Lane 5: 1.23 ng. Primary Antibody: Rb-anti-sheep Biotin at 1 µg/ml. Secondary Antibody: Streptavidin HRP orb348767 at 1:40000. Blocking Buffer: BlockOut orb348644 for 30 min at RT.



ELISA results of purified Rabbit anti-Sheep IgG biotin conjugated antibody Min X human serum tested against purified Sheep IgG. Each well was coated in duplicate with 1.0 µg of sheep IgG (red line). The starting dilution of antibody was 5 µg/ml and the X-axis represents the Log10 of a 3-fold dilution. This titration is a 4-parameter curve fit where the IC50 is defined as the titer of the antibody.

#### **Biorbyt Ltd.**

7 Signet Court, Swann Road  
Cambridge  
CB5 8LA  
United Kingdom

Email: [info@biorbyt.com](mailto:info@biorbyt.com), [support@biorbyt.com](mailto:support@biorbyt.com)  
Phone: +44 (0)1223 859353 | Fax: +1 (415) 651-8558

#### **Biorbyt LLC**

68 TW Alexander Drive  
Research Triangle Park  
Durham  
NC 27713  
United States

Email: [info@biorbyt.com](mailto:info@biorbyt.com), [support@biorbyt.com](mailto:support@biorbyt.com)  
Phone: +1 (415) 906-5211 | Fax: +1 (415) 651-8558