

Product Datasheet

Sheep IgG (H&L) Secondary Antibody Biotin Conjugated Pre-Adsorbed (orb347939)

Description	Sheep IgG (H&L) antibody (Biotin)
Species/Host	Rabbit
Reactivity	Sheep
Conjugation	Biotin
Tested Applications	DOT, ELISA, IHC, WB
Immunogen	Sheep IgG whole molecule
Preservatives	0.01% (w/v) Sodium Azide
Form/Appearance	Lyophilized
Concentration	1.0 mg/mL
Storage	Store secondary antibody at 4° C prior to restoration. For extended storage aliquot antibody and freeze at -20° C or below. Avoid cycles of freezing and thawing. Centrifuge product if not completely clear after standing at room temperature. This product is stable for several weeks at 4° C as an undiluted liquid. Dilute only prior to immediate use.
Note	For research use only
Application notes	Anti-Sheep IgG Biotin Conjugated Antibody has been tested by ELISA and Dot Blot and is suitable for western blot, ELISA and immunohistochemistry as well as other antibody based assays requiring lot-to-lot consistency.
Isotype	IgG
Clonality	Polyclonal
Antibody Type	Secondary Antibody

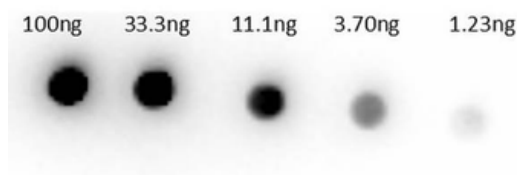
Biorbyt Ltd.

7 Signet Court, Swann's Road,
Cambridge, CB5 8LA, United Kingdom
Email: info@biorbyt.com, support@biorbyt.com
Phone: [+44 \(0\) 1223 859-353](tel:+44(0)1223859353) | Fax: [+1 \(415\) 651-8558](tel:+1(415)6518558)

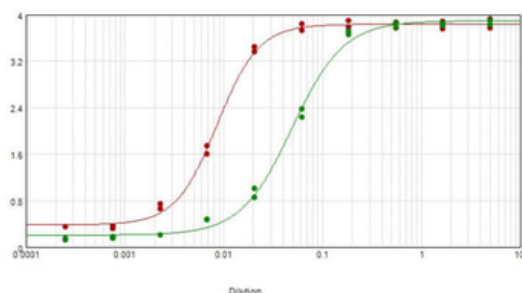
Biorbyt LLC.

68 TW Alexander Drive,
Durham, NC, 27713, United States
Email: info@biorbyt.com, support@biorbyt.com
Phone: [+1 \(415\) 906-5211](tel:+1(415)9065211) | Fax: [+1 \(415\) 651-8558](tel:+1(415)6518558)

Purity	Secondary antibody was prepared from monospecific antiserum by immunoaffinity chromatography using Sheep IgG coupled to agarose beads followed by solid phase adsorption(s) to remove any unwanted reactivities. Assay by immunoelectrophoresis resulted in a single precipitin arc against anti-biotin, anti-Rabbit Serum, Sheep IgG and Sheep Serum. No reaction was observed against Human Serum Proteins.
Dilution Range	ELISA: 1:20,000 - 1:100,000, IHC: 1:1,000 - 1:5,000, WB: 1:2,000 - 1:10,000
Expiration Date	12 months from date of receipt.



Dot Bot of Rabbit Anti-Sheep IgG Biotin Conjugated Antibody Min X human serums. Lane 1: 100 ng. Lane 2: 33.3 ng. Lane 3: 11.1 ng. Lane 4: 3.7 ng. Lane 5: 1.23 ng. Primary Antibody: Rb-anti-sheep Biotin at 1 µg/ml. Secondary Antibody: Streptavidin HRP orb348767 at 1:40000. Blocking Buffer: BlockOut orb348644 for 30 min at RT.



ELISA results of purified Rabbit anti-Sheep IgG biotin conjugated antibody Min X human serum tested against purified Sheep IgG. Each well was coated in duplicate with 1.0 µg of sheep IgG (red line). The starting dilution of antibody was 5 µg/ml and the X-axis represents the Log10 of a 3-fold dilution. This titration is a 4-parameter curve fit where the IC50 is defined as the titer of the antibody.

Biorbyt Ltd.

7 Signet Court, Swann's Road,
Cambridge, CB5 8LA, United Kingdom
Email: info@biorbyt.com, support@biorbyt.com
Phone: [+44 \(0\) 1223 859-353](tel:+44201223859353) | Fax: [+1 \(415\) 651-8558](tel:+14156518558)

Biorbyt LLC.

68 TW Alexander Drive,
Durham, NC, 27713, United States
Email: info@biorbyt.com, support@biorbyt.com
Phone: [+1 \(415\) 906-5211](tel:+14159065211) | Fax: [+1 \(415\) 651-8558](tel:+14156518558)