

Product Datasheet

Sheep IgG (H&L) Antibody Peroxidase Conjugated (orb347924)

Catalog Number	orb347924
Category	Antibodies
Description	Sheep IgG (H&L) antibody (Peroxidase)
Clonality	Polyclonal
Species/Host	Rabbit
Isotype	IgG
Conjugation	HRP
Reactivity	Sheep
Form/Appearance	Lyophilized
Concentration	2.0 mg/mL
Buffer/Preservatives	0.01% (w/v) Gentamicin Sulfate. Do NOT add Sodium Azide!
Purity	This product was prepared from monospecific antiserum by immunoaffinity chromatography using Sheep IgG coupled to agarose beads followed by solid phase adsorption(s) to remove any unwanted reactivities. Assay by immunoelectrophoresis resulted in a single precipitin arc against anti-Peroxidase, anti-Rabbit Serum, Sheep IgG and Sheep Serum.
Immunogen	Anti-Sheep IgG (H&L) was produced by repeated immunization with Sheep IgG whole molecule in rabbit.
Tested applications	ELISA, IHC, WB

Biorbyt Ltd.

7 Signet Court, Swann Road
Cambridge
CB5 8LA
United Kingdom

Email: info@biorbyt.com, support@biorbyt.com
Phone: [+44 \(0\)1223 859353](tel:+44(0)1223859353) | Fax: [+1 \(415\) 651-8558](tel:+1(415)651-8558)

Biorbyt LLC

68 TW Alexander Drive
Research Triangle Park
Durham
NC 27713
United States

Email: info@biorbyt.com, support@biorbyt.com
Phone: [+1 \(415\) 906-5211](tel:+1(415)906-5211) | Fax: [+1 \(415\) 651-8558](tel:+1(415)651-8558)

Dilution range

ELISA: 1:40,000 - 1:80,000, IHC: 1:500 - 1:2,500, WB: 1:1,000 - 1:5,000

Application notes

Anti-Sheep IgG Peroxidase Conjugated Antibody has been tested by ELISA and western blot and is suitable for use in immunoelectrophoresis, western-blot, competitive western-blot, ELISA and competitive ELISA assays. Specific conditions for reactivity and signal detection should be optimized by the end user.

Antibody Type

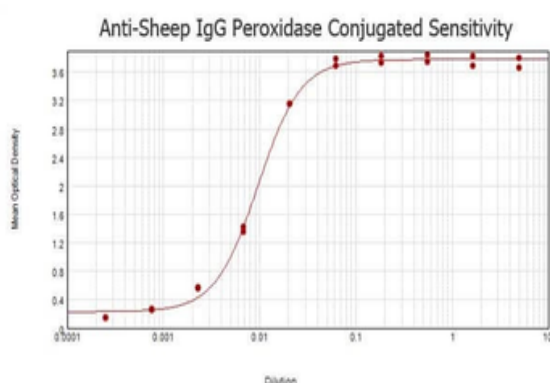
Secondary Antibody

Storage

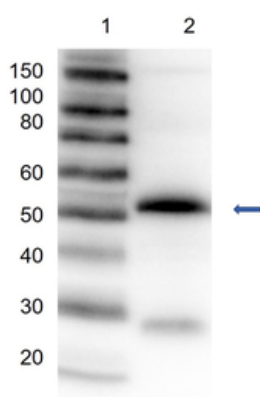
Store vial at 4° C prior to restoration. For extended storage aliquot contents and freeze at -20° C or below. Avoid cycles of freezing and thawing. Centrifuge product if not completely clear after standing at room temperature. This product is stable for several weeks at 4° C as an undiluted liquid. Dilute only prior to immediate use.

Note

For research use only



ELISA results of purified Rabbit anti-Sheep IgG Antibody Peroxidase Conjugated tested against purified Sheep IgG. Each well was coated in duplicate with 1.0 µg of Sheep IgG (p/n orb346367). The starting dilution of antibody was 5 µg/ml and the X-axis represents the Log10 of a 3-fold dilution. This titration is a 4-parameter curve fit where the IC50 is defined as the titer of the antibody. Assay performed using 3% fish gelatin as blocking buffer and TMB substrate p/n orb348651.



Western Blot of Rabbit Anti-Sheep IgG Peroxidase Conjugated Antibody. Lane 1: Super Signal Molecular Weight. Lane 2: Sheep IgG (p/n orb2652741). Detection: Rabbit Anti-Sheep IgG Peroxidase Conjugated Antibody at 1:1000 overnight at 2-8°C. Block: Blocking Buffer for Fluorescent Western Blotting (p/n orb348637) for 30 mins at RT.

Biorbyt Ltd.

7 Signet Court, Swann Road
Cambridge
CB5 8LA
United Kingdom

Email: info@biorbyt.com, support@biorbyt.com
Phone: +44 (0)1223 859353 | Fax: +1 (415) 651-8558

Biorbyt LLC

68 TW Alexander Drive
Research Triangle Park
Durham
NC 27713
United States

Email: info@biorbyt.com, support@biorbyt.com
Phone: +1 (415) 906-5211 | Fax: +1 (415) 651-8558