

## Product Datasheet

### Sheep IgG (H&L) Secondary Antibody Fluorescein Conjugated Pre-Adsorbed (orb347921)

<b>Catalog Number</b>	orb347921
<b>Category</b>	Antibodies
<b>Description</b>	Sheep IgG (H&L) antibody (FITC)
<b>Clonality</b>	Polyclonal
<b>Species/Host</b>	Rabbit
<b>Isotype</b>	IgG
<b>Conjugation</b>	FITC
<b>Reactivity</b>	Sheep
<b>Form/Appearance</b>	Lyophilized
<b>Concentration</b>	1.0 mg/mL
<b>Buffer/Preservatives</b>	Preservative: 0.01% (w/v) Sodium Azide. Stabilizer: 10 mg/mL Bovine Serum Albumin (rAlbumin) - Immunoglobulin and Protease free; Buffer: 0.02 M Potassium Phosphate, 0.15 M Sodium Chloride, pH 7.2
<b>Purity</b>	Sheep IgG (H&L) Secondary Antibody Fluorescein Conjugated Pre-Adsorbed was prepared from monospecific antiserum by immunoaffinity chromatography using Sheep IgG coupled to agarose beads followed by solid phase adsorption(s) to remove any unwanted reactivities. Assay by immunoelectrophoresis resulted in a single precipitin arc against anti-Fluorescein, anti-Rabbit Serum, Sheep IgG and Sheep Serum. No reaction was observed against Human Serum Proteins.
<b>Immunogen</b>	Sheep IgG whole molecule

#### Biorbyt Ltd.

7 Signet Court, Swann Road  
Cambridge  
CB5 8LA  
United Kingdom

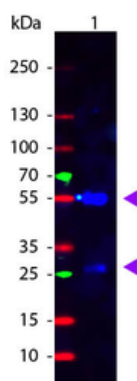
Email: [info@biorbyt.com](mailto:info@biorbyt.com), [support@biorbyt.com](mailto:support@biorbyt.com)  
Phone: +44 (0)1223 859353 | Fax: +1 (415) 651-8558

#### Biorbyt LLC

68 TW Alexander Drive  
Research Triangle Park  
Durham  
NC 27713  
United States

Email: [info@biorbyt.com](mailto:info@biorbyt.com), [support@biorbyt.com](mailto:support@biorbyt.com)  
Phone: +1 (415) 906-5211 | Fax: +1 (415) 651-8558

<b>Tested applications</b>	FC, FLISA, IF, WB
<b>Dilution range</b>	FLISA: 1:10,000 - 1:50,000, FC: 1:500 - 1:2,500, IF: 1:1,000 - 1:5,000
<b>Application notes</b>	Anti-Sheep IgG Fluorescein Conjugated Antibody has been tested by western blot and is designed for immunofluorescence microscopy, fluorescence based plate assays (FLISA) and fluorescent western blotting. This product is also suitable for multiplex analysis, including multicolor imaging, utilizing various commercial platforms.
<b>Antibody Type</b>	Secondary Antibody
<b>Storage</b>	Store Secondary Antibody at 4° C prior to restoration. For extended storage aliquot antibody and freeze at -20° C or below. Avoid cycles of freezing and thawing. Centrifuge product if not completely clear after standing at room temperature. This product is stable for several weeks at 4° C as an undiluted liquid. Dilute only prior to immediate use.
<b>Note</b>	For research use only



Western Blot of Rabbit anti-Sheep IgG Fluorescein Conjugated Antibody. Lane 1: Sheep IgG. Lane 2: None. Load: 50 ng per lane. Primary antibody: None. Secondary antibody: Fluorescein rabbit secondary antibody at 1:1000 for 60 min at RT. Block: orb348637 for 30 min at RT. Predicted/Observed size: 28 & 55 kDa, 28 & 55 kDa for Sheep IgG. Other band(s): None.

#### Biorbyt Ltd.

7 Signet Court, Swann Road  
Cambridge  
CB5 8LA  
United Kingdom

Email: [info@biorbyt.com](mailto:info@biorbyt.com), [support@biorbyt.com](mailto:support@biorbyt.com)  
Phone: +44 (0)1223 859353 | Fax: +1 (415) 651-8558

#### Biorbyt LLC

68 TW Alexander Drive  
Research Triangle Park  
Durham  
NC 27713  
United States

Email: [info@biorbyt.com](mailto:info@biorbyt.com), [support@biorbyt.com](mailto:support@biorbyt.com)  
Phone: +1 (415) 906-5211 | Fax: +1 (415) 651-8558