

Product Datasheet

Rabbit IgG (H&L) Antibody Peroxidase Conjugated Pre-Adsorbed (orb347740)

Catalog Number	orb347740
Category	Antibodies
Description	RABBIT IgG (H&L) antibody (Peroxidase)
Clonality	Polyclonal
Species/Host	Sheep
Isotype	IgG
Conjugation	HRP
Reactivity	Rabbit
Form/Appearance	Lyophilized
Concentration	1.0 mg/mL
Buffer/Preservatives	Preservative: 0.01% (w/v) Gentamicin Sulfate. Do NOT add Sodium Azide!. Stabilizer: 10 mg/mL Bovine Serum Albumin (rAlbumin) - Immunoglobulin and Protease free; Buffer: 0.02 M Potassium Phosphate, 0.15 M Sodium Chloride, pH 7.2
Purity	This product was prepared from monospecific antiserum by immunoaffinity chromatography using Rabbit IgG coupled to agarose beads followed by solid phase adsorption(s) to remove any unwanted reactivities. Assay by immunoelectrophoresis resulted in a single precipitin arc against anti-Peroxidase, anti-Sheep Serum, Rabbit IgG and Rabbit Serum. No reaction was observed against or Bovine, Chicken, Goat, Guinea Pig, Horse, Human, Mouse, Rat and Sheep Serum Proteins.

Biorbyt Ltd.

7 Signet Court, Swann Road
Cambridge
CB5 8LA
United Kingdom

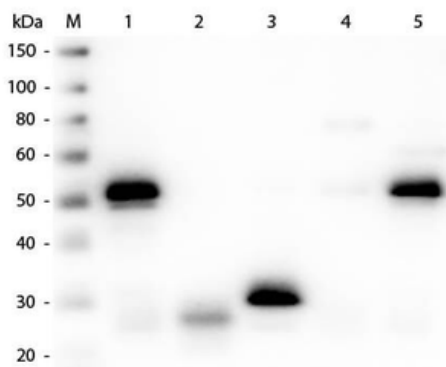
Email: info@biorbyt.com, support@biorbyt.com
Phone: [+44 \(0\)1223 859353](tel:+44(0)1223859353) | Fax: [+1 \(415\) 651-8558](tel:+1(415)651-8558)

Biorbyt LLC

68 TW Alexander Drive
Research Triangle Park
Durham
NC 27713-2847
United States

Email: info@biorbyt.com, support@biorbyt.com
Phone: [+1 \(415\) 906-5211](tel:+1(415)906-5211) | Fax: [+1 \(415\) 651-8558](tel:+1(415)651-8558)

Immunogen	Rabbit IgG whole molecule
Tested applications	ELISA, IHC, WB
Dilution range	ELISA: 1:10,000 - 1:50,000, IHC: 1:500 - 1:2,500, WB: 1:1,000 - 1:10,000
Application notes	Anti-Rabbit IgG Peroxidase Conjugated Antibody has been tested by ELISA and is assayed against 1.0 µg of Rabbit IgG in a standard capture ELISA using ABTS (2,2'-azino-bis-[3-ethylbenthiazoline-6-sulfonic acid]) as a substrate for 30 minutes at room temperature. A working dilution of 1:8,000 to 1:40,000 of the reconstitution concentration is suggested for this product.
Antibody Type	Secondary Antibody
Storage	Store vial at 4° C prior to restoration. For extended storage aliquot contents and freeze at -20° C or below. Avoid cycles of freezing and thawing. Centrifuge product if not completely clear after standing at room temperature. This product is stable for several weeks at 4° C as an undiluted liquid. Dilute only prior to immediate use.
Note	For research use only
Expiration Date	12 months from date of receipt.



Western Blot of Anti-Rabbit IgG (H&L) (SHEEP) Antibody (Min X Hu, Gt, Ms Serum Proteins) (p/n orb347744). Lane M: 3 µl Molecular Ladder. Lane 1: Rabbit IgG whole molecule (p/n orb2652747). Lane 2: Rabbit IgG F(ab) Fragment (p/n orb2652745). Lane 3: Rabbit IgG F(c) Fragment (p/n orb346280). Lane 4: Rabbit IgM Whole Molecule (p/n orb346313). Lane 5: Normal Rabbit Serum. All samples were reduced. Load: 50 ng per lane. Block: orb348637 for 30 min at RT. Primary Antibody: Anti-Rabbit IgG (H&L) (SHEEP) Antibody (Min X Hu, Gt, Ms Serum Proteins) (p/n orb347744) 1:3000 for 60 min at RT. Secondary antibody: Anti-Sheep IgG (DONKEY) Peroxidase Conjugated Antibody (p/n orb347953) 1:40000 in orb348637 for 30 min at RT. Predicted/Observed Size: 25 and 50 kDa for Rabbit IgG and Serum, 25 kDa for F(c) and F(ab), 70 and 23 kDa for IgM. Rabbit F(c) migrates slightly higher.

Biorbyt Ltd.

7 Signet Court, Swann Road
Cambridge
CB5 8LA
United Kingdom

Email: info@biorbyt.com, support@biorbyt.com
Phone: [+44 \(0\)1223 859353](tel:+44(0)1223859353) | Fax: [+1 \(415\) 651-8558](tel:+1(415)651-8558)

Biorbyt LLC

68 TW Alexander Drive
Research Triangle Park
Durham
NC 27713-2847
United States

Email: info@biorbyt.com, support@biorbyt.com
Phone: [+1 \(415\) 906-5211](tel:+1(415)906-5211) | Fax: [+1 \(415\) 651-8558](tel:+1(415)651-8558)