

Product Datasheet

Rabbit IgG (H&L) Secondary Antibody Fluorescein Conjugated (orb347667)

Catalog Number	orb347667
Category	Antibodies
Description	Rabbit IgG (H&L) antibody (FITC)
Clonality	Polyclonal
Species/Host	Goat
Isotype	IgG
Conjugation	FITC
Reactivity	Rabbit
Form/Appearance	Lyophilized
Concentration	1.0 mg/mL
Buffer/Preservatives	0.01% (w/v) Sodium Azide
Purity	This product was prepared from monospecific antiserum by immunoaffinity chromatography using Rabbit IgG coupled to agarose beads followed by solid phase adsorption(s) to remove any unwanted reactivities. Assay by immunoelectrophoresis resulted in a single precipitin arc against anti-Fluorescein, anti-Goat Serum, Rabbit IgG and Rabbit Serum.
Immunogen	Rabbit IgG whole molecule
Tested applications	DOT, FC, FLISA, IF, WB
Dilution range	FLISA: 1:10,000 - 1:50,000, FC: 1:500 - 1:2,500, IF: 1:1,000 - 1:5,000

Biorbyt Ltd.

7 Signet Court, Swann Road
Cambridge
CB5 8LA
United Kingdom

Email: info@biorbyt.com, support@biorbyt.com
Phone: [+44 \(0\)1223 859353](tel:+44(0)1223859353) | Fax: [+1 \(415\) 651-8558](tel:+1(415)651-8558)

Biorbyt LLC

68 TW Alexander Drive
Research Triangle Park
Durham
NC 27713
United States

Email: info@biorbyt.com, support@biorbyt.com
Phone: [+1 \(415\) 906-5211](tel:+1(415)906-5211) | Fax: [+1 \(415\) 651-8558](tel:+1(415)651-8558)

Application notes

Anti-Rabbit IgG Antibody Fluorescein has been tested by dot blot and western blot and is designed for immunofluorescence microscopy, fluorescence based plate assays (FLISA) and fluorescent western blotting. This product is also suitable for multiplex analysis, including multicolor imaging, utilizing various commercial platforms.

Antibody Type

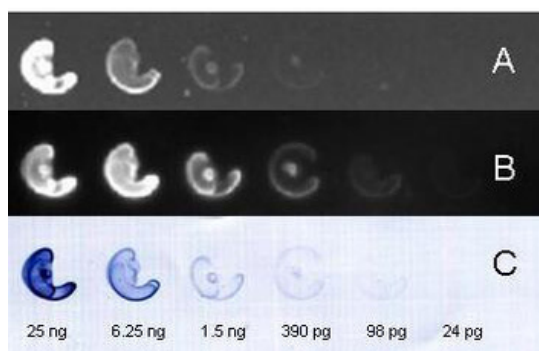
Secondary Antibody

Storage

Store vial at 4° C prior to restoration. For extended storage aliquot contents and freeze at -20° C or below. Avoid cycles of freezing and thawing. Centrifuge product if not completely clear after standing at room temperature. This product is stable for several weeks at 4° C as an undiluted liquid. Dilute only prior to immediate use.

Note

For research use only



Biorbyt FITC (fluorescein) and HRP (horse radish peroxidase) conjugated secondary antibody was used to detect nanogram – picogram levels of rabbit IgG by dot blot on nitrocellulose membrane. 4 ul each of serial 1 in 4 dilutions of rabbit IgG were dotted on nitrocellulose and allowed to dry. Membrane was blocked in 3% BSA for 10 minutes dried for later use and rewetted with orb348637. Blot was incubated in Biorbyt fluorescein conjugated goat anti rabbit orb347666 1:10000 and Biorbyt HRP conjugated goat anti Rabbit orb347673 1:10000, dried and: A. Blot was imaged on the BioRad VersaDoc with filter settings appropriate for Fluorescein/DyLight 488. B. Blot was rewetted with TBS, incubated with FEMTOMAX chemiluminescent substrate for 1-3 minutes and imaged for 60sec on the BioRad VersaDoc Imaging System. C. Blot was rinsed with TBS and DIH₂O, incubated for 5 minutes with Biorbyt TMB Substrate for Western Blot MaxTag (1 ml of TMBM-102 + ~9 ml of orb342326), dried overnight.

Biorbyt Ltd.

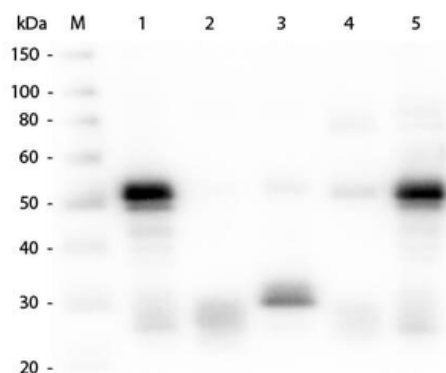
7 Signet Court, Swann Road
Cambridge
CB5 8LA
United Kingdom

Email: info@biorbyt.com, support@biorbyt.com
Phone: +44 (0)1223 859353 | Fax: +1 (415) 651-8558

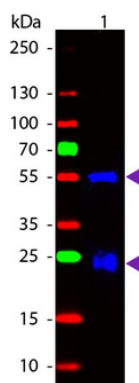
Biorbyt LLC

68 TW Alexander Drive
Research Triangle Park
Durham
NC 27713
United States

Email: info@biorbyt.com, support@biorbyt.com
Phone: +1 (415) 906-5211 | Fax: +1 (415) 651-8558



Western Blot of Anti-Rabbit IgG (H&L) (GOAT) Antibody (p/n orb347660). Lane M: 3 μ l Molecular Ladder. Lane 1: Rabbit IgG whole molecule (p/n orb2652747). Lane 2: Rabbit IgG F(ab) Fragment (p/n orb2652745). Lane 3: Rabbit IgG F(c) Fragment (p/n orb346280). Lane 4: Rabbit IgM Whole Molecule (p/n orb346313). Lane 5: Normal Rabbit Serum. All samples were reduced. Load: 50 ng per lane. Block: orb348637 for 30 min at RT. Primary Antibody: Anti-Rabbit IgG (H&L) (GOAT) Antibody (p/n orb347660) 1:1000 for 60 min at RT. Secondary antibody: Anti-Goat IgG (DONKEY) Peroxidase Conjugated Antibody 1:40000 in orb348637 for 30 min at RT. Predicted/Observed Size: 25 and 50 kDa for Rabbit IgG and Serum, 25 kDa for F(c) and F(ab), 70 and 23 kDa for IgM. Rabbit F(c) migrates slightly higher.



Western blot of Fluorescein conjugated Goat Anti-Rabbit IgG secondary antibody. Lane 1: Rabbit IgG. Load: 50 ng per lane. Primary antibody: None. Secondary antibody: Fluorescein goat secondary antibody at 1:1000 for 60 min at RT. Blocking: orb348637 for 30 min at RT. Predicted/Observed size: 25 & 55 kDa, 25 & 55 kDa for Rabbit IgG. Other band(s): None.

Biorbyt Ltd.

7 Signet Court, Swann Road
Cambridge
CB5 8LA
United Kingdom

Email: info@biorbyt.com, support@biorbyt.com
Phone: [+44 \(0\)1223 859353](tel:+44(0)1223859353) | Fax: [+1 \(415\) 651-8558](tel:+1(415)651-8558)

Biorbyt LLC

68 TW Alexander Drive
Research Triangle Park
Durham
NC 27713
United States

Email: info@biorbyt.com, support@biorbyt.com
Phone: [+1 \(415\) 906-5211](tel:+1(415)906-5211) | Fax: [+1 \(415\) 651-8558](tel:+1(415)651-8558)