

Product Datasheet

Mouse IgG (H&L) Antibody Biotin Conjugated Pre-Adsorbed (orb347596)

Catalog Number	orb347596
Category	Antibodies
Description	Mouse IgG (H&L) antibody (Biotin)
Clonality	Polyclonal
Species/Host	Rabbit
Isotype	IgG
Conjugation	Biotin
Reactivity	Mouse
Form/Appearance	Lyophilized
Concentration	2.0 mg/mL
Buffer/Preservatives	0.01% (w/v) Sodium Azide
Purity	This product was prepared from monospecific antiserum by immunoaffinity chromatography using Mouse IgG coupled to agarose beads followed by solid phase adsorption(s) to remove any unwanted reactivities. Assay by immunoelectrophoresis resulted in a single precipitin arc against anti-biotin, anti-Rabbit Serum, Mouse IgG and Mouse Serum. No reaction was observed against Human Serum Proteins.
Immunogen	Mouse IgG whole molecule
Tested applications	ELISA, IHC, WB

Biorbyt Ltd.

7 Signet Court, Swann Road
Cambridge
CB5 8LA
United Kingdom

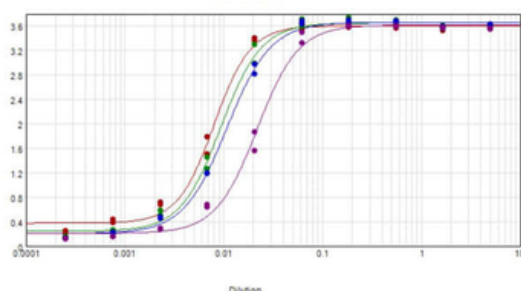
Email: info@biorbyt.com, support@biorbyt.com
Phone: +44 (0)1223 859353 | Fax: +1 (415) 651-8558

Biorbyt LLC

68 TW Alexander Drive
Research Triangle Park
Durham
NC 27713
United States

Email: info@biorbyt.com, support@biorbyt.com
Phone: +1 (415) 906-5211 | Fax: +1 (415) 651-8558

Dilution range	ELISA: 1:20,000 - 1:100,000, IHC: 1:1,000 - 1:5,000, WB: 1:2,000 - 1:10,000
Application notes	Anti-Mouse IgG Biotin Antibody has been tested by ELISA and is assayed against 1.0 ug of Mouse IgG in a standard capture ELISA using Peroxidase Conjugated Streptavidin #S000-03 and ABTS (2,2'-azino-bis-[3-ethylbenthiiazoline-6-sulfonic acid]) as a substrate for 30 minutes at room temperature. A working dilution of 1:20,000 to 1:80,000 of the reconstitution concentration is suggested for this product.
Antibody Type	Secondary Antibody
Storage	Store vial at 4° C prior to restoration. For extended storage aliquot contents and freeze at -20° C or below. Avoid cycles of freezing and thawing. Centrifuge product if not completely clear after standing at room temperature. This product is stable for several weeks at 4° C as an undiluted liquid. Dilute only prior to immediate use.
Note	For research use only



ELISA results of purified Rabbit Anti-Mouse IgG Biotin Conjugated Antibody Min X human serum tested against purified Mouse IgG. Each well was coated in duplicate with 1.0 µg of Mouse IgG (blue line). The starting dilution of antibody was 5 µg/ml and the X-axis represents the Log10 of a 3-fold dilution. This titration is a 4-parameter curve fit where the IC50 is defined as the titer of the antibody.

Biorbyt Ltd.

7 Signet Court, Swann Road
Cambridge
CB5 8LA
United Kingdom

Email: info@biorbyt.com, support@biorbyt.com
Phone: [+44 \(0\)1223 859353](tel:+44(0)1223859353) | Fax: [+1 \(415\) 651-8558](tel:+1(415)651-8558)

Biorbyt LLC

68 TW Alexander Drive
Research Triangle Park
Durham
NC 27713
United States

Email: info@biorbyt.com, support@biorbyt.com
Phone: [+1 \(415\) 906-5211](tel:+1(415)906-5211) | Fax: [+1 \(415\) 651-8558](tel:+1(415)651-8558)