

Product Datasheet

Human IgG (H&L) Antibody Peroxidase Conjugated Pre-Adsorbed (orb347231)

Catalog Number	orb347231
Category	Antibodies
Description	Human IgG (H&L) antibody (Peroxidase)
Clonality	Polyclonal
Species/Host	Goat
Isotype	IgG
Conjugation	HRP
Reactivity	Human
Form/Appearance	Lyophilized
Concentration	2.0 mg/mL
Buffer/Preservatives	0.01% (w/v) Gentamicin Sulfate. Do NOT add Sodium Azide!
Purity	Human IgG (H&L) Antibody Peroxidase Conjugated was prepared from monospecific antiserum by immunoaffinity chromatography using Human IgG coupled to agarose beads followed by solid phase adsorption(s) to remove any unwanted reactivities. Assay by immunoelectrophoresis resulted in a single precipitin arc against anti-Peroxidase, anti-Goat Serum, Human IgG and Human Serum. No reaction was observed against Mouse Serum Proteins.
Immunogen	Human IgG whole molecule
Tested applications	ELISA, IHC, WB

Biorbyt Ltd.

7 Signet Court, Swann Road
Cambridge
CB5 8LA
United Kingdom

Email: info@biorbyt.com, support@biorbyt.com
Phone: [+44 \(0\)1223 859353](tel:+44(0)1223859353) | Fax: [+1 \(415\) 651-8558](tel:+1(415)651-8558)

Biorbyt LLC

68 TW Alexander Drive
Research Triangle Park
Durham
NC 27713
United States

Email: info@biorbyt.com, support@biorbyt.com
Phone: [+1 \(415\) 906-5211](tel:+1(415)906-5211) | Fax: [+1 \(415\) 651-8558](tel:+1(415)651-8558)

Dilution range

ELISA: 1:250,000, IHC: 1:500 - 1:2,500, WB: 1:2,000 - 1:20,000

Application notes

Anti-Human IgG (H&L) Peroxidase Conjugate has been tested by ELISA and western blot and is suitable for immunoblotting (western or dot blot), ELISA, immunoperoxidase electron microscopy and immunohistochemistry as well as other peroxidase-antibody based enzymatic assays requiring lot-to-lot consistency.

Antibody Type

Secondary Antibody

Storage

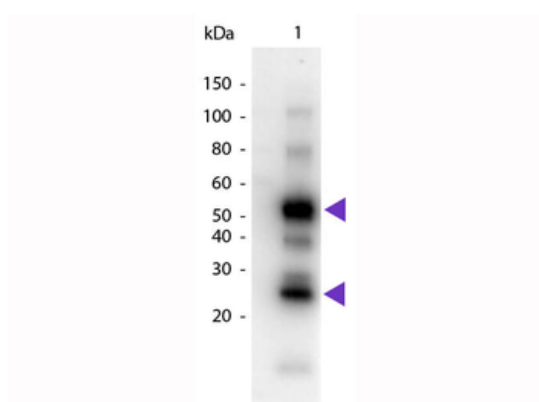
Store vial at 4° C prior to restoration. For extended storage aliquot contents and freeze at -20° C or below. Avoid cycles of freezing and thawing. Centrifuge product if not completely clear after standing at room temperature. This product is stable for several weeks at 4° C as an undiluted liquid. Dilute only prior to immediate use.

Note

For research use only

ELISA target and detector	NDO-LID		
	IgM	IgG	IgG/M (protein A)
Sensitivity	78.0 (73.0-83.0)	81.6 (77.0-86.1)	86.3 (82.2-90.3)
Specificity	97.0 (94.0-100)	95.6 (92.0-99.4)	93.6 (93.0-100)
PPV	98.3 (96.5-100)	97.6 (95.5-99.7)	98.1 (96.3-100)
NPV	66.7 (60.0-73.5)	70.2 (63.4-77.1)	76.1 (69.5-82.8)

Diagnostic accuracy of detecting IgG and IgG/M antibodies against natural octyl disaccharide-leprosy IDRI diagnostic (NDO-LID) using HRP anti-human IgG (p/n orb347230), HRP anti-human IgM (p/n orb347297), and HRP Protein A. ELISA = enzyme-linked immunosorbent assay; NPV = negative predictive value; PPV = positive predictive value. Results are shown as percent, with confidence intervals in parentheses.



Western Blot of Goat anti-Human IgG Pre-Adsorbed Peroxidase Conjugated Secondary Antibody. Lane 1: Human IgG. Lane 2: None. Load: 50 ng per lane. Primary antibody: None. Secondary antibody: Peroxidase goat secondary antibody at 1:1000 for 60 min at RT. Block: orb348637 for 30 min at RT. Predicted/Observed size: 25 & 55 kDa, 25 & 55 kDa for Human IgG. Other band(s): Human IgG splice variants and isoforms.

Biorbyt Ltd.

7 Signet Court, Swann Road
Cambridge
CB5 8LA
United Kingdom

Email: info@biorbyt.com, support@biorbyt.com
Phone: +44 (0)1223 859353 | Fax: +1 (415) 651-8558

Biorbyt LLC

68 TW Alexander Drive
Research Triangle Park
Durham
NC 27713
United States

Email: info@biorbyt.com, support@biorbyt.com
Phone: +1 (415) 906-5211 | Fax: +1 (415) 651-8558