

Product Datasheet

Chicken IgG (H&L) Antibody Fluorescein Conjugated Pre-Adsorbed (orb346927)

Catalog Number	orb346927
Category	Antibodies
Description	Chicken IgG (H&L) antibody (FITC)
Clonality	Polyclonal
Species/Host	Donkey
Isotype	IgG
Conjugation	FITC
Reactivity	Gallus
Form/Appearance	Lyophilized
Concentration	1 mg/mL
Buffer/Preservatives	Preservative: 0.01% (w/v) Sodium Azide. Stabilizer: 10 mg/mL Bovine Serum Albumin (rAlbumin) - Immunoglobulin and Protease free; Buffer: 0.02 M Potassium Phosphate, 0.15 M Sodium Chloride, pH 7.2
Purity	This product was prepared from monospecific antiserum by immunoaffinity chromatography using Chicken IgG coupled to agarose beads followed by conjugation to fluorochrome and extensive dialysis against the buffer stated above. Assay by immunoelectrophoresis resulted in a single precipitin arc against anti-fluorescein, anti-Donkey Serum, Chicken IgG and Chicken Serum. No reaction was observed against Bovine, Goat, Guinea Pig, Hamster, Horse, Human, Mouse, Rabbit, Rat and Sheep Serum Proteins. This antibody will react with heavy chains of Chicken IgG and with light chains of most Chicken immunoglobulins.

Biorbyt Ltd.

7 Signet Court, Swann Road
Cambridge
CB5 8LA
United Kingdom

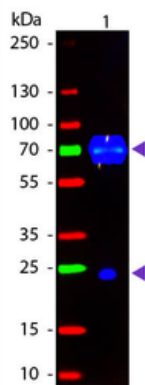
Email: info@biorbyt.com, support@biorbyt.com
Phone: [+44 \(0\)1223 859353](tel:+44(0)1223859353) | Fax: [+1 \(415\) 651-8558](tel:+1(415)651-8558)

Biorbyt LLC

68 TW Alexander Drive
Research Triangle Park
Durham
NC 27713-2847
United States

Email: info@biorbyt.com, support@biorbyt.com
Phone: [+1 \(415\) 906-5211](tel:+1(415)906-5211) | Fax: [+1 \(415\) 651-8558](tel:+1(415)651-8558)

Immunogen	Chicken IgG whole molecule
Tested applications	DOT, FC, FLISA, IF, WB
Dilution range	FLISA: 1:10,000 - 1:50,000, FC: 1:500 - 1:2,500, IF: 1:1,000 - 1:5,000
Application notes	Anti-Chicken IgG Fluorescein Antibody has been tested by dot blot and western blot. This product is suitable for immunomicroscopy and flow cytometry or FACS analysis as well as other antibody based fluorescent assays requiring extremely low background levels, absence of F(c) mediated binding, lot-to-lot consistency, high titer and specificity.
Antibody Type	Secondary Antibody
Storage	Store vial at 4° C prior to restoration. For extended storage aliquot contents and freeze at -20° C or below. Avoid cycles of freezing and thawing. Centrifuge product if not completely clear after standing at room temperature. This product is stable for several weeks at 4° C as an undiluted liquid. Dilute only prior to immediate use.
Note	For research use only
Expiration Date	12 months from date of receipt.



Western Blot of Fluorescein conjugated Donkey anti-Chicken IgG Pre-adsorbed secondary antibody. Lane 1: Chicken IgG (p/n orb2652774). Load: 50 ng per lane. Primary antibody: none. Secondary antibody: Fluorescein donkey secondary antibody at 1:1000 for 60 min at RT. Block: orb348637 for 30 min at RT. Predicted/Observed size: 25 & 72 kDa, 25 & 72 kDa for Chicken IgY.

Biorbyt Ltd.

7 Signet Court, Swann Road
Cambridge
CB5 8LA
United Kingdom

Email: info@biorbyt.com, support@biorbyt.com

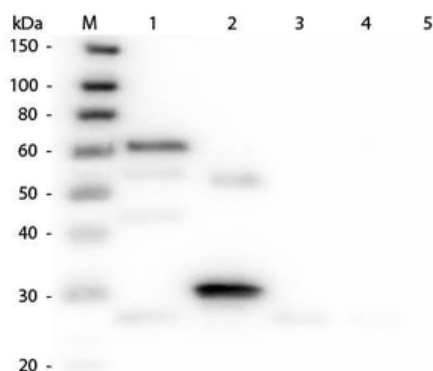
Phone: [+44 \(0\)1223 859353](tel:+44(0)1223859353) | Fax: [+1 \(415\) 651-8558](tel:+1(415)651-8558)

Biorbyt LLC

68 TW Alexander Drive
Research Triangle Park
Durham
NC 27713-2847
United States

Email: info@biorbyt.com, support@biorbyt.com

Phone: [+1 \(415\) 906-5211](tel:+1(415)906-5211) | Fax: [+1 \(415\) 651-8558](tel:+1(415)651-8558)



Western Blot of Unconjugated Anti-Chicken IgG (H&L) (DONKEY) Antibody (Min X Bv Gt GP Ham Hs Hu Ms Rb Rt & Sh Serum Proteins) (p/n orb346926). Lane M: 3 μ l Molecular Ladder. Lane 1: Chicken IgG whole molecule (p/n orb2652774). Lane 2: Chicken IgG F(c) Fragment (p/n orb346051). Lane 3: Chicken IgG Fab Fragment (p/n orb2652771). Lane 4: Chicken IgM Whole Molecule (p/n orb346054). Lane 5: Chicken Serum. All samples were reduced. Load: 50 ng per lane. Block: orb348637 for 30 min at RT. Primary Antibody: Anti-Chicken IgG (H&L) (DONKEY) Antibody (Min X Bv Gt GP Ham Hs Hu Ms Rb Rt & Sh Serum Proteins) (p/n orb346926) 1:3000 for 60 min at RT. Secondary antibody: Anti-Donkey IgG (GOAT) Peroxidase Conjugated Antibody (p/n orb347994) 1:40000 in orb348637 for 30 min at RT. Predicted/Observed Size: 25 and 72 kDa for Chicken IgY and Serum, 25 kDa for F(c) and Fab, 75 kDa for IgM. Chicken F(c) migrates slightly higher.

Biorbyt Ltd.

7 Signet Court, Swann Road
Cambridge
CB5 8LA
United Kingdom

Email: info@biorbyt.com, support@biorbyt.com

Phone: [+44 \(0\)1223 859353](tel:+44(0)1223859353) | Fax: [+1 \(415\) 651-8558](tel:+1(415)651-8558)

Biorbyt LLC

68 TW Alexander Drive
Research Triangle Park
Durham
NC 27713-2847
United States

Email: info@biorbyt.com, support@biorbyt.com

Phone: [+1 \(415\) 906-5211](tel:+1(415)906-5211) | Fax: [+1 \(415\) 651-8558](tel:+1(415)651-8558)