

Product Datasheet

Chicken IgM (mu chain) Secondary Antibody (orb346885)

Description	Chicken IgM (mu chain) antibody
Species/Host	Goat
Reactivity	Gallus
Conjugation	Unconjugated
Tested Applications	ELISA, IHC, WB
Immunogen	Chicken IgM whole molecule
Preservatives	0.01% (w/v) Sodium Azide
Form/Appearance	Liquid (sterile filtered)
Concentration	1.0 mg/mL
Storage	Store Anti-IgM secondary antibody at 4° C prior to opening. This product is stable for several weeks at 4° C as an undiluted liquid. Dilute only prior to immediate use. For extended storage aliquot contents and freeze at -20° C or below. Avoid cycles of freezing and thawing.
Note	For research use only
Application notes	Anti-Chicken IgM antibody has been tested by ELISA and SDS-PAGE and is suitable for ELISA, western blot, and immunohistochemistry, as well as other assays requiring lot-to-lot consistency.
Isotype	IgG
Clonality	Polyclonal
Antibody Type	Secondary Antibody

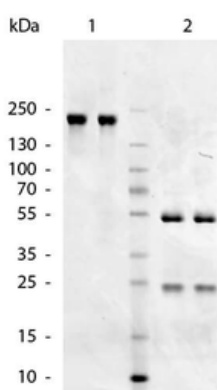
Biorbyt Ltd.

7 Signet Court, Swann's Road,
Cambridge, CB5 8LA, United Kingdom
Email: info@biorbyt.com, support@biorbyt.com
Phone: [+44 \(0\) 1223 859-353](tel:+44(0)1223859353) | Fax: [+1 \(415\) 651-8558](tel:+1(415)6518558)

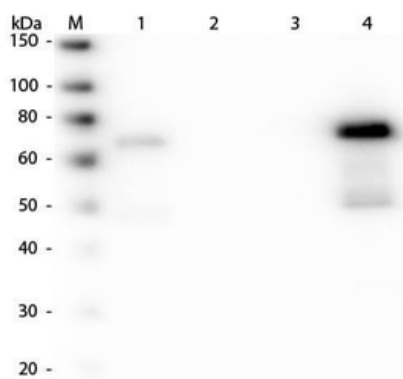
Biorbyt LLC.

68 TW Alexander Drive,
Durham, NC, 27713, United States
Email: info@biorbyt.com, support@biorbyt.com
Phone: [+1 \(415\) 906-5211](tel:+1(415)9065211) | Fax: [+1 \(415\) 651-8558](tel:+1(415)6518558)

Purity	Chicken Secondary Antibody was prepared from monospecific antiserum by immunoaffinity chromatography using Chicken IgM coupled to agarose beads followed by solid phase adsorption(s) to remove any unwanted reactivities. Assay by immunoelectrophoresis resulted in a single precipitin arc against anti-Goat Serum, Chicken IgM and Chicken Serum. No reaction was observed against other Chicken heavy or light chain proteins.
Dilution Range	ELISA: 1:20,000 - 1:100,000, IHC: 1:1,000 - 1:5,000, WB: 1:2,000 - 1:10,000
Expiration Date	12 months from date of receipt.



SDS-Page of Goat anti-Chicken IgM (Mu Chain) antibody. Lane 1: Gt-a-Chicken IgM Antibody - Non-Reduced. Lane 2: Gt-a-Chicken IgM Antibody - Reduced. Load: 1.0 µg per lane. Predicted/Observed size: 50 kDa, 25 kDa for Reduced. Other band(s): none.



Western Blot of Anti-Chicken IgM (mu chain) (GOAT) Antibody Peroxidase Conjugated (p/n orb346891). Lane M: 3 µl Molecular Ladder. Lane 1: Chicken IgG whole molecule (p/n orb2652774). Lane 2: Chicken IgG F(c) Fragment (p/n orb346051). Lane 3: Chicken IgG F(ab) Fragment (p/n orb2652771). Lane 4: Chicken IgM Whole Molecule (p/n orb346054). All samples were reduced. Load: 50 ng per lane. Block: orb348637 for 30 min at RT. Primary Antibody: Anti-Chicken IgM (mu chain) (GOAT) Antibody Peroxidase Conjugated (p/n orb346891) 1:30000 for 60 min at RT. Predicted/Observed Size: 25 and 72 kDa for Chicken IgY, 25 kDa for F(c) and Fab, 75 kDa for IgM. Chicken F(c) migrates slightly higher.

Biorbyt Ltd.

7 Signet Court, Swann's Road,
Cambridge, CB5 8LA, United Kingdom
Email: info@biorbyt.com, support@biorbyt.com
Phone: [+44 \(0\) 1223 859-353](tel:+44(0)1223859353) | Fax: [+1 \(415\) 651-8558](tel:+1(415)6518558)

Biorbyt LLC.

68 TW Alexander Drive,
Durham, NC, 27713, United States
Email: info@biorbyt.com, support@biorbyt.com
Phone: [+1 \(415\) 906-5211](tel:+1(415)9065211) | Fax: [+1 \(415\) 651-8558](tel:+1(415)6518558)