

Product Datasheet

F(ab')₂ Swine IgG (H&L) Antibody (orb346806)

Description	F(ab') ₂ Swine IgG (H&L) antibody
Species/Host	Rabbit
Reactivity	Porcine
Conjugation	Unconjugated
Tested Applications	ELISA, IHC, WB
Immunogen	Swine IgG whole molecule
Preservatives	None
Form/Appearance	Lyophilized
Concentration	10.0 mg/mL
Storage	Store vial at 4° C prior to restoration. For extended storage aliquot contents and freeze at -20° C or below. Avoid cycles of freezing and thawing. Centrifuge product if not completely clear after standing at room temperature. This product is stable for several weeks at 4° C as an undiluted liquid. Dilute only prior to immediate use.
Note	For research use only
Application notes	F(ab') ₂ Anti-Swine IgG Antibody has been tested by Western Blot and is suitable for immunomicroscopy and flow cytometry or FACS analysis as well as other antibody based fluorescent assays requiring extremely low background levels, absence of F(c) mediated binding, lot-to-lot consistency, high titer and specificity. The maximum amount of reagent required to stain 1 x 10E6 cells in flow cytometry is approximately 1.0 µg of antibody. Lesser amounts of reagent may be sufficient for staining. Optimal titers for other applications should be determined by the researcher. As a general guideline dilutions of 1:100 to 1:250 should be suitable for most applications.
Isotype	IgG F(ab') ₂

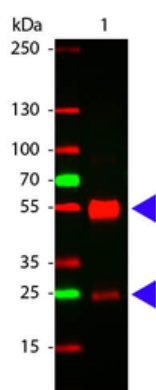
Biorbyt Ltd.

7 Signet Court, Swann's Road,
Cambridge, CB5 8LA, United Kingdom
Email: info@biorbyt.com, support@biorbyt.com
Phone: [+44 \(0\) 1223 859-353](tel:+44(0)1223859353) | Fax: [+1 \(415\) 651-8558](tel:+1(415)6518558)

Biorbyt LLC.

68 TW Alexander Drive,
Durham, NC, 27713, United States
Email: info@biorbyt.com, support@biorbyt.com
Phone: [+1 \(415\) 906-5211](tel:+1(415)9065211) | Fax: [+1 \(415\) 651-8558](tel:+1(415)6518558)

Clonality	Polyclonal
Antibody Type	Secondary Antibody
Purity	This product is a F(ab') ₂ fragment of IgG fraction antibody purified from monospecific antiserum by a multi-step process which includes delipidation, salt fractionation, ion exchange chromatography and pepsin digestion followed by chromatographic separation and extensive dialysis against the buffer stated above. Assay by immunoelectrophoresis resulted in a single precipitin arc against anti-Rabbit Serum, Swine IgG and Swine Serum. No reaction was observed against anti-Rabbit IgG F(c) or anti-Pepsin.
Dilution Range	ELISA: 1:20,000 - 1:100,000, IHC: 1:1,000 - 1:5,000, WB: 1:2,000 - 1:10,000
Expiration Date	12 months from date of receipt.



Western Blot of Rabbit anti-Swine antibody. Lane 1: Swine IgG. Load: 100 ng per lane. Primary antibody: Swine antibody at 1:1000 for overnight at 4°C. Secondary antibody: DyLight™ swine secondary antibody at 1:20000 for 30 min at RT Block: orb348637 for 30 min at RT. Predicted/Observed size: 55 and 28 kDa for Swine IgG.

Biorbyt Ltd.

7 Signet Court, Swann's Road,
Cambridge, CB5 8LA, United Kingdom
Email: info@biorbyt.com, support@biorbyt.com
Phone: [+44 \(0\) 1223 859-353](tel:+44(0)1223859353) | Fax: [+1 \(415\) 651-8558](tel:+1(415)6518558)

Biorbyt LLC.

68 TW Alexander Drive,
Durham, NC, 27713, United States
Email: info@biorbyt.com, support@biorbyt.com
Phone: [+1 \(415\) 906-5211](tel:+1(415)9065211) | Fax: [+1 \(415\) 651-8558](tel:+1(415)6518558)