

Product Datasheet

Swine IgG (H&L) Antibody Fluorescein Conjugated (orb346715)

Catalog Number	orb346715
Description	Swine IgG (H&L) antibody (FITC)
Species/Host	Rabbit
Reactivity	Porcine
Conjugation	FITC
Tested Applications	FC, FLISA, IF, WB
Immunogen	Swine IgG whole molecule
Preservatives	0.01% (w/v) Sodium Azide
Form/Appearance	Lyophilized
Concentration	10.0 mg/mL
Storage	Store vial at 4° C prior to restoration. For extended storage aliquot contents and freeze at -20° C or below. Avoid cycles of freezing and thawing. Centrifuge product if not completely clear after standing at room temperature. This product is stable for several weeks at 4° C as an undiluted liquid. Dilute only prior to immediate use.
Note	For research use only
Application notes	Anti-Swine IgG (H&L) Fluorescein Antibody has been tested by western blot and is designed for immunofluorescence microscopy, fluorescence based plate assays (FLISA) and fluorescent western blotting. This product is also suitable for multiplex analysis, including multicolor imaging, utilizing various commercial platforms.
Isotype	IgG

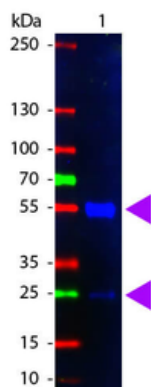
Biorbyt Ltd.

7 Signet Court, Swann's Road,
Cambridge, CB5 8LA, United Kingdom
Email: info@biorbyt.com, support@biorbyt.com
Phone: [+44 \(0\) 1223 859-353](tel:+44(0)1223859353) | Fax: [+1 \(415\) 651-8558](tel:+1(415)6518558)

Biorbyt LLC.

68 TW Alexander Drive,
Durham, NC, 27713, United States
Email: info@biorbyt.com, support@biorbyt.com
Phone: [+1 \(415\) 906-5211](tel:+1(415)9065211) | Fax: [+1 \(415\) 651-8558](tel:+1(415)6518558)

Clonality	Polyclonal
Antibody Type	Secondary Antibody
Purity	This product is an IgG fraction antibody purified from monospecific antiserum by a multi-step process which includes delipidation, salt fractionation and ion exchange chromatography followed by extensive dialysis against the buffer stated above. Assay by immunoelectrophoresis resulted in a single precipitin arc against anti-fluorescein, anti-Rabbit Serum, Swine IgG and Swine Serum.
Dilution Range	FLISA: 1:10,000 - 1:50,000, FC: 1:500 - 1:2,500, IF: 1:1,000 - 1:5,000
Expiration Date	12 months from date of receipt.



Western Blot of Fluorescein Conjugated Rabbit anti-Swine IgG antibody. Lane 1: Swine IgG. Lane 2: none. Load: 100 ng per lane. Primary antibody: none. Secondary antibody: Fluorescein swine secondary antibody at 1:1000 for 60 min at RT. Block: orb348637 for 30 min at RT. Predicted/Observed size: 55 kDa, 28 kDa for Rabbit IgG. Other band(s): none.

Biorbyt Ltd.

7 Signet Court, Swann's Road,
Cambridge, CB5 8LA, United Kingdom
Email: info@biorbyt.com, support@biorbyt.com
Phone: [+44 \(0\) 1223 859-353](tel:+44(0)1223859353) | Fax: [+1 \(415\) 651-8558](tel:+1(415)6518558)

Biorbyt LLC.

68 TW Alexander Drive,
Durham, NC, 27713, United States
Email: info@biorbyt.com, support@biorbyt.com
Phone: [+1 \(415\) 906-5211](tel:+1(415)9065211) | Fax: [+1 \(415\) 651-8558](tel:+1(415)6518558)