

Product Datasheet

MYC Epitope Tag Antibody Biotin Conjugated (orb345879)

Catalog Number	orb345879
Category	Antibodies
Description	MYC Epitope Tag antibody (Biotin)
Clonality	Polyclonal
Species/Host	Rabbit
Isotype	IgG
Conjugation	Biotin
Form/Appearance	Lyophilized
Concentration	1.0 mg/mL
Buffer/Preservatives	Preservative: 0.01% (w/v) Sodium Azide. Stabilizer: 10 mg/mL Bovine Serum Albumin (rAlbumin) - Immunoglobulin and Protease free; Buffer: 0.02 M Potassium Phosphate, 0.15 M Sodium Chloride, pH 7.2
Purity	This affinity purified antibody is directed against human c-myc and is useful in determining its presence in various assays. This polyclonal anti-Myc-tag antibody detects overexpressed proteins containing the Myc epitope tag. The antibody recognizes the Myc-tag (Glu-Gln-Lys-Leu-Ile-Ser-Glu-Glu-Asp-Leu) fused to either the amino- or carboxy- termini of targeted proteins in transfected or transformed cells. Assay by immunoelectrophoresis resulted in a single precipitin arc against anti-biotin and anti-Rabbit Serum.
Immunogen	This antibody was purified from whole rabbit serum prepared by repeated immunizations with Myc epitope tag peptide E-Q-K-L-I-S-E-E-D-L conjugated to KLH using maleimide. The sequence corresponds to aa 410-419 of human c-Myc.

Biorbyt Ltd.

7 Signet Court, Swann Road
Cambridge
CB5 8LA
United Kingdom

Email: info@biorbyt.com, support@biorbyt.com
Phone: [+44 \(0\)1223 859353](tel:+44(0)1223859353) | Fax: [+1 \(415\) 651-8558](tel:+1(415)651-8558)

Biorbyt LLC

68 TW Alexander Drive
Research Triangle Park
Durham
NC 27713
United States

Email: info@biorbyt.com, support@biorbyt.com
Phone: [+1 \(415\) 906-5211](tel:+1(415)906-5211) | Fax: [+1 \(415\) 651-8558](tel:+1(415)651-8558)

Tested applications	DOT, ELISA, IHC, WB
Dilution range	ELISA: 1:100,000 - 1:500,000, IHC: 1:1,000 - 1:5,000, WB: 1:2,000 - 1:10,000
Application notes	Anti-myc has utility to detect the fusion protein of the myc epitope cloned along with the target gene. As such, anti-myc/myc can be used to identify fusion proteins containing the myc epitope. The antibody recognizes the Myc tag fused either to the amino- or carboxy- termini of targeted proteins. This antibody has been tested by ELISA and western blotting against both the immunizing peptide and myc containing recombinant proteins. Although not tested, this antibody is likely functional for immunoprecipitation and immunocytochemistry. Biotin conjugated anti-EPITOPE tag antibodies are generally suitable for immunoblotting, ELISA, immunohistochemistry, immunomicroscopy as well as other antibody based assays using streptavidin or avidin conjugates.
Antibody Type	Primary Antibody
Storage	Store vial at 4° C prior to restoration. For extended storage aliquot contents and freeze at -20° C or below. Avoid cycles of freezing and thawing. Centrifuge product if not completely clear after standing at room temperature. This product is stable for several weeks at 4° C as an undiluted liquid. Dilute only prior to immediate use.
Note	For research use only
Expiration Date	12 months from date of receipt.



Anti-Myc epitope tag polyclonal antibody detects Myc-tagged recombinant proteins by western blot. Polyclonal rabbit-anti-Myc epitope tag at 0.5-1.0 µg/ml was used to detect 1.0 ug of recombinant protein containing the Myc epitope tag. A 4-20% gradient gel was used to separate the protein by SDS-PAGE. The protein was transferred to nitrocellulose using standard methods. After blocking the membrane was probed with the primary antibody for 1 h at room temperature followed by washes and reaction with a 1:2500 dilution of IRDye™ 800 conjugated Gt-a-Rabbit IgG [H&L] for 30 min at room temperature.

Biorbyt Ltd.

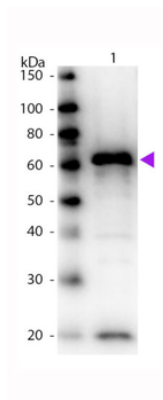
7 Signet Court, Swann Road
Cambridge
CB5 8LA
United Kingdom

Email: info@biorbyt.com, support@biorbyt.com
Phone: [+44 \(0\)1223 859353](tel:+44(0)1223859353) | Fax: [+1 \(415\) 651-8558](tel:+1(415)651-8558)

Biorbyt LLC

68 TW Alexander Drive
Research Triangle Park
Durham
NC 27713
United States

Email: info@biorbyt.com, support@biorbyt.com
Phone: [+1 \(415\) 906-5211](tel:+1(415)906-5211) | Fax: [+1 \(415\) 651-8558](tel:+1(415)651-8558)



Western Blot of Biotin Conjugated Rabbit anti-Myc Epitope Tag antibody. Lane 1: 12-Tag Lysate. Lane 2: None. Load: N/A. Primary antibody: None. Secondary antibody: Biotin rabbit secondary antibody at 1:1000 for 60 min at RT. Block: orb348637 for 30 min at RT. Predicted/Observed size: 60 kDa, 60 kDa for Myc Epitope Tag. Other band(s): Myc splice variants and isoforms.

Biorbyt Ltd.

7 Signet Court, Swann Road
Cambridge
CB5 8LA
United Kingdom

Email: info@biorbyt.com, support@biorbyt.com

Phone: [+44 \(0\)1223 859353](tel:+44(0)1223859353) | Fax: [+1 \(415\) 651-8558](tel:+1(415)651-8558)

Biorbyt LLC

68 TW Alexander Drive
Research Triangle Park
Durham
NC 27713
United States

Email: info@biorbyt.com, support@biorbyt.com

Phone: [+1 \(415\) 906-5211](tel:+1(415)906-5211) | Fax: [+1 \(415\) 651-8558](tel:+1(415)651-8558)