

Product Datasheet

Phospho Enol Pyruvate Carboxylase Antibody (orb344820)

Description	Enol Pyruvate Carboxylase antibody
Species/Host	Rabbit
Reactivity	Plant
Conjugation	Unconjugated
Tested Applications	ELISA, WB
Immunogen	Anti-Phospho Enol Pyruvate Carboxylase Antibody was produced by repeated immunizations with maize leaves Phospho-enol-pyruvate Carboxylase.
Preservatives	0.01% (w/v) Sodium Azide
Form/Appearance	Lyophilized
Concentration	1.0 mg/ml
Storage	Store vial at 4° C prior to restoration. For extended storage aliquot contents and freeze at -20° C or below. Avoid cycles of freezing and thawing. Centrifuge product if not completely clear after standing at room temperature. This product is stable for several weeks at 4° C as an undiluted liquid. Dilute only prior to immediate use.
Note	For research use only
Application notes	Anti-Phospho Enol Pyruvate Carboxylase antibody has been tested by western blotting and ELISA is suitable for IHC. Researchers should determine optimal titers for applications that are not stated below.
Isotype	IgG
Clonality	Polyclonal

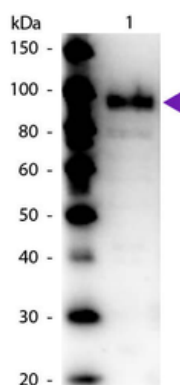
Biorbyt Ltd.

7 Signet Court, Swann's Road,
Cambridge, CB5 8LA, United Kingdom
Email: info@biorbyt.com, support@biorbyt.com
Phone: [+44 \(0\) 1223 859-353](tel:+441223859353) | Fax: [+1 \(415\) 651-8558](tel:+14156518558)

Biorbyt LLC.

68 TW Alexander Drive,
Durham, NC, 27713, United States
Email: info@biorbyt.com, support@biorbyt.com
Phone: [+1 \(415\) 906-5211](tel:+14159065211) | Fax: [+1 \(415\) 651-8558](tel:+14156518558)

Antibody Type	Primary Antibody
Purity	Anti-Phospho Enol Pyruvate Carboxylase is an IgG fraction antibody purified from monospecific antiserum by a multi-step process which includes delipidation, salt fractionation and ion exchange chromatography followed by extensive dialysis against the buffer stated above. Assay by immunoelectrophoresis resulted in a single precipitin arc against anti-Rabbit Serum as well as purified and partially purified Phospho-enol-Pyruvate Carboxylase [Maize]. Cross reactivity against Phospho-enol-Pyruvate Carboxylase from other tissues and species may occur but have not been specifically determined.
Uniprot ID	B8XPZ2
NCBI	ACN80021.1
Dilution Range	ELISA: 1:10,000 - 1:40,000, WB: 1:1,000 - 1:4,000
Expiration Date	12 months from date of receipt.



Western Blot of Rabbit Anti-Phospho Enol Pyruvate (PEP) Carboxylase antibody. Lane 1: Phospho Enol Pyruvate (PEP) Carboxylase. Lane 2: None. Load: 50 ng per lane. Primary antibody: Phospho Enol Pyruvate (PEP) Carboxylase primary antibody at 1:1000 overnight at 4°C. Secondary antibody: Peroxidase rabbit secondary antibody at 1:40000 for 30 min at RT. Blocking: orb348637 for 30 min at RT. Predicted/Observed size: 100 kDa, 100 kDa for Phospho Enol Pyruvate (PEP) Carboxylase. Other band(s): None.

Biorbyt Ltd.

7 Signet Court, Swann's Road,
Cambridge, CB5 8LA, United Kingdom
Email: info@biorbyt.com, support@biorbyt.com
Phone: [+44 \(0\) 1223 859-353](tel:+44(0)1223859353) | Fax: [+1 \(415\) 651-8558](tel:+1(415)6518558)

Biorbyt LLC.

68 TW Alexander Drive,
Durham, NC, 27713, United States
Email: info@biorbyt.com, support@biorbyt.com
Phone: [+1 \(415\) 906-5211](tel:+1(415)9065211) | Fax: [+1 \(415\) 651-8558](tel:+1(415)6518558)