

Product Datasheet

MDR1 Rabbit Polyclonal Antibody (orb340143)

Catalog Number	orb340143
Category	Antibodies
Description	MDR1 Rabbit Polyclonal Antibody is an unconjugated antibody that specifically recognizes MDR1. Recongnized detects endogenous levels of total MDR1 antibody. Generated against a KLH conjugated synthetic peptide derived from human MDR1. The peptide is available as orb374957. It is supplied in liquid form and exhibits reactivity with Human, Mouse and Rat samples. The suitable applications for this antibody are ELISA, IHC-P and WB.
Target	MDR1. Recongnized detects endogenous levels of total MDR1 antibody
Clonality	Polyclonal
Species/Host	Rabbit
Isotype	IgG
Conjugation	Unconjugated
Reactivity	Human, Mouse, Rat
Form/Appearance	10 mM PBS, 0.02% sodium azide
Concentration	- 100 µg (in 200 µl): 0.5 mg/ml- 200 µg (in 400 µl): 0.5 mg/ml
Purity	Polyclonal antibodies are purified by peptide affinity chromatography
Immunogen	KLH conjugated synthetic peptide derived from human MDR1. Please contact us for the exact immunogen sequence. The peptide is available as orb374957.
UniProt ID	P08183, P06795, P43245
MW	141 kDa

Biorbyt Ltd.

7 Signet Court, Swann Road
Cambridge
CB5 8LA
United Kingdom

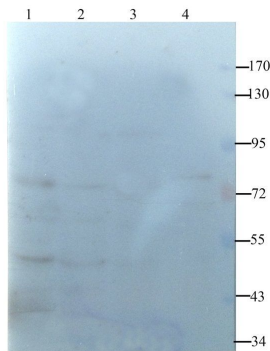
Email: info@biorbyt.com, support@biorbyt.com
Phone: [+44 \(0\)1223 859353](tel:+44(0)1223859353) | Fax: [+1 \(415\) 651-8558](tel:+1(415)651-8558)

Biorbyt LLC

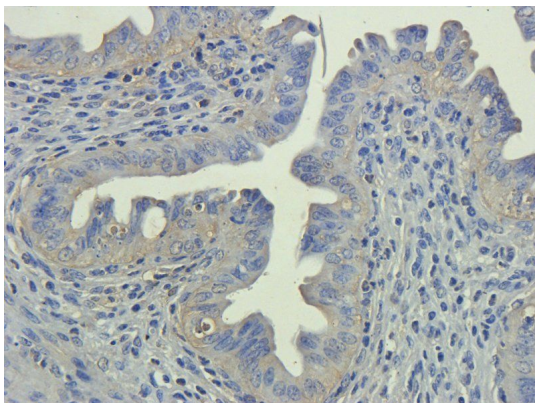
68 TW Alexander Drive
Research Triangle Park
Durham
NC 27713-2847
United States

Email: info@biorbyt.com, support@biorbyt.com
Phone: [+1 \(415\) 906-5211](tel:+1(415)906-5211) | Fax: [+1 \(415\) 651-8558](tel:+1(415)651-8558)

Tested applications	ELISA, IHC-P, WB
Dilution range	IHC-P:1:100-500, WB: 1:100-1000
Storage	Maintain refrigerated at 2-8°C for up to 2 weeks. For long term storage store at -20°C in small aliquots to prevent freeze-thaw cycles.
Note	For research use only
Entrez	5243
Expiration Date	12 months from date of receipt.



Western blot analysis of mouse kidney (lane 1), rat liver (lane 2), rat brain (lane 3), rat thymus (lane 3) using MDR1 antibody (1 ug/ml)



IHC-P staining of mouse uterus tissue using MDR1 antibody (2.5 ug/ml)

Biorbyt Ltd.

7 Signet Court, Swann Road
Cambridge
CB5 8LA
United Kingdom

Email: info@biorbyt.com, support@biorbyt.com

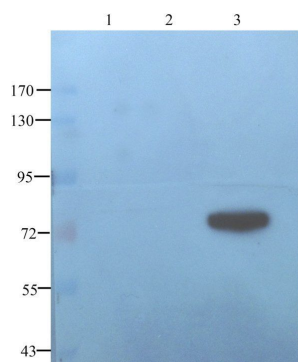
Phone: [+44 \(0\)1223 859353](tel:+44(0)1223859353) | Fax: [+1 \(415\) 651-8558](tel:+1(415)651-8558)

Biorbyt LLC

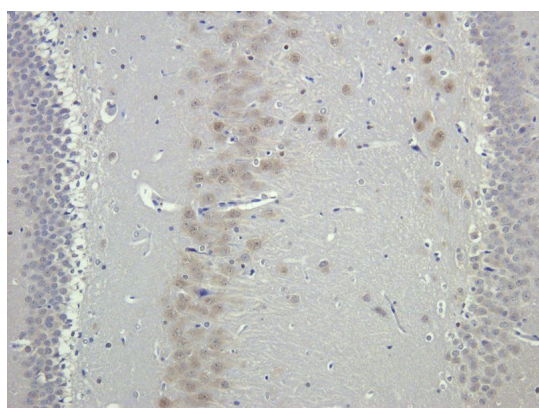
68 TW Alexander Drive
Research Triangle Park
Durham
NC 27713-2847
United States

Email: info@biorbyt.com, support@biorbyt.com

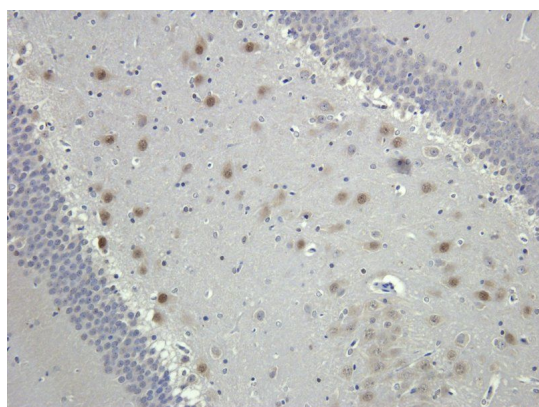
Phone: [+1 \(415\) 906-5211](tel:+1(415)906-5211) | Fax: [+1 \(415\) 651-8558](tel:+1(415)651-8558)



WB analysis of rat colon (lane 1), rat pancreas (lane 2), rat uterus (lane 3) using MDR1 antibody (1 ug/ml)



Immunohistochemical staining of paraffin embedded rat brain tissue using anti-MDR1 (2.5 ug/ml)



IHC-P image of rat brain tissue using MDR1 antibody (2.5 ug/ml)

Biorbyt Ltd.

7 Signet Court, Swann Road
Cambridge
CB5 8LA
United Kingdom

Email: info@biorbyt.com, support@biorbyt.com

Phone: [+44 \(0\)1223 859353](tel:+44(0)1223859353) | Fax: [+1 \(415\) 651-8558](tel:+1(415)651-8558)

Biorbyt LLC

68 TW Alexander Drive
Research Triangle Park
Durham
NC 27713-2847
United States

Email: info@biorbyt.com, support@biorbyt.com

Phone: [+1 \(415\) 906-5211](tel:+1(415)906-5211) | Fax: [+1 \(415\) 651-8558](tel:+1(415)651-8558)