

## Product Datasheet

### RCE1 Antibody (N-term W57) (orb33883)

|                             |  |
|-----------------------------|--|
| <b>Catalog Number</b>       | orb33883   |
| <b>Category</b>             | Antibodies   |
| <b>Description</b>          | Peptide affinity purified rabbit polyclonal antibody.  |
| <b>Target</b>               | RCE1   |
| <b>Clonality</b>            | Polyclonal   |
| <b>Species/Host</b>         | Rabbit   |
| <b>Isotype</b>              | Rabbit IgG   |
| <b>Conjugation</b>          | Unconjugated   |
| <b>Reactivity</b>           | Human  |
| <b>Predicted Reactivity</b> | Mouse, Rat   |
| <b>Form/Appearance</b>      | Purified polyclonal antibody supplied in PBS with 0.09% (W/V) sodium azide. This antibody is purified through a protein A column, followed by peptide affinity purification. |
| <b>Immunogen</b>            | Synthetic Peptide  |
| <b>UniProt ID</b>           | <b>Q9Y256</b>  |
| <b>MW</b>                   | 35833  |
| <b>Tested applications</b>  | FC, IHC-P, WB  |
| <b>Dilution range</b>       | WB: 1:1000, IHC-P: 1:10-50, FACS: 1:10-50  |
| <b>Antibody Type</b>        | Primary Antibody   |

**Biorbyt Ltd.**

7 Signet Court, Swann Road  
Cambridge  
CB5 8LA  
United Kingdom

Email: [info@biorbyt.com](mailto:info@biorbyt.com), [support@biorbyt.com](mailto:support@biorbyt.com)

Phone: [+44 \(0\)1223 859353](tel:+44(0)1223859353) | Fax: [+1 \(415\) 651-8558](tel:+1(415)651-8558)

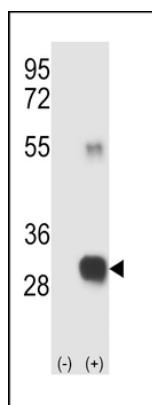
**Biorbyt LLC**

68 TW Alexander Drive  
Research Triangle Park  
Durham  
NC 27713  
United States

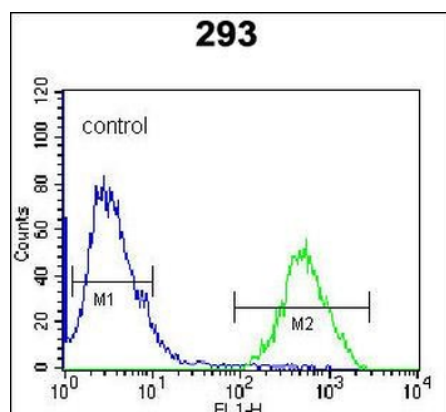
Email: [info@biorbyt.com](mailto:info@biorbyt.com), [support@biorbyt.com](mailto:support@biorbyt.com)

Phone: [+1 \(415\) 906-5211](tel:+1(415)906-5211) | Fax: [+1 \(415\) 651-8558](tel:+1(415)651-8558)

|                        |  |
|------------------------|--|
| <b>Clone Number</b>    | RB4777   |
| <b>Storage</b>         | Maintain refrigerated at 2-8°C for up to 2 weeks. For long term storage store at -20°C in small aliquots to prevent freeze-thaw cycles |
| <b>Note</b>            | For research use only  |
| <b>NCBI</b>            | <b>NP_005124.1, NP_001027450.1</b>   |
| <b>Expiration Date</b> | 12 months from date of receipt.  |



Western blot analysis of RCE1 (arrow) using rabbit polyclonal RCE1 Antibody (W57). 293 cell lysates (2 ug/lane) either nontransfected (Lane 1) or transiently transfected (Lane 2) with the RCE1 gene.



RCE1 Antibody (N-term W57) flow cytometric analysis of 293 cells (right histogram) compared to a negative control cell (left histogram). FITC-conjugated goat-anti-rabbit secondary antibodies were used for the analysis.

**Biorbyt Ltd.**

7 Signet Court, Swann Road  
Cambridge  
CB5 8LA  
United Kingdom

Email: [info@biorbyt.com](mailto:info@biorbyt.com), [support@biorbyt.com](mailto:support@biorbyt.com)

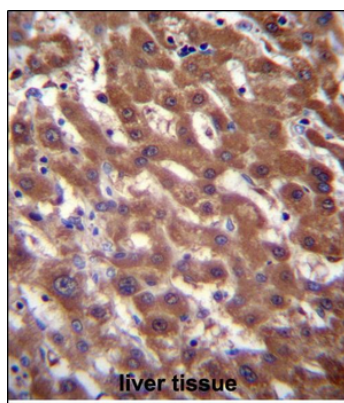
Phone: +44 (0)1223 859353 | Fax: +1 (415) 651-8558

**Biorbyt LLC**

68 TW Alexander Drive  
Research Triangle Park  
Durham  
NC 27713  
United States

Email: [info@biorbyt.com](mailto:info@biorbyt.com), [support@biorbyt.com](mailto:support@biorbyt.com)

Phone: +1 (415) 906-5211 | Fax: +1 (415) 651-8558



RCE1 Antibody (N-term W57) immunohistochemistry analysis in formalin fixed and paraffin embedded human liver tissue followed by peroxidase conjugation of the secondary antibody and DAB staining. This data demonstrates the use of RCE1 Antibody (N-term W57) for immunohistochemistry. Clinical relevance has not been evaluated.

**Biorbyt Ltd.**

7 Signet Court, Swann Road  
Cambridge  
CB5 8LA  
United Kingdom

Email: [info@biorbyt.com](mailto:info@biorbyt.com), [support@biorbyt.com](mailto:support@biorbyt.com)

Phone: [+44 \(0\)1223 859353](tel:+44(0)1223859353) | Fax: [+1 \(415\) 651-8558](tel:+1(415)651-8558)

**Biorbyt LLC**

68 TW Alexander Drive  
Research Triangle Park  
Durham  
NC 27713  
United States

Email: [info@biorbyt.com](mailto:info@biorbyt.com), [support@biorbyt.com](mailto:support@biorbyt.com)

Phone: [+1 \(415\) 906-5211](tel:+1(415)906-5211) | Fax: [+1 \(415\) 651-8558](tel:+1(415)651-8558)