

## Product Datasheet

### ERBB2 Antibody (orb334988)

<b>Catalog Number</b>	orb334988
<b>Category</b>	Antibodies
<b>Description</b>	Goat polyclonal antibody to ERBB2. This protein is a member of the epidermal growth factor (EGF) receptor family of receptor tyrosine kinases containing a single transmembrane domain and has an approximate molecular weight of 185 kDa. ERBB2 contains no ligand binding domain and interacts with other EGF receptor family members to form a heterodimer, stabilize ligand binding, and enhance kinase-mediated downstream signalling. It has been shown to be involved in embryonic development and cancer progression.
<b>Target</b>	Erb-b2 receptor tyrosine kinase
<b>Clonality</b>	Polyclonal
<b>Species/Host</b>	Goat
<b>Isotype</b>	IgG
<b>Conjugation</b>	Unconjugated
<b>Reactivity</b>	Bovine, Canine, Donkey, Equine, Feline, Gallus, Goat, Guinea pig, Hamster, Human, Mouse, Other, Porcine, Primate, Rabbit, Rat, Sheep
<b>Form/Appearance</b>	Polyclonal antibody supplied as a 200 µl (3 mg/ml) aliquot in PBS, 20% glycerol and 0.05% sodium azide. This antibody is epitope-affinity purified from goat antiserum.
<b>Concentration</b>	Please inquire
<b>Purification</b>	Epitope affinity purified

**Biorbyt Ltd.**

7 Signet Court, Swann Road  
Cambridge  
CB5 8LA  
United Kingdom

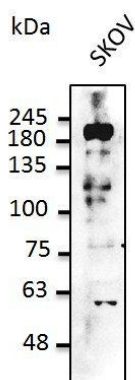
Email: [info@biorbyt.com](mailto:info@biorbyt.com), [support@biorbyt.com](mailto:support@biorbyt.com)  
Phone: [+44 \(0\)1223 859353](tel:+44(0)1223859353) | Fax: [+1 \(415\) 651-8558](tel:+1(415)651-8558)

**Biorbyt LLC**

68 TW Alexander Drive  
Research Triangle Park  
Durham  
NC 27713-2847  
United States

Email: [info@biorbyt.com](mailto:info@biorbyt.com), [support@biorbyt.com](mailto:support@biorbyt.com)  
Phone: [+1 \(415\) 906-5211](tel:+1(415)906-5211) | Fax: [+1 \(415\) 651-8558](tel:+1(415)651-8558)

<b>Immunogen</b>	Antigen: Purified recombinant peptide derived from within residues 1,177 aa to the C-terminus of human ERBB2 produced in E. coli. Antigen Sequence: MPHPPAFSPAFDNLYYWDQDPPERGAPPSTFKGTPTAENPEYLGLDVPV
<b>Tested applications</b>	IHC-Fr, IHC-P, WB
<b>Dilution range</b>	WB:1:500-1:5,000, IHC-P:1:250-1:1,000, IHC-F:1:250-1:1,000
<b>Application notes</b>	The antibody solution should be gently mixed before use.
<b>Specificity</b>	Detects endogenous levels of ERBB2 by Western blot.
<b>Storage</b>	Maintain refrigerated at 2-8°C for up to 2 weeks. For long term storage store at -20°C in small aliquots to prevent freeze-thaw cycles.
<b>Note</b>	For research use only
<b>Expiration Date</b>	12 months from date of receipt.



Western blot analysis of staining of SKOV using ERBB2 antibody

**Biorbyt Ltd.**

7 Signet Court, Swann Road  
Cambridge  
CB5 8LA  
United Kingdom

Email: [info@biorbyt.com](mailto:info@biorbyt.com), [support@biorbyt.com](mailto:support@biorbyt.com)

Phone: [+44 \(0\)1223 859353](tel:+44(0)1223859353) | Fax: [+1 \(415\) 651-8558](tel:+1(415)651-8558)

**Biorbyt LLC**

68 TW Alexander Drive  
Research Triangle Park  
Durham  
NC 27713-2847  
United States

Email: [info@biorbyt.com](mailto:info@biorbyt.com), [support@biorbyt.com](mailto:support@biorbyt.com)

Phone: [+1 \(415\) 906-5211](tel:+1(415)906-5211) | Fax: [+1 \(415\) 651-8558](tel:+1(415)651-8558)