

## Product Datasheet

### Cleaved LC3A Antibody (orb33336)

|                             |  |
|-----------------------------|--|
| <b>Catalog Number</b>       | orb33336   |
| <b>Category</b>             | Antibodies   |
| <b>Description</b>          | Rabbit polyclonal antibody to Cleaved LC3  |
| <b>Clonality</b>            | Polyclonal   |
| <b>Species/Host</b>         | Rabbit   |
| <b>Isotype</b>              | Rabbit IgG   |
| <b>Conjugation</b>          | Unconjugated   |
| <b>Reactivity</b>           | Human, Mouse   |
| <b>Predicted Reactivity</b> | Rat, Zebrafish   |
| <b>Form/Appearance</b>      | Purified polyclonal antibody supplied in PBS with 0.09% (W/V) sodium azide. This antibody is purified through a protein A column, followed by peptide affinity purification. |
| <b>Immunogen</b>            | Synthetic Peptide  |
| <b>UniProt ID</b>           | <b>Q9GZQ8, Q9H492</b>  |
| <b>Tested applications</b>  | ICC, IF, IHC-P, WB   |
| <b>Dilution range</b>       | IF - 1:25, WB - 1:500, IHC-P - 1:25, ICC - 1:10-50   |
| <b>Clone Number</b>         | BTD50120   |
| <b>Storage</b>              | Maintain refrigerated at 2-8°C for up to 2 weeks. For long term storage store at -20°C in small aliquots to prevent freeze-thaw cycles                                       |

**Biorbyt Ltd.**

7 Signet Court, Swann Road  
Cambridge  
CB5 8LA  
United Kingdom

Email: [info@biorbyt.com](mailto:info@biorbyt.com), [support@biorbyt.com](mailto:support@biorbyt.com)

Phone: [+44 \(0\)1223 859353](tel:+44(0)1223859353) | Fax: [+1 \(415\) 651-8558](tel:+1(415)651-8558)

**Biorbyt LLC**

68 TW Alexander Drive  
Research Triangle Park  
Durham  
NC 27713  
United States

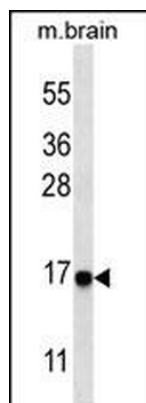
Email: [info@biorbyt.com](mailto:info@biorbyt.com), [support@biorbyt.com](mailto:support@biorbyt.com)

Phone: [+1 \(415\) 906-5211](tel:+1(415)906-5211) | Fax: [+1 \(415\) 651-8558](tel:+1(415)651-8558)

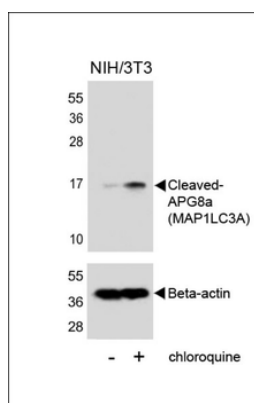
**Note** For research use only

**NCBI** [NP\\_852610.1](#), [NP\\_115903.1](#)

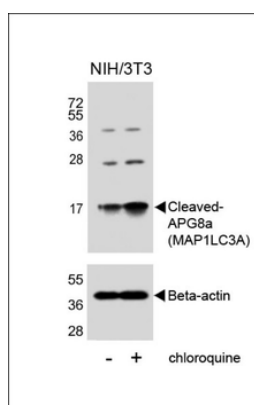
**Expiration Date** 12 months from date of receipt.



Western blot analysis of anti-cleaved-LC3 (APG8a) Pab in mouse brain tissue lysate. Cleaved-LC3 (APG8a) was detected using the purified Pab.



Western blot analysis of lysates from NIH/3T3 cells, untreated or treated with chloroquine, using Cleaved-APG8a (MAP1LC3A) (upper) or Beta-actin (lower).



Western blot analysis of lysates from NIH/3T3 cells, untreated or treated with chloroquine, using Cleaved-APG8a (MAP1LC3A) (upper) or Beta-actin (lower).

**Biorbyt Ltd.**

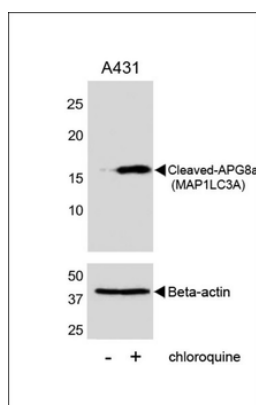
7 Signet Court, Swann Road  
Cambridge  
CB5 8LA  
United Kingdom

Email: [info@biorbyt.com](mailto:info@biorbyt.com), [support@biorbyt.com](mailto:support@biorbyt.com)  
Phone: [+44 \(0\)1223 859353](tel:+44(0)1223859353) | Fax: [+1 \(415\) 651-8558](tel:+1(415)651-8558)

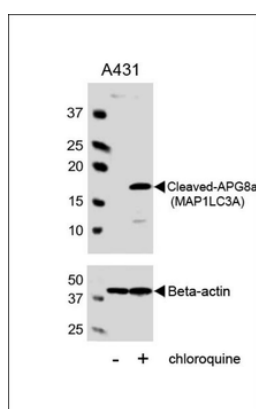
**Biorbyt LLC**

68 TW Alexander Drive  
Research Triangle Park  
Durham  
NC 27713  
United States

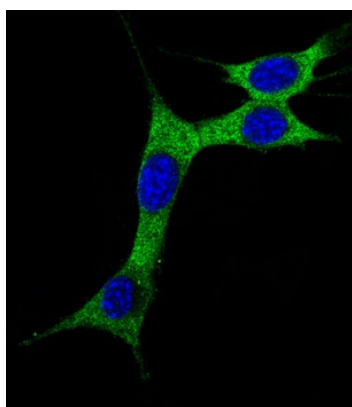
Email: [info@biorbyt.com](mailto:info@biorbyt.com), [support@biorbyt.com](mailto:support@biorbyt.com)  
Phone: [+1 \(415\) 906-5211](tel:+1(415)906-5211) | Fax: [+1 \(415\) 651-8558](tel:+1(415)651-8558)



Western blot analysis of lysates from A431 cell line, untreated or treated with chloroquine, 100ng/ml, using Cleaved-APG8a (MAP1LC3A) (upper) or Beta-actin (lower).



Western blot analysis of lysates from A431 cell line, untreated or treated with chloroquine, 100ng/ml, using Cleaved-APG8a (MAP1LC3A) Antibody (upper) or Beta-actin (lower).



Immunofluorescent analysis of 4% paraformaldehyde-fixed, 0.1% Triton X-100 permeabilized NIH/3T3 (Mouse mouse embryonic fibroblasts cell line) cells labeling MAP1LC3A at 1/25 dilution, followed by Alexa Fluor 488-conjugated goat anti-rabbit IgG secondary antibody at 1/400 dilution (green). The nuclear counter stain is DAPI (blue). Immunofluorescence image showing cytoplasm on NIH/3T3 cell line.

**Biorbyt Ltd.**

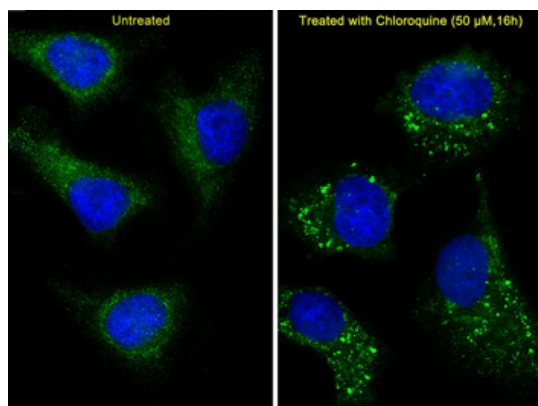
7 Signet Court, Swann Road  
Cambridge  
CB5 8LA  
United Kingdom

Email: [info@biorbyt.com](mailto:info@biorbyt.com), [support@biorbyt.com](mailto:support@biorbyt.com)  
Phone: +44 (0)1223 859353 | Fax: +1 (415) 651-8558

**Biorbyt LLC**

68 TW Alexander Drive  
Research Triangle Park  
Durham  
NC 27713  
United States

Email: [info@biorbyt.com](mailto:info@biorbyt.com), [support@biorbyt.com](mailto:support@biorbyt.com)  
Phone: +1 (415) 906-5211 | Fax: +1 (415) 651-8558



Immunofluorescent analysis of 4% paraformaldehyde-fixed, 0.1% Triton X-100 permeabilized HeLa (Human Cervical epithelial adenocarcinoma cell line) cells labeling MAP1LC3A at 1/25 dilution, followed by Alexa Fluor 488-conjugated goat anti-rabbit IgG secondary antibody at 1/400 dilution (green). Immunofluorescence image showing vesicles staining on HeLa cell line. The nuclear counter stain is DAPI (blue). The right image is HeLa cells treated with Chloroquine 50 $\mu$ M for 16 h.

**Biorbyt Ltd.**

7 Signet Court, Swann Road  
Cambridge  
CB5 8LA  
United Kingdom

Email: [info@biorbyt.com](mailto:info@biorbyt.com), [support@biorbyt.com](mailto:support@biorbyt.com)

Phone: [+44 \(0\)1223 859353](tel:+44(0)1223859353) | Fax: [+1 \(415\) 651-8558](tel:+1(415)651-8558)

**Biorbyt LLC**

68 TW Alexander Drive  
Research Triangle Park  
Durham  
NC 27713  
United States

Email: [info@biorbyt.com](mailto:info@biorbyt.com), [support@biorbyt.com](mailto:support@biorbyt.com)

Phone: [+1 \(415\) 906-5211](tel:+1(415)906-5211) | Fax: [+1 \(415\) 651-8558](tel:+1(415)651-8558)