

Product Datasheet

IGF2BP1 Rabbit Polyclonal Antibody (orb330140)

Catalog Number	orb330140
Category	Antibodies
Description	Rabbit polyclonal antibody to IGF2BP1
Target	IGF2BP1
Clonality	Polyclonal
Species/Host	Rabbit
Conjugation	Unconjugated
Reactivity	Human, Rat
Predicted Reactivity	Bovine, Canine, Equine, Guinea pig, Mouse, Porcine, Rabbit, Sheep
Form/Appearance	Liquid. Purified antibody supplied in 1x PBS buffer with 0.09% (w/v) sodium azide and 2% sucrose.
Concentration	0.5 mg/ml
Buffer/Preservatives	Liquid. Purified antibody supplied in 1x PBS buffer with 0.09% (w/v) sodium azide and 2% sucrose.
Purification	Affinity Purified
Immunogen	The immunogen is a synthetic peptide directed towards the N terminal region of human IGF2BP1
Protein Sequence	Synthetic peptide located within the following region: PDEQIAQGPENGRRRGGFGSRGQPRQGSPVAAGAPAKQQQVDIPLRLLVPT
UniProt ID	Q9NZI8

Biorbyt Ltd.

7 Signet Court, Swann Road
Cambridge
CB5 8LA
United Kingdom

Email: info@biorbyt.com, support@biorbyt.com

Phone: [+44 \(0\)1223 859353](tel:+44(0)1223859353) | Fax: [+1 \(415\) 651-8558](tel:+1(415)651-8558)

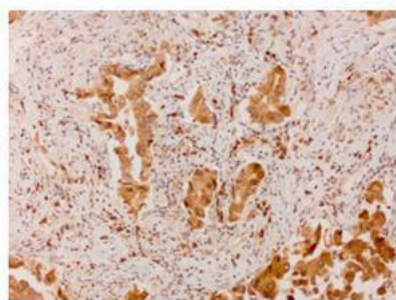
Biorbyt LLC

68 TW Alexander Drive
Research Triangle Park
Durham
NC 27713
United States

Email: info@biorbyt.com, support@biorbyt.com

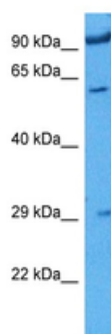
Phone: [+1 \(415\) 906-5211](tel:+1(415)906-5211) | Fax: [+1 \(415\) 651-8558](tel:+1(415)651-8558)

MW	63kDa
Tested applications	IHC, WB
Storage	Maintain refrigerated at 2-8°C for up to 2 weeks. For long term storage store at -20°C in small aliquots to prevent freeze-thaw cycles.
Note	For research use only
NCBI	NP_006537
Expiration Date	12 months from date of receipt.

IGFBP1

Brown: IGFBP1 Blue: Nuclei

Sample Type: Human lung adenocarcinoma, Primary Antibody Dilution: 1:300, Secondary Antibody: Anti-rabbit-linker, Fbex-HRP, Secondary Antibody Dilution: NOT FOUND, Color/Signal Descriptions: Brown: IGFBP1 Blue: Nuclei, Gene Name: IGF2BP1.



Host: Rabbit
Target Name: Igf2Bp1
Sample Type: Rat Skeletal Muscle Lysate
Antibody Dilution: 1.0µg/ml

Sample Tissue: Rat Skeletal Muscle, Antibody Dilution: 1 ug/mL.

Biorbyt Ltd.

7 Signet Court, Swann Road
Cambridge
CB5 8LA
United Kingdom

Email: info@biorbyt.com, support@biorbyt.com

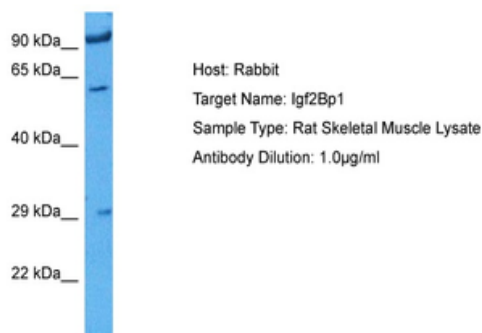
Phone: +44 (0)1223 859353 | Fax: +1 (415) 651-8558

Biorbyt LLC

68 TW Alexander Drive
Research Triangle Park
Durham
NC 27713
United States

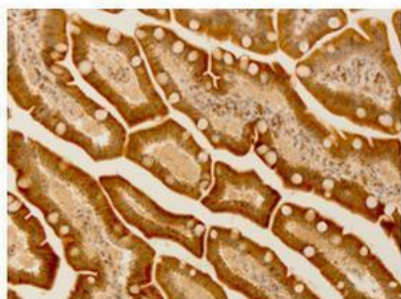
Email: info@biorbyt.com, support@biorbyt.com

Phone: +1 (415) 906-5211 | Fax: +1 (415) 651-8558



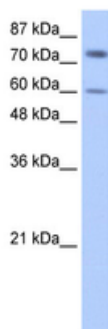
Sample Tissue: Rat Skeletal Muscle, Antibody Dilution: 1 ug/mL.

IGFBP1



Brown: IGFBP1 Blue: Nuclei

Application: IHC, Species+tissue/cell type: Human lung adenocarcinoma, Primary antibody Dilution: 1:300, Secondary antibody: Anti-rabbit-linker, Fbex-HRP, Secondary antibody Dilution: NOT FOUND.



WB Suggested Anti-IGF2BP1 Antibody Titration: 0.2-1 ug/mL, ELISA Titer: 1:12500, Positive Control: HepG2 cell lysate.

Biorbyt Ltd.

7 Signet Court, Swann Road
Cambridge
CB5 8LA
United Kingdom

Email: info@biorbyt.com, support@biorbyt.com

Phone: +44 (0)1223 859353 | Fax: +1 (415) 651-8558

Biorbyt LLC

68 TW Alexander Drive
Research Triangle Park
Durham
NC 27713
United States

Email: info@biorbyt.com, support@biorbyt.com

Phone: +1 (415) 906-5211 | Fax: +1 (415) 651-8558