

## Product Datasheet

### ACO1 Rabbit Polyclonal Antibody (orb330127)

<b>Catalog Number</b>	orb330127
<b>Category</b>	Antibodies
<b>Description</b>	Rabbit polyclonal antibody to ACO1
<b>Target</b>	ACO1
<b>Clonality</b>	Polyclonal
<b>Species/Host</b>	Rabbit
<b>Conjugation</b>	Unconjugated
<b>Reactivity</b>	Human, Mouse
<b>Predicted Reactivity</b>	Bovine, Canine, Equine, Guinea pig, Porcine, Rabbit, Rat
<b>Form/Appearance</b>	Liquid. Purified antibody supplied in 1x PBS buffer with 0.09% (w/v) sodium azide and 2% sucrose.
<b>Concentration</b>	0.5 mg/ml
<b>Buffer/Preservatives</b>	Liquid. Purified antibody supplied in 1x PBS buffer with 0.09% (w/v) sodium azide and 2% sucrose.
<b>Purification</b>	Affinity Purified
<b>Immunogen</b>	The immunogen is a synthetic peptide directed towards the N terminal region of human ACO1
<b>Protein Sequence</b>	Synthetic peptide located within the following region: MSNPFAHLAEPLDPVQPGKKFFNLNKLEDSRYGRLPFSIRVLLAAIRNC
<b>UniProt ID</b>	<b>P28271</b>

**Biorbyt Ltd.**

7 Signet Court, Swann Road  
Cambridge  
CB5 8LA  
United Kingdom

Email: [info@biorbyt.com](mailto:info@biorbyt.com), [support@biorbyt.com](mailto:support@biorbyt.com)

Phone: [+44 \(0\)1223 859353](tel:+44(0)1223859353) | Fax: [+1 \(415\) 651-8558](tel:+1(415)651-8558)

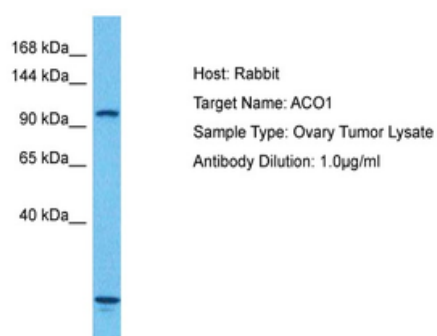
**Biorbyt LLC**

68 TW Alexander Drive  
Research Triangle Park  
Durham  
NC 27713  
United States

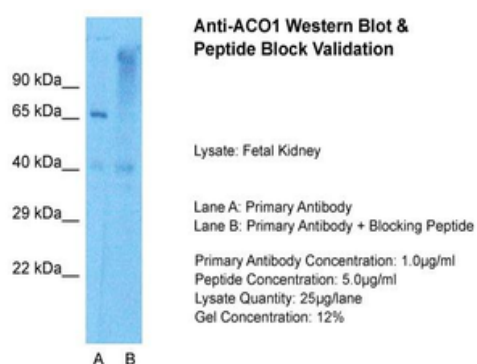
Email: [info@biorbyt.com](mailto:info@biorbyt.com), [support@biorbyt.com](mailto:support@biorbyt.com)

Phone: [+1 \(415\) 906-5211](tel:+1(415)906-5211) | Fax: [+1 \(415\) 651-8558](tel:+1(415)651-8558)

<b>MW</b>	98kDa
<b>Tested applications</b>	IHC, WB
<b>Storage</b>	Maintain refrigerated at 2-8°C for up to 2 weeks. For long term storage store at -20°C in small aliquots to prevent freeze-thaw cycles.
<b>Note</b>	For research use only
<b>NCBI</b>	<b>NP_002188</b>
<b>Expiration Date</b>	12 months from date of receipt.



Sample Tissue: Human Ovary Tumor, Antibody Dilution: 1 ug/mL.



Sample Type: Fetal Kidney, Lane A: Primary Antibody, Lane B: Primary Antibody + Blocking Peptide, Primary Antibody Concentration: 1 ug/mL, Peptide Concentration: 5 ug/mL, Lysate Quantity: 25 ug/lane/Lane, Gel Concentration: 0.12.

### Biorbyt Ltd.

7 Signet Court, Swann Road  
Cambridge  
CB5 8LA  
United Kingdom

Email: [info@biorbyt.com](mailto:info@biorbyt.com), [support@biorbyt.com](mailto:support@biorbyt.com)

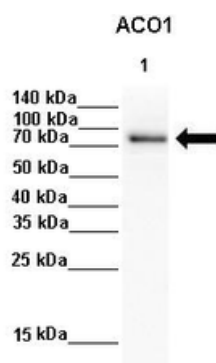
Phone: +44 (0)1223 859353 | Fax: +1 (415) 651-8558

### Biorbyt LLC

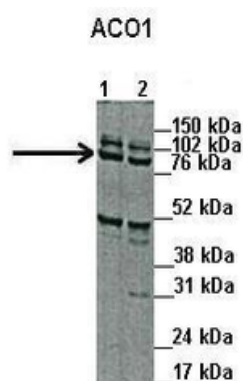
68 TW Alexander Drive  
Research Triangle Park  
Durham  
NC 27713  
United States

Email: [info@biorbyt.com](mailto:info@biorbyt.com), [support@biorbyt.com](mailto:support@biorbyt.com)

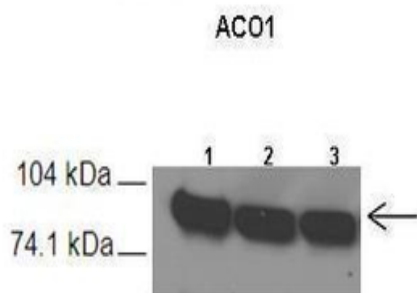
Phone: +1 (415) 906-5211 | Fax: +1 (415) 651-8558



Lane 1: 100 ug HePG2 lysate, Primary Antibody Dilution: 1:1000, Secondary Antibody: Goat anti rabbit-HRP, Secondary Antibody Dilution: 1:8000, Gene Name: ACO1.



Lanes: 1. 45 ug capan1 cell lysate, 2. 45 ug HPAF cell lysate, Primary Antibody Dilution: 1:1000, Secondary Antibody: Anti-Rabbit HRP, Secondary Antibody Dilution: 1:5000, Gene Name: ACO1.



Lanes: 1. 60 ug mouse liver extract 2. 60 ug mouse liver extract 3. 60 ug mouse liver extract, Primary Antibody Dilution: 1:500, Secondary Antibody: Anti-rabbit HRP, Secondary Antibody Dilution: 1:3000, Gene Name: ACO1.

#### Biorbyt Ltd.

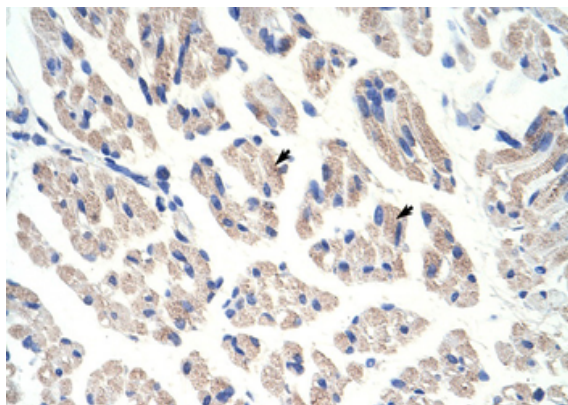
7 Signet Court, Swann Road  
Cambridge  
CB5 8LA  
United Kingdom

Email: [info@biorbyt.com](mailto:info@biorbyt.com), [support@biorbyt.com](mailto:support@biorbyt.com)  
Phone: +44 (0)1223 859353 | Fax: +1 (415) 651-8558

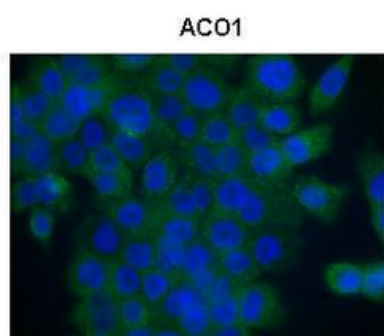
#### Biorbyt LLC

68 TW Alexander Drive  
Research Triangle Park  
Durham  
NC 27713  
United States

Email: [info@biorbyt.com](mailto:info@biorbyt.com), [support@biorbyt.com](mailto:support@biorbyt.com)  
Phone: +1 (415) 906-5211 | Fax: +1 (415) 651-8558

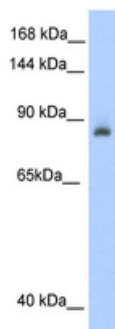


Rabbit Anti-ACO1 Antibody, Paraffin Embedded Tissue: Human Muscle, Cellular Data: Skeletal muscle cells, Antibody Concentration: 4.0-8.0 ug/mL, Magnification: 400X.



Green: ACO1  
Blue: DAPI

Sample Type: Human Capan1 cells (Pancreatic cancer cell line), Primary Antibody Dilution: 1:300, Secondary Antibody: Anti-rabbit-AlexaFluor-488, Secondary Antibody Dilution: 1:200, Color/Signal Descriptions: ACO1: Green DAPI: Blue, Gene Name: ACO1.



WB Suggested Anti-ACO1 Antibody Titration: 0.2-1 ug/mL, ELISA Titer: 1:62500, Positive Control: Human kidney.

**Biorbyt Ltd.**

7 Signet Court, Swann Road  
Cambridge  
CB5 8LA  
United Kingdom

Email: [info@biorbyt.com](mailto:info@biorbyt.com), [support@biorbyt.com](mailto:support@biorbyt.com)

Phone: +44 (0)1223 859353 | Fax: +1 (415) 651-8558

**Biorbyt LLC**

68 TW Alexander Drive  
Research Triangle Park  
Durham  
NC 27713  
United States

Email: [info@biorbyt.com](mailto:info@biorbyt.com), [support@biorbyt.com](mailto:support@biorbyt.com)

Phone: +1 (415) 906-5211 | Fax: +1 (415) 651-8558