

Product Datasheet

PPARGC1A Rabbit Polyclonal Antibody (orb330034)

Catalog Number	orb330034
Category	Antibodies
Description	Rabbit polyclonal antibody to PPARGC1A
Target	PPARGC1A
Clonality	Polyclonal
Species/Host	Rabbit
Conjugation	Unconjugated
Reactivity	Human
Predicted Reactivity	Bovine, Canine, Equine, Goat, Guinea pig, Mouse, Rabbit, Rat, Zebrafish
Form/Appearance	Liquid. Purified antibody supplied in 1x PBS buffer with 0.09% (w/v) sodium azide and 2% sucrose.
Concentration	0.5 mg/ml
Buffer/Preservatives	Liquid. Purified antibody supplied in 1x PBS buffer with 0.09% (w/v) sodium azide and 2% sucrose.
Purification	Affinity Purified
Immunogen	The immunogen is a synthetic peptide directed towards the N terminal region of human PPARGC1A
Protein Sequence	Synthetic peptide located within the following region: MAWDMCNQDSESVWSDIECAALVGEDQPLCPDLPELDLSELDVNDLDTDS

Biorbyt Ltd.

7 Signet Court, Swann Road
Cambridge
CB5 8LA
United Kingdom

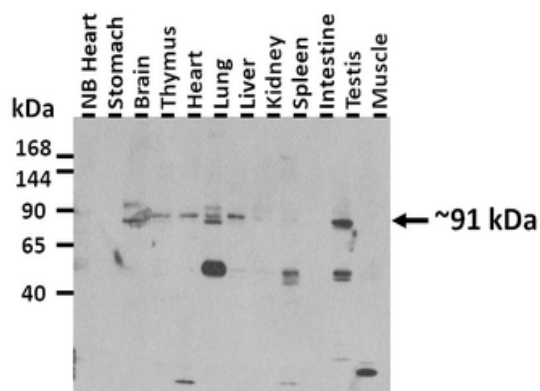
Email: info@biorbyt.com, support@biorbyt.com
Phone: [+44 \(0\)1223 859353](tel:+44(0)1223859353) | Fax: [+1 \(415\) 651-8558](tel:+1(415)651-8558)

Biorbyt LLC

68 TW Alexander Drive
Research Triangle Park
Durham
NC 27713
United States

Email: info@biorbyt.com, support@biorbyt.com
Phone: [+1 \(415\) 906-5211](tel:+1(415)906-5211) | Fax: [+1 \(415\) 651-8558](tel:+1(415)651-8558)

UniProt ID	Q9UBK2
MW	91 kDa
Tested applications	WB
Storage	Maintain refrigerated at 2-8°C for up to 2 weeks. For long term storage store at -20°C in small aliquots to prevent freeze-thaw cycles.
Note	For research use only
NCBI	NP_037393
Expiration Date	12 months from date of receipt.



25 ug of the indicated Mouse whole cell extracts was loaded onto a 6-18% SDS-PAGE gel. 3 ug/mL of the antibody was used in this experiment. Recommended dilution for antibody is 1-3 ug/mL.



Lanes: Lane 1: 30 ug Human liver, Lane 2: 30 ug Rat liver, Lane 3: 30 ug Mouse (wild-type) liver, Lane 4: 30 ug Mouse [AMPK alpha 1/2(-/-)] liver, Lane 5: 30 ug Human muscle, Lane 6: 30 ug Rat muscle, Lane 7: 30 ug Mouse muscle, Primary Antibody Dilution: 1:1000, Secondary Antibody Dilution: 1:10000, Gene Name: PPARGC1A.

Biorbyt Ltd.

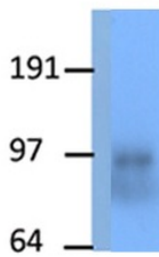
7 Signet Court, Swann Road
Cambridge
CB5 8LA
United Kingdom

Email: info@biorbyt.com, support@biorbyt.com
Phone: +44 (0)1223 859353 | Fax: +1 (415) 651-8558

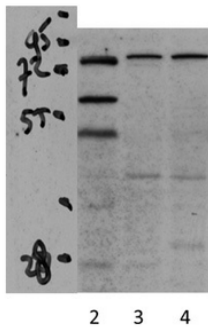
Biorbyt LLC

68 TW Alexander Drive
Research Triangle Park
Durham
NC 27713
United States

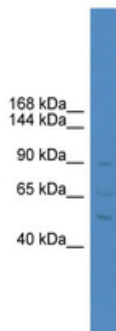
Email: info@biorbyt.com, support@biorbyt.com
Phone: +1 (415) 906-5211 | Fax: +1 (415) 651-8558



PPARGC1A antibody - N-terminal region (orb330034) validated by WB using Transfected Melanoma Cell at 1:1000.



PPARGC1A antibody - N-terminal region (orb330034) validated by WB using transfected SH-SY5Y lysate at 1:15000.



WB Suggested Anti-PPARGC1A Antibody Titration: 0.2-1 ug/mL, ELISA Titer: 1:312500, Positive Control: ACHN cell lysate.

Biorbyt Ltd.

7 Signet Court, Swann Road
Cambridge
CB5 8LA
United Kingdom

Email: info@biorbyt.com, support@biorbyt.com

Phone: +44 (0)1223 859353 | Fax: +1 (415) 651-8558

Biorbyt LLC

68 TW Alexander Drive
Research Triangle Park
Durham
NC 27713
United States

Email: info@biorbyt.com, support@biorbyt.com

Phone: +1 (415) 906-5211 | Fax: +1 (415) 651-8558