

Product Datasheet

KCNN2 Rabbit Polyclonal Antibody (orb329809)

Catalog Number	orb329809
Category	Antibodies
Description	Rabbit polyclonal antibody to KCNN2
Target	KCNN2
Clonality	Polyclonal
Species/Host	Rabbit
Conjugation	Unconjugated
Reactivity	Human, Monkey, Rat
Predicted Reactivity	Bovine, Canine, Equine, Guinea pig, Mouse, Rabbit, Yeast, Zebrafish
Form/Appearance	Liquid. Purified antibody supplied in 1x PBS buffer with 0.09% (w/v) sodium azide and 2% sucrose.
Concentration	1.0 mg/ml
Buffer/Preservatives	Liquid. Purified antibody supplied in 1x PBS buffer with 0.09% (w/v) sodium azide and 2% sucrose.
Purification	Protein A purified
Immunogen	The immunogen is a synthetic peptide directed towards the C terminal region of human KCNN2
Protein Sequence	Synthetic peptide located within the following region: IDHAKVRKHQRKFLQAIHQRLRSVKMEQRKLNDQANTLVDLAKTQNIMYDM
UniProt ID	Q9H2S1

Biorbyt Ltd.

7 Signet Court, Swann Road
Cambridge
CB5 8LA
United Kingdom

Email: info@biorbyt.com, support@biorbyt.com

Phone: [+44 \(0\)1223 859353](tel:+44(0)1223859353) | Fax: [+1 \(415\) 651-8558](tel:+1(415)651-8558)

Biorbyt LLC

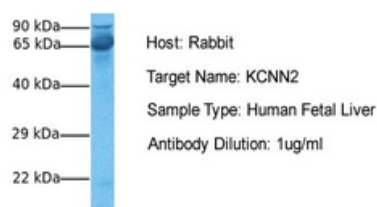
68 TW Alexander Drive
Research Triangle Park
Durham
NC 27713
United States

Email: info@biorbyt.com, support@biorbyt.com

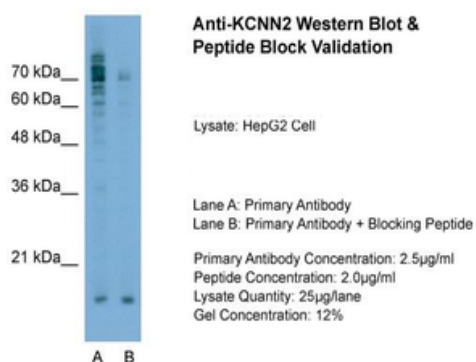
Phone: [+1 \(415\) 906-5211](tel:+1(415)906-5211) | Fax: [+1 \(415\) 651-8558](tel:+1(415)651-8558)

MW	64kDa
Tested applications	IHC, WB
Storage	Maintain refrigerated at 2-8°C for up to 2 weeks. For long term storage store at -20°C in small aliquots to prevent freeze-thaw cycles.
Note	For research use only
NCBI	NP_067627
Expiration Date	12 months from date of receipt.

KCNN2



Sample Tissue: Human Fetal Liver, Antibody Dilution: 1.0 µg/mL.



Sample Type: HepG2, Lane A: Primary Antibody, Lane B: Primary Antibody + Blocking Peptide, Primary Antibody Concentration: 2.5 µg/mL, Peptide Concentration: 2.0 µg/mL, Lysate Quantity: 25 µg/lane, Gel Concentration: 12%.

Biorbyt Ltd.

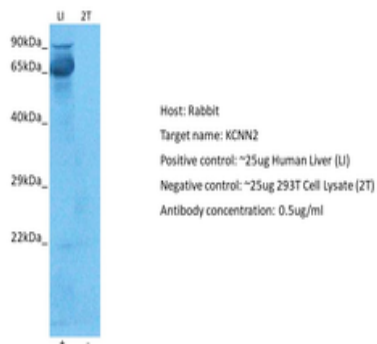
7 Signet Court, Swann Road
Cambridge
CB5 8LA
United Kingdom

Email: info@biorbyt.com, support@biorbyt.com
Phone: +44 (0)1223 859353 | Fax: +1 (415) 651-8558

Biorbyt LLC

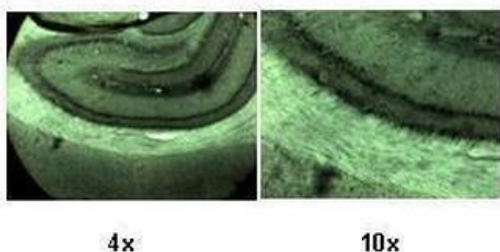
68 TW Alexander Drive
Research Triangle Park
Durham
NC 27713
United States

Email: info@biorbyt.com, support@biorbyt.com
Phone: +1 (415) 906-5211 | Fax: +1 (415) 651-8558



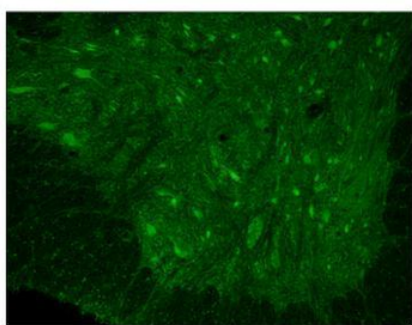
Positive control (+): Human liver (LI), Negative control (-): 293T (2T), Antibody concentration: 0.5 ug/mL.

KCNN2



Lanes: Rat brain section, Primary Antibody Dilution: 1:500, Secondary Antibody: Anti-rabbit-biotin, streptavidin-diaminobenzidine, Secondary Antibody Dilution: 1:500, Gene Name: KCNN2.

KCNN2



Green: KCNN2

Sample Type: Rhesus macaque spinal cord, Primary Antibody Dilution: 1:300, Secondary Antibody: Donkey anti Rabbit 488, Secondary Antibody Dilution: 1:500, Color/Signal Descriptions: Green: KCNN2, Gene Name: KCNN2.

Biorbyt Ltd.

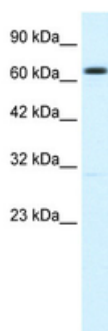
7 Signet Court, Swann Road
Cambridge
CB5 8LA
United Kingdom

Email: info@biorbyt.com, support@biorbyt.com
Phone: [+44 \(0\)1223 859353](tel:+44(0)1223859353) | Fax: [+1 \(415\) 651-8558](tel:+1(415)6518558)

Biorbyt LLC

68 TW Alexander Drive
Research Triangle Park
Durham
NC 27713
United States

Email: info@biorbyt.com, support@biorbyt.com
Phone: [+1 \(415\) 906-5211](tel:+1(415)9065211) | Fax: [+1 \(415\) 651-8558](tel:+1(415)6518558)



WB Suggested Anti-KCNN2 Antibody Titration: 1.25 ug/mL,
ELISA Titer: 1:62500, Positive Control: HepG2 cell lysate.

Biorbyt Ltd.

7 Signet Court, Swann Road
Cambridge
CB5 8LA
United Kingdom

Email: info@biorbyt.com, support@biorbyt.com

Phone: [+44 \(0\)1223 859353](tel:+44(0)1223859353) | Fax: [+1 \(415\) 651-8558](tel:+1(415)651-8558)

Biorbyt LLC

68 TW Alexander Drive
Research Triangle Park
Durham
NC 27713
United States

Email: info@biorbyt.com, support@biorbyt.com

Phone: [+1 \(415\) 906-5211](tel:+1(415)906-5211) | Fax: [+1 \(415\) 651-8558](tel:+1(415)651-8558)