

Product Datasheet

LDHB Rabbit Polyclonal Antibody (orb325389)

Catalog Number	orb325389
Category	Antibodies
Description	Rabbit polyclonal antibody to LDHB
Target	LDHB
Clonality	Polyclonal
Species/Host	Rabbit
Conjugation	Unconjugated
Reactivity	Human
Predicted Reactivity	Bovine, Canine, Equine, Guinea pig, Mouse, Rabbit, Rat, Zebrafish
Form/Appearance	Liquid. Purified antibody supplied in 1x PBS buffer with 0.09% (w/v) sodium azide and 2% sucrose.
Concentration	0.5 mg/ml
Buffer/Preservatives	Liquid. Purified antibody supplied in 1x PBS buffer with 0.09% (w/v) sodium azide and 2% sucrose.
Purification	Affinity Purified
Immunogen	The immunogen is a synthetic peptide directed towards the C-terminal region of Human LDHB
Protein Sequence	Synthetic peptide located within the following region: MYGIENEVFLSLPCILNARGLTSVINQKLKDDEVAQLKKSADTLWDIQKD
UniProt ID	P07195

Biorbyt Ltd.

7 Signet Court, Swann Road
Cambridge
CB5 8LA
United Kingdom

Email: info@biorbyt.com, support@biorbyt.com

Phone: [+44 \(0\)1223 859353](tel:+44(0)1223859353) | Fax: [+1 \(415\) 651-8558](tel:+1(415)651-8558)

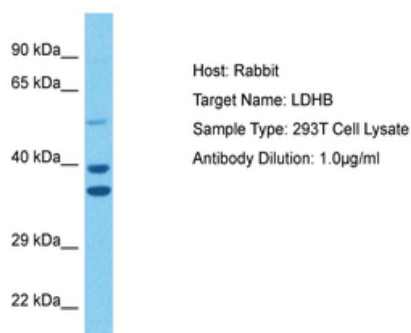
Biorbyt LLC

68 TW Alexander Drive
Research Triangle Park
Durham
NC 27713
United States

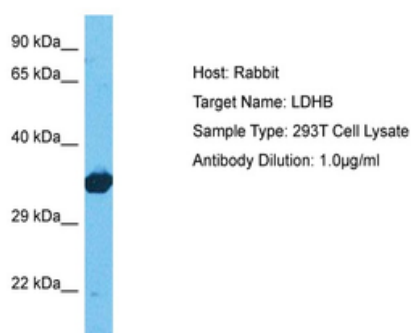
Email: info@biorbyt.com, support@biorbyt.com

Phone: [+1 \(415\) 906-5211](tel:+1(415)906-5211) | Fax: [+1 \(415\) 651-8558](tel:+1(415)651-8558)

MW	37kDa
Tested applications	IHC-P, WB
Storage	Maintain refrigerated at 2-8°C for up to 2 weeks. For long term storage store at -20°C in small aliquots to prevent freeze-thaw cycles.
Note	For research use only
NCBI	NP_002291
Expiration Date	12 months from date of receipt.



Sample Tissue: Human 293T Whole Cell, Antibody Dilution: 1 ug/mL.



Sample Tissue: Human 293T Whole Cell, Antibody Dilution: 1 ug/mL.

Biorbyt Ltd.

7 Signet Court, Swann Road
Cambridge
CB5 8LA
United Kingdom

Email: info@biorbyt.com, support@biorbyt.com

Phone: +44 (0)1223 859353 | Fax: +1 (415) 651-8558

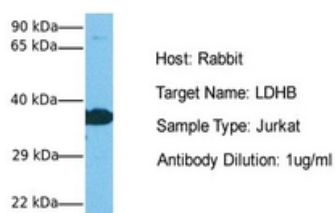
Biorbyt LLC

68 TW Alexander Drive
Research Triangle Park
Durham
NC 27713
United States

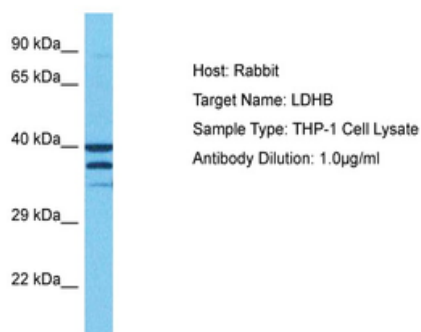
Email: info@biorbyt.com, support@biorbyt.com

Phone: +1 (415) 906-5211 | Fax: +1 (415) 651-8558

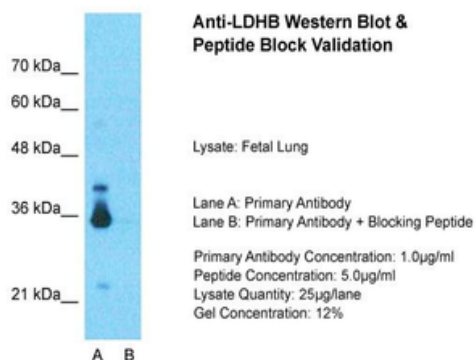
LDHB



Sample Tissue: Human Jurkat, Antibody Dilution: 1.0 ug/mL.



Sample Tissue: Human THP-1 Whole Cell, Antibody Dilution: 1 ug/mL.



Sample Type: Human Fetal Lung, Lane A: Primary Antibody, Lane B: Primary Antibody + Blocking Peptide, Primary Antibody Concentration: 1 ug/mL, Peptide Concentration: 5 ug/mL, Lysate Quantity: 25 ug/lane/lane, Gel Concentration: 0.12.

Biorbyt Ltd.

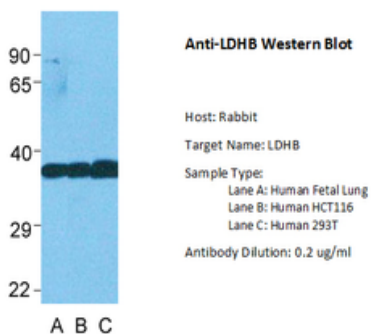
7 Signet Court, Swann Road
Cambridge
CB5 8LA
United Kingdom

Email: info@biorbyt.com, support@biorbyt.com
Phone: +44 (0)1223 859353 | Fax: +1 (415) 651-8558

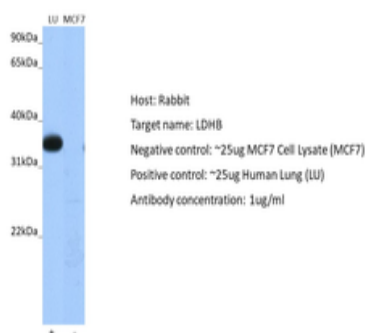
Biorbyt LLC

68 TW Alexander Drive
Research Triangle Park
Durham
NC 27713
United States

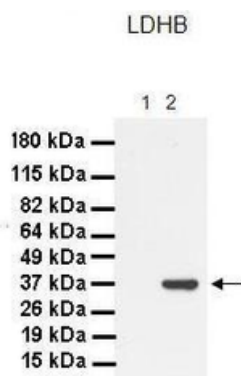
Email: info@biorbyt.com, support@biorbyt.com
Phone: +1 (415) 906-5211 | Fax: +1 (415) 651-8558



Sample Type: Lane A: Human Fetal Lung, Lane B: Human HCT116, Lane C: Human 293T, Antibody Dilution: 0.2 ug/mL.



Positive control (+): Human lung (LU), Negative control (-): MCF7 (N10), Antibody concentration: 1 ug/mL.



Lanes: 1. 30 ug MiaPaca-2 cell lysate, 2. 30 ug Panc-1 cell lysate, Primary Antibody Dilution: 1:1000, Secondary Antibody: Goat anti-Rabbit HRP, Secondary Antibody Dilution: 1:4000, Gene Name: LDHB.

Biorbyt Ltd.

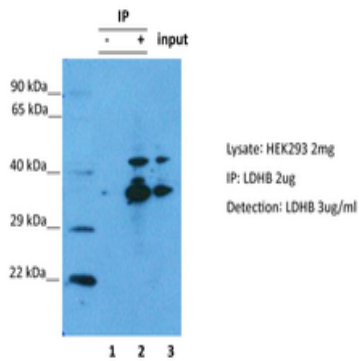
7 Signet Court, Swann Road
 Cambridge
 CB5 8LA
 United Kingdom

Email: info@biorbyt.com, support@biorbyt.com
 Phone: +44 (0)1223 859353 | Fax: +1 (415) 651-8558

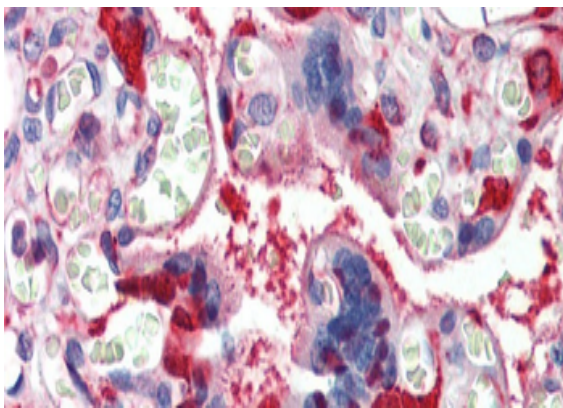
Biorbyt LLC

68 TW Alexander Drive
 Research Triangle Park
 Durham
 NC 27713
 United States

Email: info@biorbyt.com, support@biorbyt.com
 Phone: +1 (415) 906-5211 | Fax: +1 (415) 651-8558

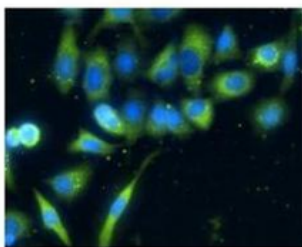


LDHB was immunoprecipitated from 2 mg HEK293 Whole Cell Lysate with orb325389 with 1:200 dilution. Western blot was performed using orb325389 at 1/1000 dilution, Lane 1: Control IP in HEK293 Whole Cell Lysate, Lane 2: LDHB IP with orb325389 in HEK293 Whole Cell Lysate, Lane 3: Input of HEK293 Whole Cell Lysate.



Rabbit Anti-LDHB Antibody, Paraffin Embedded Tissue: Human Placenta, Antibody Concentration: 5 ug/mL.

LDHB



Green : LDHB
Blue: DAPI

Application: IHC, Species+tissue/cell type: Human lung adenocarcinoma cell line A549, Primary antibody Dilution: 1:100, Secondary antibody: Goat anti-rabbit AlexaFluor 488, Secondary antibody Dilution: 1:400.

Biorbyt Ltd.

7 Signet Court, Swann Road
Cambridge
CB5 8LA
United Kingdom

Email: info@biorbyt.com, support@biorbyt.com

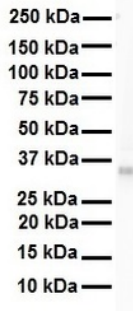
Phone: +44 (0)1223 859353 | Fax: +1 (415) 651-8558

Biorbyt LLC

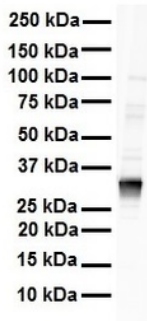
68 TW Alexander Drive
Research Triangle Park
Durham
NC 27713
United States

Email: info@biorbyt.com, support@biorbyt.com

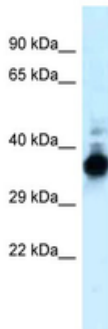
Phone: +1 (415) 906-5211 | Fax: +1 (415) 651-8558



WB Suggested Anti-LDHB antibody Titration: 1 ug/mL, Sample Type: Human 721_B.



WB Suggested Anti-LDHB antibody Titration: 1 ug/mL, Sample Type: Human Raji.



WB Suggested Anti-LDHB Antibody, Titration: 1 ug/mL, Positive Control: 721_B Whole Cell, LDHB is strongly supported by BioGPS gene expression data to be expressed in Human 721_B cells.

Biorbyt Ltd.

7 Signet Court, Swann Road
Cambridge
CB5 8LA
United Kingdom

Email: info@biorbyt.com, support@biorbyt.com

Phone: +44 (0)1223 859353 | Fax: +1 (415) 651-8558

Biorbyt LLC

68 TW Alexander Drive
Research Triangle Park
Durham
NC 27713
United States

Email: info@biorbyt.com, support@biorbyt.com

Phone: +1 (415) 906-5211 | Fax: +1 (415) 651-8558