

Product Datasheet

GOLGB1 Rabbit Polyclonal Antibody (orb325275)

Catalog Number	orb325275
Category	Antibodies
Description	Rabbit polyclonal antibody to GOLGB1
Target	GOLGB1
Clonality	Polyclonal
Species/Host	Rabbit
Conjugation	Unconjugated
Reactivity	Human
Predicted Reactivity	Bovine, Canine, Equine, Mouse, Porcine, Rabbit, Rat
Form/Appearance	Liquid. Purified antibody supplied in 1x PBS buffer with 0.09% (w/v) sodium azide and 2% sucrose.
Concentration	0.5 mg/ml
Buffer/Preservatives	Liquid. Purified antibody supplied in 1x PBS buffer with 0.09% (w/v) sodium azide and 2% sucrose.
Purification	Affinity Purified
Immunogen	The immunogen is a synthetic peptide directed towards the N terminal region of human GOLGB1
Protein Sequence	Synthetic peptide located within the following region: NKYIEEMKAQGGTVLPTEPQSEEQLSKHDKSSTEEEMEIEKIKHKLQEKE
UniProt ID	Q14789

Biorbyt Ltd.

7 Signet Court, Swann Road
Cambridge
CB5 8LA
United Kingdom

Email: info@biorbyt.com, support@biorbyt.com

Phone: [+44 \(0\)1223 859353](tel:+44(0)1223859353) | Fax: [+1 \(415\) 651-8558](tel:+1(415)651-8558)

Biorbyt LLC

68 TW Alexander Drive
Research Triangle Park
Durham
NC 27713-2847
United States

Email: info@biorbyt.com, support@biorbyt.com

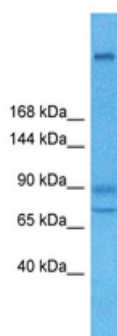
Phone: [+1 \(415\) 906-5211](tel:+1(415)906-5211) | Fax: [+1 \(415\) 651-8558](tel:+1(415)651-8558)

MW	376 kDa
Tested applications	IHC, WB
Storage	Maintain refrigerated at 2-8°C for up to 2 weeks. For long term storage store at -20°C in small aliquots to prevent freeze-thaw cycles.
Note	For research use only
NCBI	NP_004478
Expiration Date	12 months from date of receipt.



Host: Rabbit
Target Name: GOLGB1
Sample Type: 786-0 Cell Lysate
Antibody Dilution: 1.0µg/ml

Sample Tissue: Human 786-0 Whole Cell, Antibody Dilution: 3 ug/mL.



Host: Rabbit
Target Name: GOLGB1
Sample Type: 786-0 Cell Lysate
Antibody Dilution: 1.0µg/ml

Sample Tissue: Human 786-0 Whole Cell, Antibody Dilution: 4 ug/mL.

Biorbyt Ltd.

7 Signet Court, Swann Road
Cambridge
CB5 8LA
United Kingdom

Email: info@biorbyt.com, support@biorbyt.com

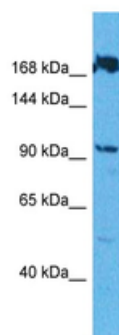
Phone: [+44 \(0\)1223 859353](tel:+44(0)1223859353) | Fax: [+1 \(415\) 651-8558](tel:+1(415)6518558)

Biorbyt LLC

68 TW Alexander Drive
Research Triangle Park
Durham
NC 27713-2847
United States

Email: info@biorbyt.com, support@biorbyt.com

Phone: [+1 \(415\) 906-5211](tel:+1(415)9065211) | Fax: [+1 \(415\) 651-8558](tel:+1(415)6518558)



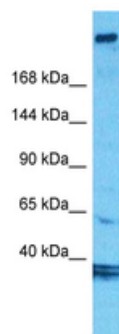
Host: Rabbit
Target Name: GOLGB1
Sample Type: HepG2 Cell Lysate
Antibody Dilution: 1.0µg/ml

Sample Tissue: Human HepG2 Whole Cell, Antibody Dilution: 1 ug/mL.



Host: Rabbit
Target Name: GOLGB1
Sample Type: HepG2 Cell Lysate
Antibody Dilution: 1.0µg/ml

Sample Tissue: Human HepG2 Whole Cell, Antibody Dilution: 1 ug/mL.



Host: Rabbit
Target Name: GOLGB1
Sample Type: PANC1 Cell Lysate
Antibody Dilution: 1.0µg/ml

Sample Tissue: Human PANC1 Whole Cell, Antibody Dilution: 1 ug/mL.

Biorbyt Ltd.

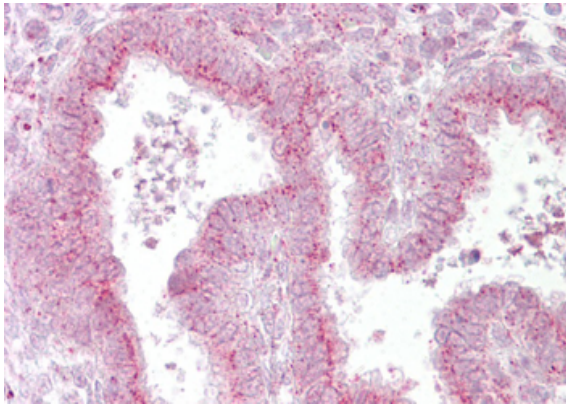
7 Signet Court, Swann Road
Cambridge
CB5 8LA
United Kingdom

Email: info@biorbyt.com, support@biorbyt.com
Phone: [+44 \(0\)1223 859353](tel:+44(0)1223859353) | Fax: [+1 \(415\) 651-8558](tel:+1(415)651-8558)

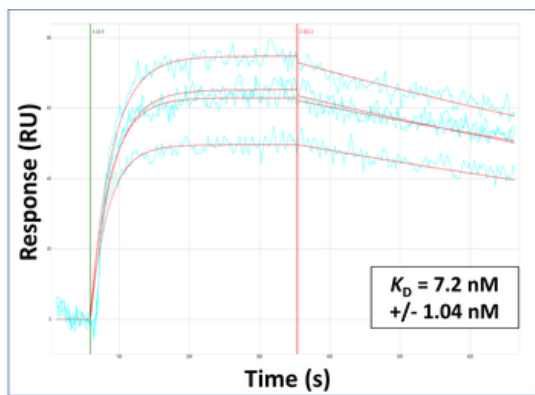
Biorbyt LLC

68 TW Alexander Drive
Research Triangle Park
Durham
NC 27713-2847
United States

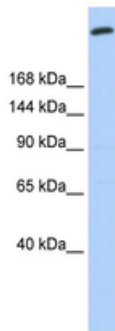
Email: info@biorbyt.com, support@biorbyt.com
Phone: [+1 \(415\) 906-5211](tel:+1(415)906-5211) | Fax: [+1 \(415\) 651-8558](tel:+1(415)651-8558)



Immunohistochemistry (Formalin/PFA-fixed paraffin-embedded sections) analysis of human uterus tissue labelling Giardin with orb325275 at 5 ug/mL.



Surface Plasmon Resonance Kinetic Characterization of Polyclonal Antibody Affinity. Purified polyclonal antibodies were immobilized on a Protein A/G coated Carterra LSA sensor chip (PAGH200M) at concentrations of 5, and 50 ug/mL in duplicate. Antibodies on the surface were exposed to interaction with peptides sequentially via microfluidic controlled flow at 333nM peptide concentration for kinetic characterization of the binders for affinity and specificity, followed by curve fitting using the Kinetics software. K_d determinations for both concentrations were averaged and results and standard deviation are shown.



WB Suggested Anti-GOLGB1 Antibody Titration: 0.2-1 ug/mL, ELISA Titer: 1:12500, Positive Control: 721_B cell lysate, GOLGB1 is supported by BioGPS gene expression data to be expressed in 721_B.

Biorbyt Ltd.

7 Signet Court, Swann Road
Cambridge
CB5 8LA
United Kingdom

Email: info@biorbyt.com, support@biorbyt.com
Phone: +44 (0)1223 859353 | Fax: +1 (415) 651-8558

Biorbyt LLC

68 TW Alexander Drive
Research Triangle Park
Durham
NC 27713-2847
United States

Email: info@biorbyt.com, support@biorbyt.com
Phone: +1 (415) 906-5211 | Fax: +1 (415) 651-8558