

Product Datasheet

EpCAM Rabbit Polyclonal Antibody (orb323292)

Catalog Number	orb323292
Category	Antibodies
Description	EpCAM Rabbit Polyclonal Antibody
Target	EpCAM. Recognizes endogenous levels of EpCAM protein
Clonality	Polyclonal
Species/Host	Rabbit
Isotype	IgG
Conjugation	Unconjugated
Reactivity	Human, Mouse, Rat
Form/Appearance	10 mM PBS, 0.02% sodium azide
Concentration	- 100 µg (in 200 µl): 0.5 mg/ml- 200 µg (in 400 µl): 0.5 mg/ml
Purity	Polyclonal antibodies are purified by peptide affinity chromatography
Immunogen	KLH conjugated synthetic peptide derived from human EpCAM. Please contact us for the exact immunogen sequence. The peptide is available as orb374948.
UniProt ID	O55159, P16422, Q99JW5
MW	35 kDa
Tested applications	ELISA, IHC-P, WB
Dilution range	WB: 1:100-300, IHC-P: 1:100-500 (based on 0.5 mg/ml)

Biorbyt Ltd.

7 Signet Court, Swann Road
Cambridge
CB5 8LA
United Kingdom

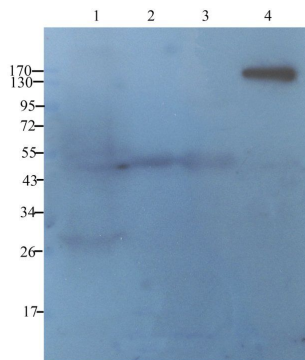
Email: info@biorbyt.com, support@biorbyt.com
Phone: [+44 \(0\)1223 859353](tel:+44(0)1223859353) | Fax: [+1 \(415\) 651-8558](tel:+1(415)651-8558)

Biorbyt LLC

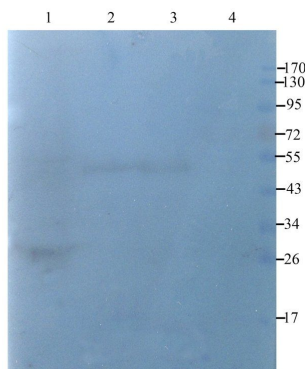
68 TW Alexander Drive
Research Triangle Park
Durham
NC 27713
United States

Email: info@biorbyt.com, support@biorbyt.com
Phone: [+1 \(415\) 906-5211](tel:+1(415)906-5211) | Fax: [+1 \(415\) 651-8558](tel:+1(415)651-8558)

Storage	Maintain refrigerated at 2-8°C for up to 2 weeks. For long term storage store at -20°C in small aliquots to prevent freeze-thaw cycles.
Note	For research use only
Entrez	4072
Expiration Date	12 months from date of receipt.



WB analysis of rat liver (lane 1), human endometrial cancer (lane 2), human breast cancer (lane 3), hela cells (lane 4) using EpCAM antibody (2.5 ug/ml)



Western blot analysis of rat liver (lane 1), human endometrial cancer (lane 2), human breast cancer (lane 3), hela cells (lane 4) using EpCAM antibody (2.5 ug/ml)

Biorbyt Ltd.

7 Signet Court, Swann Road
Cambridge
CB5 8LA
United Kingdom

Email: info@biorbyt.com, support@biorbyt.com

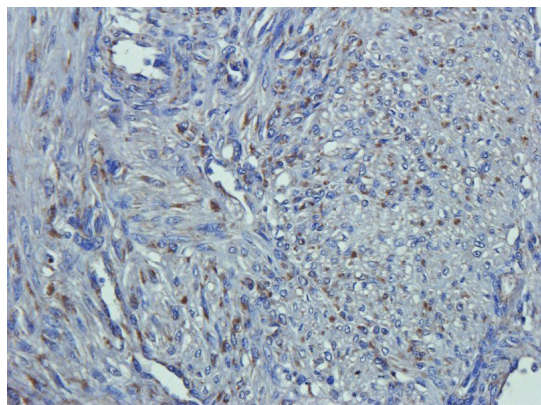
Phone: +44 (0)1223 859353 | Fax: +1 (415) 651-8558

Biorbyt LLC

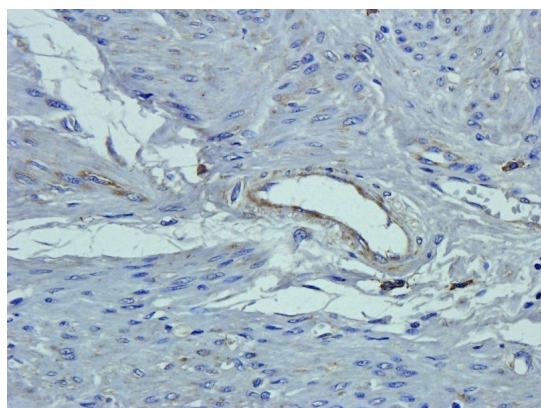
68 TW Alexander Drive
Research Triangle Park
Durham
NC 27713
United States

Email: info@biorbyt.com, support@biorbyt.com

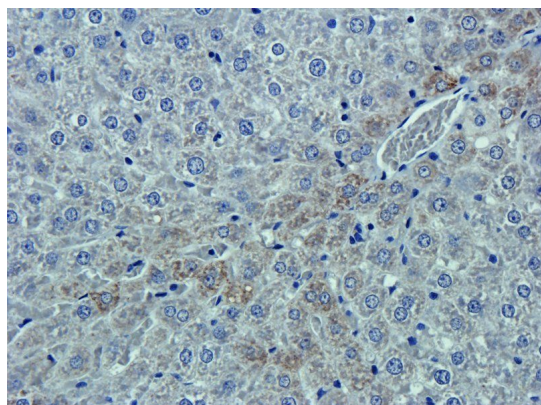
Phone: +1 (415) 906-5211 | Fax: +1 (415) 651-8558



IHC-P staining of human endometrial cancer tissue using EpCAM antibody (2.5 ug/ml)



Immunohistochemical staining of human endometrial cancer tissue using anti-EpCAM (2.5 ug/ml)



Immunohistochemical staining of paraffin embedded rat liver tissue using anti-EpCAM (2.5 ug/ml)

Biorbyt Ltd.

7 Signet Court, Swann Road
Cambridge
CB5 8LA
United Kingdom

Email: info@biorbyt.com, support@biorbyt.com

Phone: [+44 \(0\)1223 859353](tel:+44(0)1223859353) | Fax: [+1 \(415\) 651-8558](tel:+1(415)651-8558)

Biorbyt LLC

68 TW Alexander Drive
Research Triangle Park
Durham
NC 27713
United States

Email: info@biorbyt.com, support@biorbyt.com

Phone: [+1 \(415\) 906-5211](tel:+1(415)906-5211) | Fax: [+1 \(415\) 651-8558](tel:+1(415)651-8558)