

Product Datasheet

Gamma-enolase Mouse Monoclonal Antibody (orb323145)

Catalog Number	orb323145
Category	Antibodies
Description	The Gamma-enolase Antibody is suitable for IHC, WB. It is a Monoclonal, Unconjugated antibody which raised against KLH-conjugated synthetic peptide encompassing a sequence of human Gamma-enolase. The exact sequence is proprietary. Purification: Affinity chromatography
Target	ENO2
Clonality	Monoclonal
Species/Host	Mouse
Conjugation	Unconjugated
Reactivity	Human, Mouse, Rat
Form/Appearance	Liquid
Buffer/Preservatives	0.42% Potassium phosphate, 0.87% Sodium chloride, pH 7.3, 30% glycerol, and 0.01% sodium azide.
Purification	Affinity chromatography
Immunogen	KLH-conjugated synthetic peptide encompassing a sequence of human Gamma-enolase. The exact sequence is proprietary.
UniProt ID	P09104, P07323, P17183
Tested applications	IHC, WB

Biorbyt Ltd.

7 Signet Court, Swann Road
Cambridge
CB5 8LA
United Kingdom

Email: info@biorbyt.com, support@biorbyt.com

Phone: [+44 \(0\)1223 859353](tel:+44(0)1223859353) | Fax: [+1 \(415\) 651-8558](tel:+1(415)651-8558)

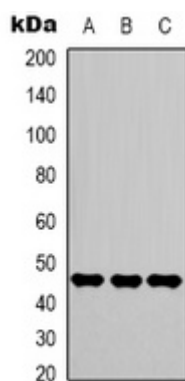
Biorbyt LLC

68 TW Alexander Drive
Research Triangle Park
Durham
NC 27713
United States

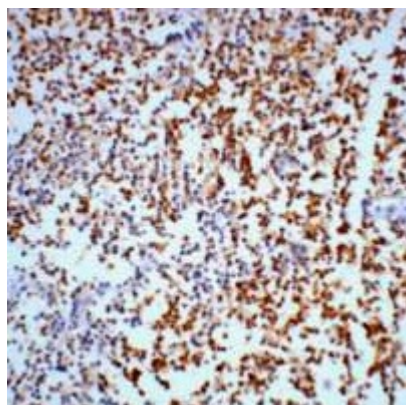
Email: info@biorbyt.com, support@biorbyt.com

Phone: [+1 \(415\) 906-5211](tel:+1(415)906-5211) | Fax: [+1 \(415\) 651-8558](tel:+1(415)651-8558)

Dilution range	WB: 1:1000-1:2000, IHC-P: 1:100-1:200
Specificity	Recognizes endogenous levels of Gamma-enolase protein.
Antibody Type	Primary Antibody
Storage	Maintain refrigerated at 2-8°C for up to 2 weeks. For long term storage store at -20°C in small aliquots to prevent freeze-thaw cycles.
Note	For research use only
Entrez	13807, 100911625, 2026
Expiration Date	12 months from date of receipt.



Western blot analysis of Gamma-enolase expression in HeLa (A), Jurkat (B), 293T (C) whole cell lysates. (Predicted band size: 47 kD; Observed band size: 47 kD)



Immunohistochemical analysis of Gamma-enolase staining in human lung cancer formalin fixed paraffin embedded tissue section. The section was pre-treated using heat mediated antigen retrieval with sodium citrate buffer (pH 6.0). The section was then incubated with the antibody at room temperature and detected using an HRP conjugated compact polymer system. DAB was used as the chromogen. The section was then counterstained with haematoxylin and mounted with DPX.

Biorbyt Ltd.

7 Signet Court, Swann Road
Cambridge
CB5 8LA
United Kingdom

Email: info@biorbyt.com, support@biorbyt.com
Phone: [+44 \(0\)1223 859353](tel:+44(0)1223859353) | Fax: [+1 \(415\) 651-8558](tel:+1(415)651-8558)

Biorbyt LLC

68 TW Alexander Drive
Research Triangle Park
Durham
NC 27713
United States

Email: info@biorbyt.com, support@biorbyt.com
Phone: [+1 \(415\) 906-5211](tel:+1(415)906-5211) | Fax: [+1 \(415\) 651-8558](tel:+1(415)651-8558)