

Product Datasheet

XPNPEP2 Rabbit Polyclonal Antibody (orb319445)

Catalog Number	orb319445
Category	Antibodies
Description	XPNPEP2 Rabbit Polyclonal Antibody is an unconjugated antibody that specifically recognizes XPNPEP2. Recognizes endogenous levels of XPNPEP2 protein. Generated against a KLH conjugated synthetic peptide derived from human XPNPEP2. The peptide is available as orb374931. It is supplied in liquid form and exhibits reactivity with Human, Mouse, Porcine and Rat samples. The suitable applications for this antibody are ELISA, IHC-P and WB.
Target	XPNPEP2. Recognizes endogenous levels of XPNPEP2 protein
Clonality	Polyclonal
Species/Host	Rabbit
Isotype	IgG
Conjugation	Unconjugated
Reactivity	Human, Mouse, Porcine, Rat
Form/Appearance	10 mM PBS, 0.02% sodium azide
Concentration	- 100 µg (in 200 µl): 0.5 mg/ml- 200 µg (in 400 µl): 0.5 mg/ml
Purity	Polyclonal antibodies are purified by peptide affinity chromatography
Immunogen	KLH conjugated synthetic peptide derived from human XPNPEP2. Please contact us for the exact immunogen sequence. The peptide is available as orb374931.
UniProt ID	Q99MA2, B1AVD2, O43895
MW	76 kDa

Biorbyt Ltd.

7 Signet Court, Swann Road
Cambridge
CB5 8LA
United Kingdom

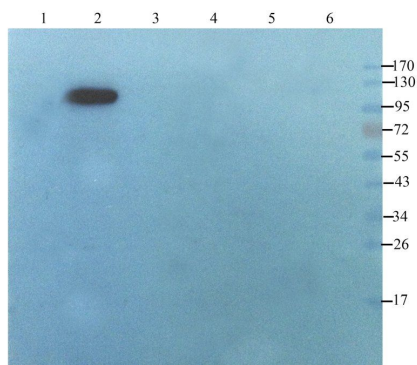
Email: info@biorbyt.com, support@biorbyt.com
Phone: [+44 \(0\)1223 859353](tel:+44(0)1223859353) | Fax: [+1 \(415\) 651-8558](tel:+1(415)651-8558)

Biorbyt LLC

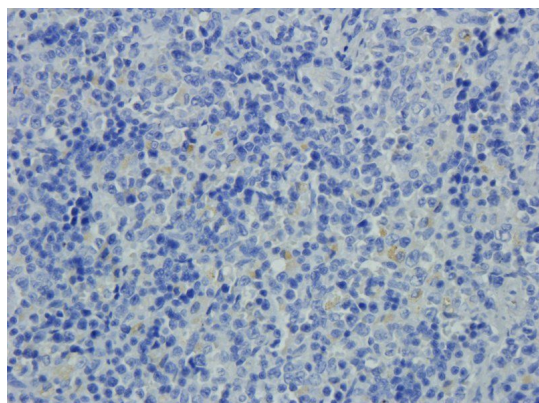
68 TW Alexander Drive
Research Triangle Park
Durham
NC 27713-2847
United States

Email: info@biorbyt.com, support@biorbyt.com
Phone: [+1 \(415\) 906-5211](tel:+1(415)906-5211) | Fax: [+1 \(415\) 651-8558](tel:+1(415)651-8558)

Tested applications	ELISA, IHC-P, WB
Dilution range	IHC-P: 1:100-500 (based on 0.5 mg/ml), WB: 1:100-600
Storage	Maintain refrigerated at 2-8°C for up to 2 weeks. For long term storage store at -20°C in small aliquots to prevent freeze-thaw cycles.
Note	For research use only
Entrez	7512
NCBI	003390
Expiration Date	12 months from date of receipt.



Western blot analysis of rat small intestines (lane 1), rat kidney (lane 2), rat ovary (lane 3), mouse spleen (lane 4), mouse bladder (lane 5), Hela cells (lane 6) using XPNPEP2 antibody (1 ug/ml)



IHC-P staining of rat spleen tissue using XPNPEP2 antibody (2.5 ug/ml)

Biorbyt Ltd.

7 Signet Court, Swann Road
Cambridge
CB5 8LA
United Kingdom

Email: info@biorbyt.com, support@biorbyt.com

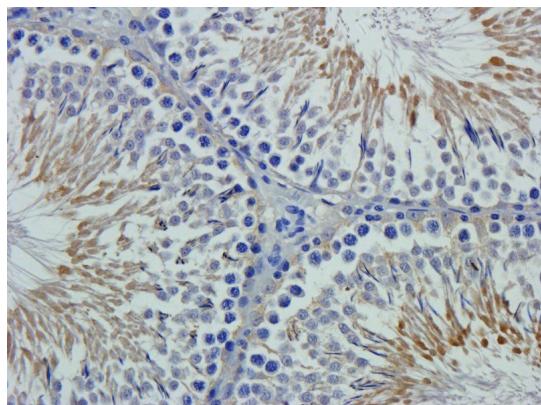
Phone: [+44 \(0\)1223 859353](tel:+44(0)1223859353) | Fax: [+1 \(415\) 651-8558](tel:+1(415)651-8558)

Biorbyt LLC

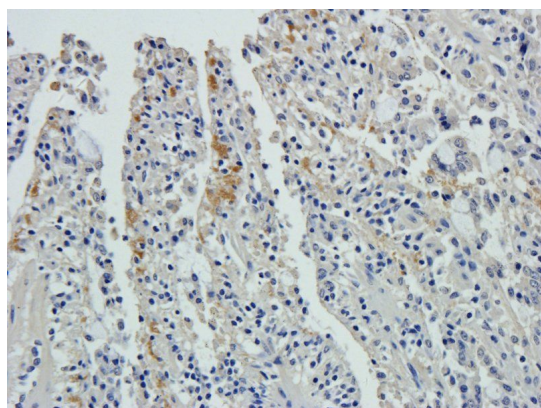
68 TW Alexander Drive
Research Triangle Park
Durham
NC 27713-2847
United States

Email: info@biorbyt.com, support@biorbyt.com

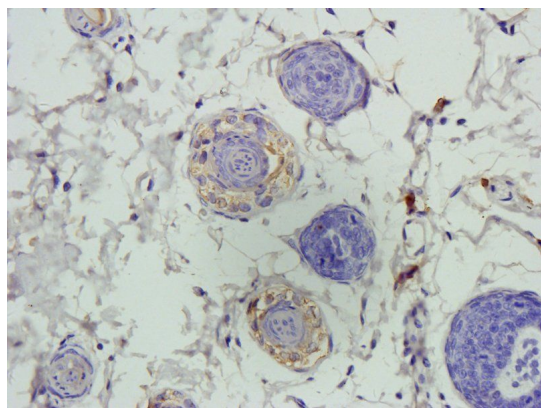
Phone: [+1 \(415\) 906-5211](tel:+1(415)906-5211) | Fax: [+1 \(415\) 651-8558](tel:+1(415)651-8558)



IHC-P staining of rat testis tissue using anti-XPNPEP2 (2.5 ug/ml)



Immunohistochemical staining of paraffin embedded pig small intestines tissue using anti-XPNPEP2 (2.5 ug/ml)



Immunohistochemical staining of rat skin tissue using XPNPEP2 antibody (2.5 ug/ml)

Biorbyt Ltd.

7 Signet Court, Swann Road
Cambridge
CB5 8LA
United Kingdom

Email: info@biorbyt.com, support@biorbyt.com

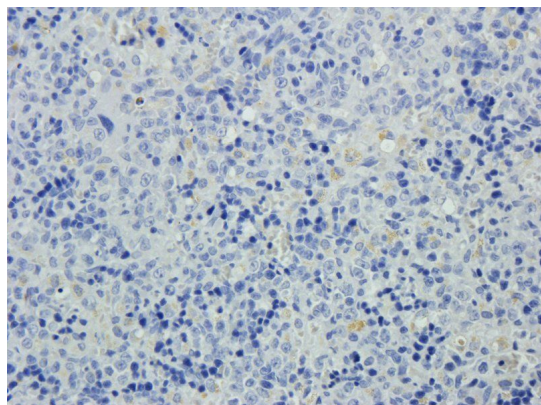
Phone: +44 (0)1223 859353 | Fax: +1 (415) 651-8558

Biorbyt LLC

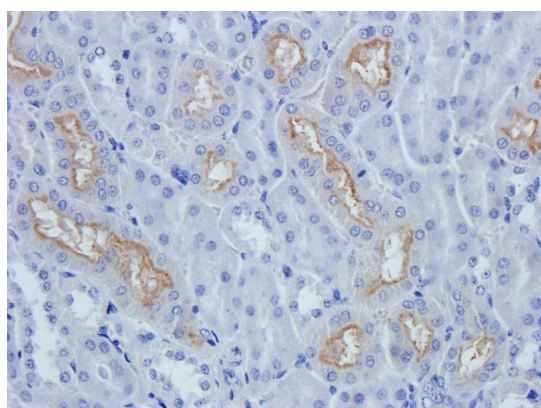
68 TW Alexander Drive
Research Triangle Park
Durham
NC 27713-2847
United States

Email: info@biorbyt.com, support@biorbyt.com

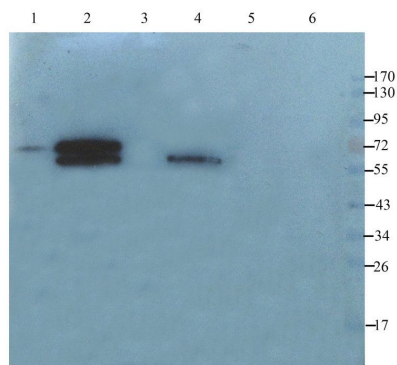
Phone: +1 (415) 906-5211 | Fax: +1 (415) 651-8558



Immunohistochemical staining of paraffin embedded rat spleen tissue using anti-XPNPEP2 (2.5 ug/ml)



IHC-P image of mouse kidney tissue using anti-XPNPEP2 (2.5 ug/ml)



WB analysis of rat small intestines (lane 1), rat kidney (lane 2), rat ovary (lane 3), mouse spleen (lane 4), mouse bladder (lane 5), Hela cells (lane 6) using XPNPEP2 antibody (2 ug/ml)

Biorbyt Ltd.

7 Signet Court, Swann Road
Cambridge
CB5 8LA
United Kingdom

Email: info@biorbyt.com, support@biorbyt.com

Phone: +44 (0)1223 859353 | Fax: +1 (415) 651-8558

Biorbyt LLC

68 TW Alexander Drive
Research Triangle Park
Durham
NC 27713-2847
United States

Email: info@biorbyt.com, support@biorbyt.com

Phone: +1 (415) 906-5211 | Fax: +1 (415) 651-8558