

Product Datasheet

Osteocalcin Rabbit Polyclonal Antibody (orb319442)

| | |
|------------------------|---|
| Catalog Number | orb319442 |
| Category | Antibodies |
| Description | Osteocalcin Rabbit Polyclonal Antibody is an unconjugated antibody that specifically recognizes Osteocalcin. Recognizes endogenous levels of Osteocalcin protein. Generated against a KLH conjugated synthetic peptide derived from human Osteocalcin. The peptide is available as orb374928. It is supplied in liquid form and exhibits reactivity with Human, Mouse and Rat samples. The suitable applications for this antibody are ELISA, IHC-P and WB. |
| Target | Osteocalcin. Recognizes endogenous levels of Osteocalcin protein |
| Clonality | Polyclonal |
| Species/Host | Rabbit |
| Isotype | IgG |
| Conjugation | Unconjugated |
| Reactivity | Human, Mouse, Rat |
| Form/Appearance | 10 mM PBS, 0.02% sodium azide |
| Concentration | - 100 µg (in 200 µl): 0.5 mg/ml- 200 µg (in 400 µl): 0.5 mg/ml |
| Purity | Polyclonal antibodies are purified by peptide affinity chromatography |
| Immunogen | KLH conjugated synthetic peptide derived from human Osteocalcin. Please contact us for the exact immunogen sequence. The peptide is available as orb374928. |

Biorbyt Ltd.

7 Signet Court, Swann Road
Cambridge
CB5 8LA
United Kingdom

Email: info@biorbyt.com, support@biorbyt.com

Phone: [+44 \(0\)1223 859353](tel:+44(0)1223859353) | Fax: [+1 \(415\) 651-8558](tel:+1(415)651-8558)

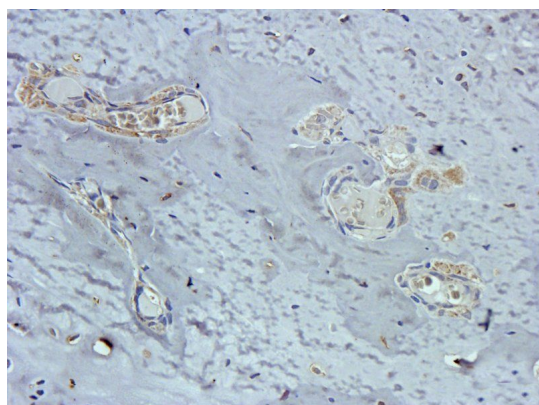
Biorbyt LLC

68 TW Alexander Drive
Research Triangle Park
Durham
NC 27713-2847
United States

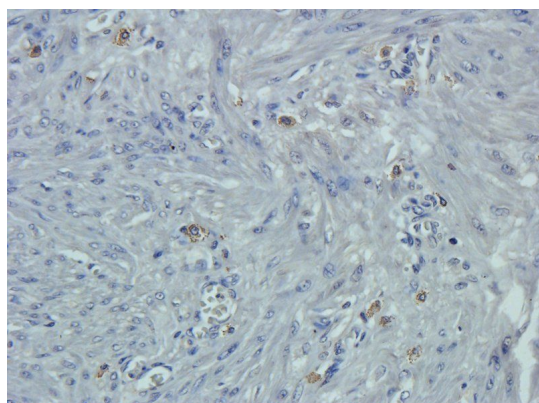
Email: info@biorbyt.com, support@biorbyt.com

Phone: [+1 \(415\) 906-5211](tel:+1(415)906-5211) | Fax: [+1 \(415\) 651-8558](tel:+1(415)651-8558)

| | |
|----------------------------|---|
| MW | 11 kDa |
| Tested applications | ELISA, IHC-P, WB |
| Dilution range | IHC-P: 1:100-300, WB: 1:100-500 (based on 0.5mg/ml) |
| Storage | Maintain refrigerated at 2-8°C for up to 2 weeks. For long term storage store at -20°C in small aliquots to prevent freeze-thaw cycles. |
| Note | For research use only |
| Entrez | 634 |
| NCBI | 001020083, 001024912 |
| Expiration Date | 12 months from date of receipt. |



Immunohistochemical staining of paraffin embedded rat gristle tissue using Osteocalcin antibody (2.5 ug/ml)



Immunohistochemical staining of human endometrial cancer tissue using anti-Osteocalcin (2.5 ug/ml)

Biorbyt Ltd.

7 Signet Court, Swann Road
Cambridge
CB5 8LA
United Kingdom

Email: info@biorbyt.com, support@biorbyt.com

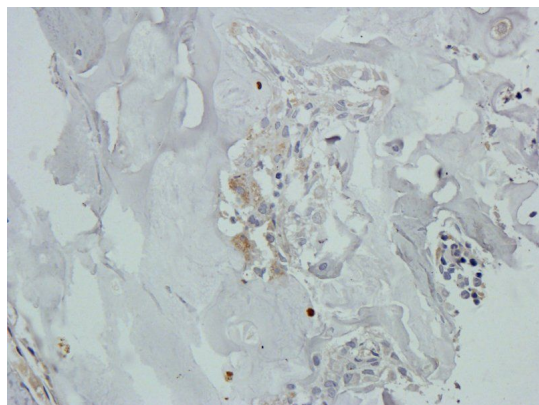
Phone: [+44 \(0\)1223 859353](tel:+44(0)1223859353) | Fax: [+1 \(415\) 651-8558](tel:+1(415)651-8558)

Biorbyt LLC

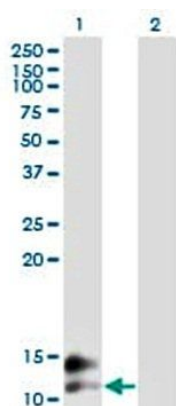
68 TW Alexander Drive
Research Triangle Park
Durham
NC 27713-2847
United States

Email: info@biorbyt.com, support@biorbyt.com

Phone: [+1 \(415\) 906-5211](tel:+1(415)906-5211) | Fax: [+1 \(415\) 651-8558](tel:+1(415)651-8558)



IHC-P staining of rat gristle tissue using anti-Osteocalcin (2.5 ug/ml)



Western blot analysis of 293T cell line using Osteocalcin antibody

Biorbyt Ltd.

7 Signet Court, Swann Road
Cambridge
CB5 8LA
United Kingdom

Email: info@biorbyt.com, support@biorbyt.com

Phone: [+44 \(0\)1223 859353](tel:+44(0)1223859353) | Fax: [+1 \(415\) 651-8558](tel:+1(415)651-8558)

Biorbyt LLC

68 TW Alexander Drive
Research Triangle Park
Durham
NC 27713-2847
United States

Email: info@biorbyt.com, support@biorbyt.com

Phone: [+1 \(415\) 906-5211](tel:+1(415)906-5211) | Fax: [+1 \(415\) 651-8558](tel:+1(415)651-8558)