

## Product Datasheet

# Leptin Receptor Rabbit Polyclonal Antibody (orb318718)

<b>Catalog Number</b>	orb318718
<b>Category</b>	Antibodies
<b>Description</b>	Leptin Receptor Rabbit Polyclonal Antibody is an unconjugated antibody that specifically recognizes Leptin Receptor. Generated against a KLH conjugated synthetic peptide derived from human Leptin Receptor. The peptide is available as orb374915. It is supplied in liquid form and exhibits reactivity with Human, Mouse, Porcine and Rat samples. The suitable applications for this antibody are ELISA, IHC-P and WB.
<b>Target</b>	Leptin Receptor
<b>Clonality</b>	Polyclonal
<b>Species/Host</b>	Rabbit
<b>Isotype</b>	IgG
<b>Conjugation</b>	Unconjugated
<b>Reactivity</b>	Human, Mouse, Porcine, Rat
<b>Form/Appearance</b>	10 mM PBS, 0.02% sodium azide
<b>Concentration</b>	- 100 µg (in 200 µl): 0.5 mg/ml- 200 µg (in 400 µl): 0.5 mg/ml
<b>Purity</b>	Polyclonal antibodies are purified by peptide affinity chromatography
<b>Immunogen</b>	KLH conjugated synthetic peptide derived from human Leptin Receptor. Please contact us for the exact immunogen sequence. The peptide is available as orb374915.

**Biorbyt Ltd.**

7 Signet Court, Swann Road  
Cambridge  
CB5 8LA  
United Kingdom

Email: [info@biorbyt.com](mailto:info@biorbyt.com), [support@biorbyt.com](mailto:support@biorbyt.com)

Phone: [+44 \(0\)1223 859353](tel:+44(0)1223859353) | Fax: [+1 \(415\) 651-8558](tel:+1(415)651-8558)

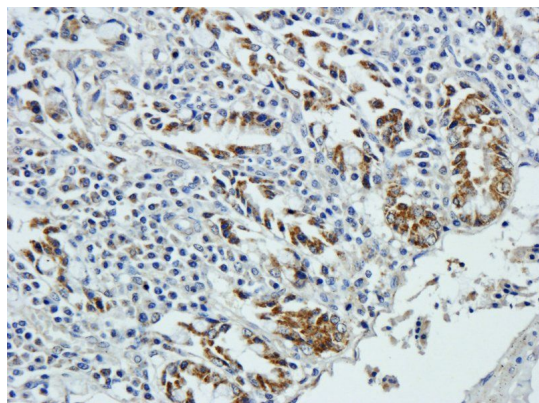
**Biorbyt LLC**

68 TW Alexander Drive  
Research Triangle Park  
Durham  
NC 27713-2847  
United States

Email: [info@biorbyt.com](mailto:info@biorbyt.com), [support@biorbyt.com](mailto:support@biorbyt.com)

Phone: [+1 \(415\) 906-5211](tel:+1(415)906-5211) | Fax: [+1 \(415\) 651-8558](tel:+1(415)651-8558)

<b>UniProt ID</b>	<b>P48356, Q62959, P48357</b>
<b>MW</b>	132 kDa
<b>Tested applications</b>	ELISA, IHC-P, WB
<b>Dilution range</b>	IHC-P: 1:100-800, WB: 1:100-800
<b>Storage</b>	Maintain refrigerated at 2-8°C for up to 2 weeks. For long term storage store at -20°C in small aliquots to prevent freeze-thaw cycles.
<b>Note</b>	For research use only
<b>Entrez</b>	<b>23484</b>
<b>NCBI</b>	<b>001003679</b>
<b>Expiration Date</b>	12 months from date of receipt.



IHC-P image of pig small intestines tissue using anti-Leptin receptor (2.5 ug/ml)

**Biorbyt Ltd.**

7 Signet Court, Swann Road  
Cambridge  
CB5 8LA  
United Kingdom

Email: [info@biorbyt.com](mailto:info@biorbyt.com), [support@biorbyt.com](mailto:support@biorbyt.com)

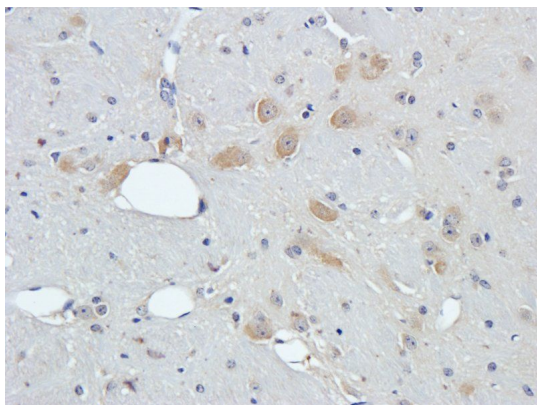
Phone: [+44 \(0\)1223 859353](tel:+44(0)1223859353) | Fax: [+1 \(415\) 651-8558](tel:+1(415)651-8558)

**Biorbyt LLC**

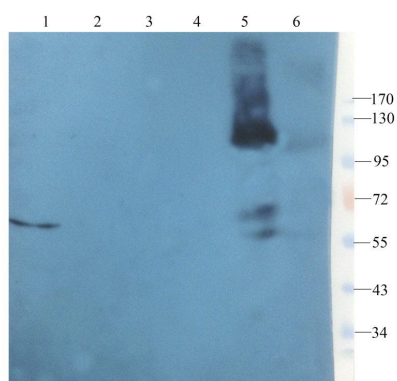
68 TW Alexander Drive  
Research Triangle Park  
Durham  
NC 27713-2847  
United States

Email: [info@biorbyt.com](mailto:info@biorbyt.com), [support@biorbyt.com](mailto:support@biorbyt.com)

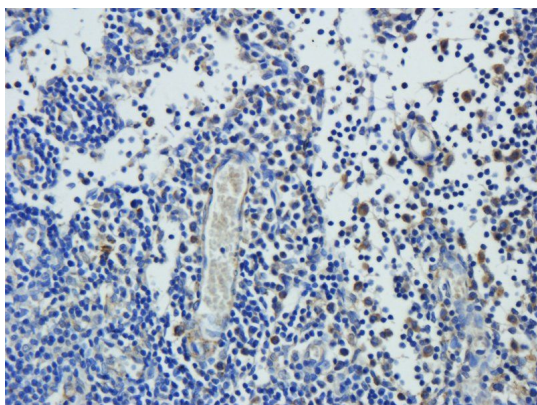
Phone: [+1 \(415\) 906-5211](tel:+1(415)906-5211) | Fax: [+1 \(415\) 651-8558](tel:+1(415)651-8558)



Immunohistochemical staining of mouse brain tissue using anti-Leptin receptor (2.5 ug/ml)



Western blot analysis of mouse liver (lane 1), mouse small intestines (lane 2), rat ovary (lane 3), rat brain (lane 4), ovarian cancer (lane 5), breast cancer (lane 6) using Leptin receptor (1 ug/ml)



Immunohistochemical staining of paraffin embedded rat bladder tissue using anti-Leptin receptor (2.5 ug/ml)

**Biorbyt Ltd.**

7 Signet Court, Swann Road  
Cambridge  
CB5 8LA  
United Kingdom

Email: [info@biorbyt.com](mailto:info@biorbyt.com), [support@biorbyt.com](mailto:support@biorbyt.com)

Phone: [+44 \(0\)1223 859353](tel:+44(0)1223859353) | Fax: [+1 \(415\) 651-8558](tel:+1(415)651-8558)

**Biorbyt LLC**

68 TW Alexander Drive  
Research Triangle Park  
Durham  
NC 27713-2847  
United States

Email: [info@biorbyt.com](mailto:info@biorbyt.com), [support@biorbyt.com](mailto:support@biorbyt.com)

Phone: [+1 \(415\) 906-5211](tel:+1(415)906-5211) | Fax: [+1 \(415\) 651-8558](tel:+1(415)651-8558)