

Product Datasheet

HEPCIDIN Rabbit Polyclonal Antibody (orb315547)

Catalog Number	orb315547
Category	Antibodies
Description	HEPCIDIN Rabbit Polyclonal Antibody is an unconjugated antibody that specifically recognizes HEPCIDIN. Generated against a KLH conjugated synthetic peptide derived from human HEPCIDIN. The peptide is available as orb374901. It is supplied in liquid form and exhibits reactivity with Human, Mouse and Rat samples. The suitable applications for this antibody are ELISA, IHC-P and WB.
Target	HEPCIDIN
Clonality	Polyclonal
Species/Host	Rabbit
Isotype	IgG
Conjugation	Unconjugated
Reactivity	Human, Mouse, Rat
Form/Appearance	10 mM PBS, 0.02% sodium azide
Concentration	- 100 µg (in 100 µl): 1 mg/ml- 200 µg (in 200 µl): 1 mg/ml
Purity	Polyclonal antibodies are purified by peptide affinity chromatography
Immunogen	KLH conjugated synthetic peptide derived from human HEPCIDIN. Please contact us for the exact immunogen sequence. The peptide is available as orb374901.
UniProt ID	P81172
MW	10 kDa

Biorbyt Ltd.

7 Signet Court, Swann Road
Cambridge
CB5 8LA
United Kingdom

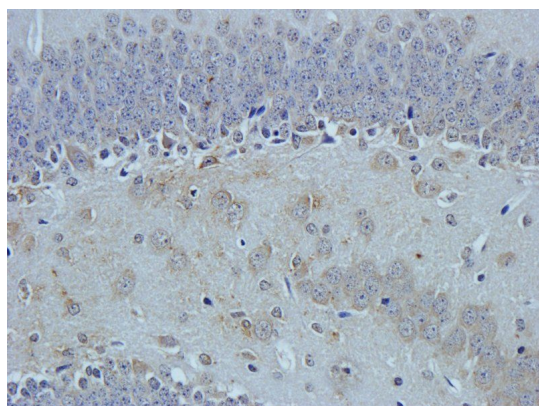
Email: info@biorbyt.com, support@biorbyt.com
Phone: [+44 \(0\)1223 859353](tel:+44(0)1223859353) | Fax: [+1 \(415\) 651-8558](tel:+1(415)651-8558)

Biorbyt LLC

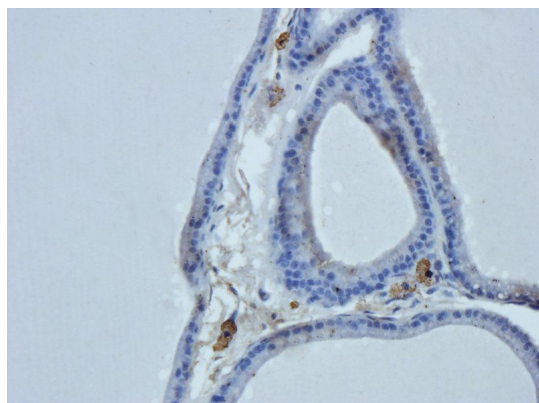
68 TW Alexander Drive
Research Triangle Park
Durham
NC 27713-2847
United States

Email: info@biorbyt.com, support@biorbyt.com
Phone: [+1 \(415\) 906-5211](tel:+1(415)906-5211) | Fax: [+1 \(415\) 651-8558](tel:+1(415)651-8558)

Tested applications	ELISA, IHC-P, WB
Dilution range	WB:1: 100-500, IHC-P: 1:100-500 (based on 0.5 mg/ml)
Storage	Maintain refrigerated at 2-8°C for up to 2 weeks. For long term storage store at -20°C in small aliquots to prevent freeze-thaw cycles.
Note	For research use only
Entrez	57817
NCBI	21, 11, 066998, 021175
Expiration Date	12 months from date of receipt.



IHC-P staining of mouse brain tissue using anti-HEPCIDIN (2.5 ug/ml)



IHC-P image of rat prostate tissue using anti-HEPCIDIN (2.5 ug/ml)

Biorbyt Ltd.

7 Signet Court, Swann Road
Cambridge
CB5 8LA
United Kingdom

Email: info@biorbyt.com, support@biorbyt.com

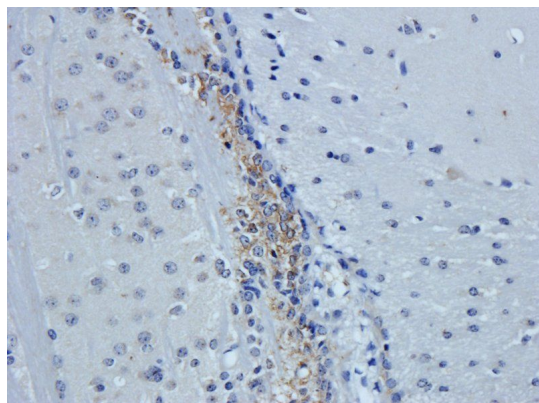
Phone: [+44 \(0\)1223 859353](tel:+44(0)1223859353) | Fax: [+1 \(415\) 651-8558](tel:+1(415)651-8558)

Biorbyt LLC

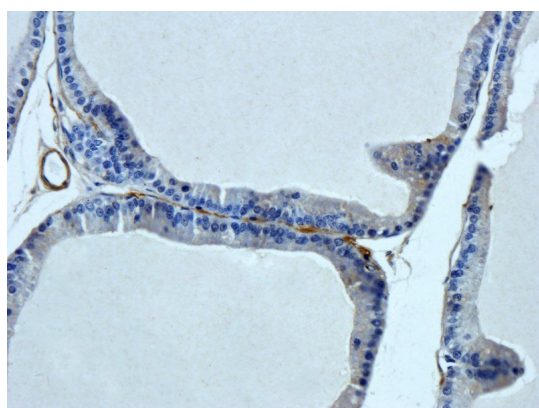
68 TW Alexander Drive
Research Triangle Park
Durham
NC 27713-2847
United States

Email: info@biorbyt.com, support@biorbyt.com

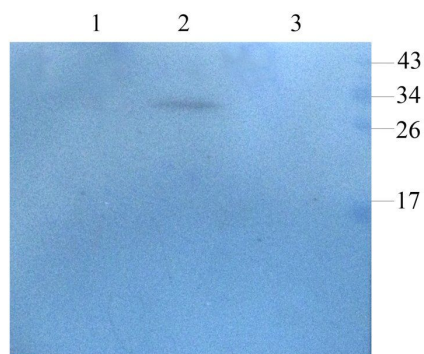
Phone: [+1 \(415\) 906-5211](tel:+1(415)906-5211) | Fax: [+1 \(415\) 651-8558](tel:+1(415)651-8558)



Immunohistochemical staining of mouse brain tissue using HEPCIDIN antibody (2.5 ug/ml)



Immunohistochemical staining of paraffin embedded rat prostate tissue using anti-HEPCIDIN (2.5 ug/ml)



Western blot analysis of rat liver (lane 1), mouse heart (lane 2), rat brain (lane 3) using HEPCIDIN (1 ug/ml)

Biorbyt Ltd.

7 Signet Court, Swann Road
Cambridge
CB5 8LA
United Kingdom

Email: info@biorbyt.com, support@biorbyt.com

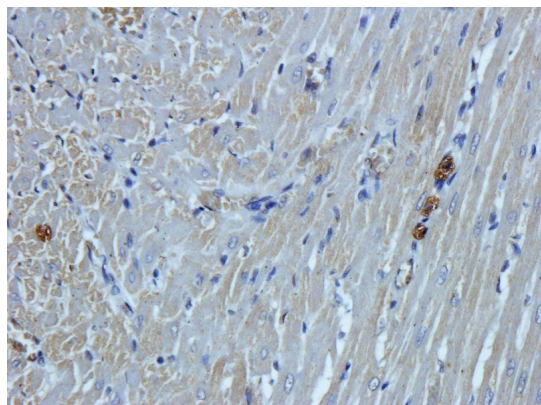
Phone: +44 (0)1223 859353 | Fax: +1 (415) 651-8558

Biorbyt LLC

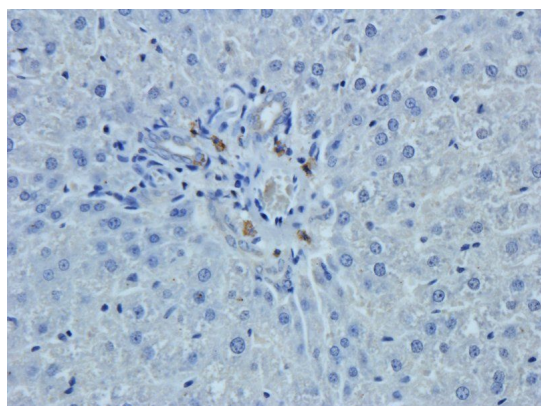
68 TW Alexander Drive
Research Triangle Park
Durham
NC 27713-2847
United States

Email: info@biorbyt.com, support@biorbyt.com

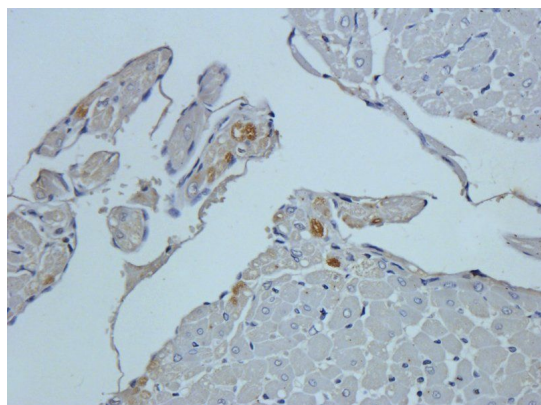
Phone: +1 (415) 906-5211 | Fax: +1 (415) 651-8558



Immunohistochemical staining of rat heart tissue using anti-HEPCIDIN (2.5 ug/ml)



Immunohistochemical staining of rat liver tissue using HEPCIDIN antibody (2.5 ug/ml)



IHC-P staining of rat heart tissue using anti-HEPCIDIN (2.5 ug/ml)

Biorbyt Ltd.

7 Signet Court, Swann Road
Cambridge
CB5 8LA
United Kingdom

Email: info@biorbyt.com, support@biorbyt.com

Phone: [+44 \(0\)1223 859353](tel:+44(0)1223859353) | Fax: [+1 \(415\) 651-8558](tel:+1(415)651-8558)

Biorbyt LLC

68 TW Alexander Drive
Research Triangle Park
Durham
NC 27713-2847
United States

Email: info@biorbyt.com, support@biorbyt.com

Phone: [+1 \(415\) 906-5211](tel:+1(415)906-5211) | Fax: [+1 \(415\) 651-8558](tel:+1(415)651-8558)