

Product Datasheet

Apolipoprotein E protein (orb315534)

Catalog Number	orb315534
Category	Proteins
Description	Apolipoprotein E protein
Target	Apolipoprotein E
Species/Host	E. coli
Conjugation	Unconjugated
Reactivity	Human
Form/Appearance	20mM Tris-HCl, 150mM NaCl, pH 7.5
Concentration	0.6 mg/ml
Purity	> 90.0% as determined by 12% SDS-PAGE
Protein Sequence	KVEQAVETEP EPELRQQTEW QSGQRWELAL GRFDWYLRWV QTLSEQVQEE LLSSQVTQEL RALMDETMKE LKAYKSELEE QLTPVAEETR ARLSKELQAA QARLGADMED VCGRLVQYRG EVQAMLGQST EELRVRLASH LRKLRKLLR DADDLQKRLA VYQAGAREGA ERGLS
MW	22.6 kDa
Tested applications	ELISA, SDS-PAGE, WB
Application notes	N-His6
Storage	Store at 4°C for up to two weeks. For long term storage, aliquot and store at -20°C, avoid freeze/thaw cycles.
Note	For research use only

Biorbyt Ltd.

7 Signet Court, Swann Road
Cambridge
CB5 8LA
United Kingdom

Email: info@biorbyt.com, support@biorbyt.com

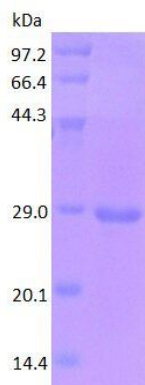
Phone: [+44 \(0\)1223 859353](tel:+44(0)1223859353) | Fax: [+1 \(415\) 651-8558](tel:+1(415)651-8558)

Biorbyt LLC

68 TW Alexander Drive
Research Triangle Park
Durham
NC 27713
United States

Email: info@biorbyt.com, support@biorbyt.com

Phone: [+1 \(415\) 906-5211](tel:+1(415)906-5211) | Fax: [+1 \(415\) 651-8558](tel:+1(415)651-8558)

NCBI**001302688**

SDS-PAGE analysis of Apolipoprotein E protein

Biorbyt Ltd.

7 Signet Court, Swann Road
Cambridge
CB5 8LA
United Kingdom

Email: info@biorbyt.com, support@biorbyt.com

Phone: [+44 \(0\)1223 859353](tel:+44(0)1223859353) | Fax: [+1 \(415\) 651-8558](tel:+1(415)651-8558)

Biorbyt LLC

68 TW Alexander Drive
Research Triangle Park
Durham
NC 27713
United States

Email: info@biorbyt.com, support@biorbyt.com

Phone: [+1 \(415\) 906-5211](tel:+1(415)906-5211) | Fax: [+1 \(415\) 651-8558](tel:+1(415)651-8558)