

Product Datasheet

EPAS1 Polyclonal Antibody (orb3149445)

Catalog Number	orb3149445
Category	Antibodies
Description	Anti-EPAS1 Polyclonal Antibody is a rabbit polyclonal antibody detecting Endothelial PAS domain-containing protein 1; EPAS-1; Basi... in ELISA, IHC, WB. Suitable for Human, Mouse, and Rat. Highlights Affinity Purified: Minimal background and high purity for reliable results. Multi-Application: Validated across multiple applications. Multi-Species: Cross-reactive for translational research.
Clonality	Polyclonal
Species/Host	Rabbit
Conjugation	Unconjugated
Reactivity	Human, Mouse, Rat
Form/Appearance	Liquid
Concentration	Lot dependent
UniProt ID	Q9JHS1, P97481, Q99814
Tested applications	ELISA, IHC, WB
Antibody Type	Primary Antibody
Storage	Maintain refrigerated at 2-8°C for up to 2 weeks. For long term storage store at -20°C in small aliquots to prevent freeze-thaw cycles.
Note	For research use only
Expiration Date	12 months from date of receipt.

Biorbyt Ltd.

7 Signet Court, Swann Road
Cambridge
CB5 8LA
United Kingdom

Email: info@biorbyt.com, support@biorbyt.com

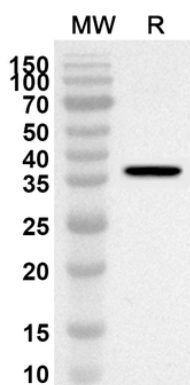
Phone: [+44 \(0\)1223 859353](tel:+44(0)1223859353) | Fax: [+1 \(415\) 651-8558](tel:+1(415)651-8558)

Biorbyt LLC

68 TW Alexander Drive
Research Triangle Park
Durham
NC 27713-2847
United States

Email: info@biorbyt.com, support@biorbyt.com

Phone: [+1 \(415\) 906-5211](tel:+1(415)906-5211) | Fax: [+1 \(415\) 651-8558](tel:+1(415)651-8558)



Western blot analysis was performed using anti-EPAS1 polyclonal antibody at 1 $\mu\text{g}/\text{mL}$ on recombinant EPAS1 (Catalog No. orb3149444).

Biorbyt Ltd.

7 Signet Court, Swann Road
Cambridge
CB5 8LA
United Kingdom

Email: info@biorbyt.com, support@biorbyt.com

Phone: [+44 \(0\)1223 859353](tel:+44(0)1223859353) | Fax: [+1 \(415\) 651-8558](tel:+1(415)651-8558)

Biorbyt LLC

68 TW Alexander Drive
Research Triangle Park
Durham
NC 27713-2847
United States

Email: info@biorbyt.com, support@biorbyt.com

Phone: [+1 \(415\) 906-5211](tel:+1(415)906-5211) | Fax: [+1 \(415\) 651-8558](tel:+1(415)651-8558)