

Product Datasheet

Inflammasome Antibody Panel (orb3130889)

Catalog Number	orb3130889
Category	Antibodies
Description	The Inflammasome Antibody Panel contains a curated set of antibodies targeting key components of inflammasome complexes and their downstream effectors. This panel enables comprehensive analysis of inflammasome activation, including markers for NLRP3, ASC, cleaved Caspase-1, and the mature form of IL-1 β .
Isotype	Rabbit-IgG / Mouse IgG
Conjugation	Unconjugated
Reactivity	Human, Mouse
Buffer/Preservatives	100mM Tris Glycine, 20% Glycerol (pH7). 0.025% ProClin 300 was added as a preservative
Immunogen	Synthetic peptide
Tested applications	IF, IHC, WB
Specificity	Endogenous
Storage	Maintain refrigerated at 2-8°C for up to 2 weeks. For long term storage store at -20°C in small aliquots to prevent freeze-thaw cycles.
Note	For research use only
Expiration Date	12 months from date of receipt.

Biorbyt Ltd.

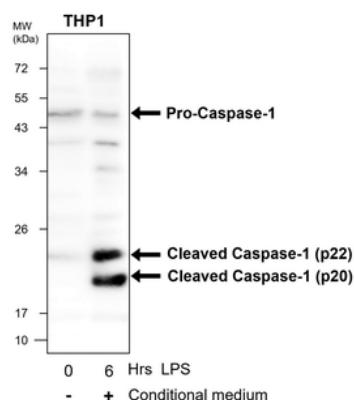
7 Signet Court, Swann Road
Cambridge
CB5 8LA
United Kingdom

Email: info@biorbyt.com, support@biorbyt.com
Phone: [+44 \(0\)1223 859353](tel:+44(0)1223859353) | Fax: [+1 \(415\) 651-8558](tel:+1(415)6518558)

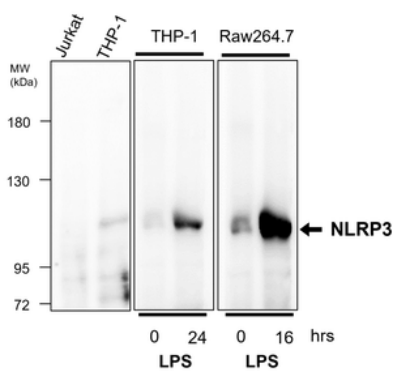
Biorbyt LLC

68 TW Alexander Drive
Research Triangle Park
Durham
NC 27713
United States

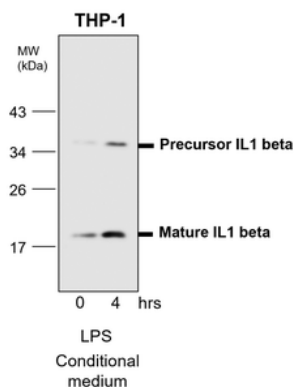
Email: info@biorbyt.com, support@biorbyt.com
Phone: [+1 \(415\) 906-5211](tel:+1(415)9065211) | Fax: [+1 \(415\) 651-8558](tel:+1(415)6518558)



orb1294356 anti-Caspase-1 Cleaved Asp297 antibody WB image Western blot analysis of cell extracts using Caspase-1 antibody orb1294356 at 1/500 dilution.



orb1294254 anti-NLRP3 antibody WB image Western blot analysis of cell extracts using NLRP3 antibody orb1294254 at 1/700 dilution.



orb1294342 anti-IL1 beta antibody WB image Western blot analysis of cell extracts using IL1 beta antibody orb1294342 at 1/500 dilution.

Biorbyt Ltd.

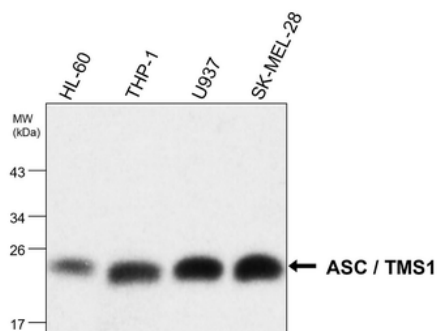
7 Signet Court, Swann Road
Cambridge
CB5 8LA
United Kingdom

Email: info@biorbyt.com, support@biorbyt.com
Phone: +44 (0)1223 859353 | Fax: +1 (415) 651-8558

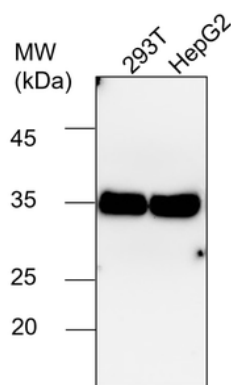
Biorbyt LLC

68 TW Alexander Drive
Research Triangle Park
Durham
NC 27713
United States

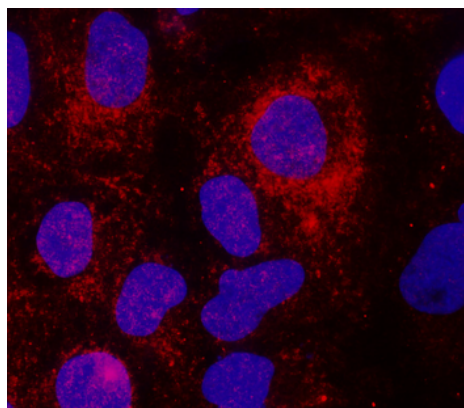
Email: info@biorbyt.com, support@biorbyt.com
Phone: +1 (415) 906-5211 | Fax: +1 (415) 651-8558



orb1735101 ASC / TMS1 monoclonal antibody WB image
Western blot analysis of cell extracts using ASC / TMS1
monoclonal orb1735101 at 1/1000 dilution.



orb1294414 anti-GAPDH antibody WB image Western blot
analysis of cell extracts using GAPDH antibody orb1294414 at
1/5000 dilution.



orb1294356 anti-Caspase 1 antibody ICC/IF image Cells were
fixed with 4% PFA for 10 min at RT, permeabilized with 0.1%
NP-40 for 10 min at RT then blocked with 5% BSA for 30 min at
RT. Cells were stained with orb1294356 anti- Caspase 1
antibody (red) at 1:200 and 4°C.

Biorbyt Ltd.

7 Signet Court, Swann Road
Cambridge
CB5 8LA
United Kingdom

Email: info@biorbyt.com, support@biorbyt.com

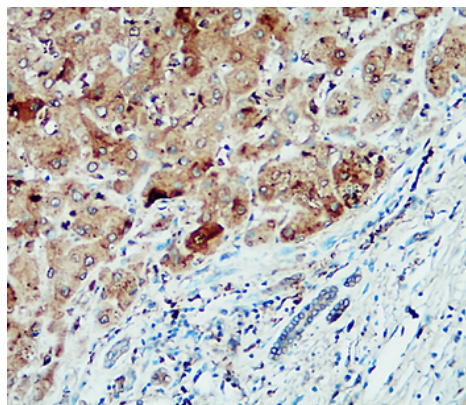
Phone: +44 (0)1223 859353 | Fax: +1 (415) 651-8558

Biorbyt LLC

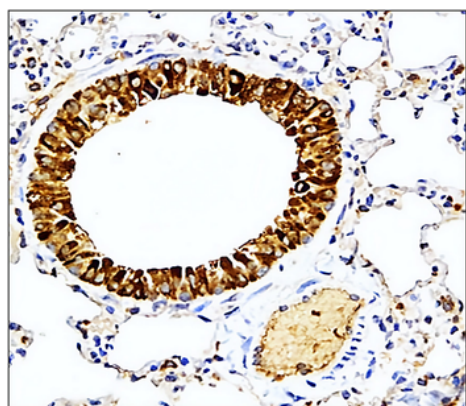
68 TW Alexander Drive
Research Triangle Park
Durham
NC 27713
United States

Email: info@biorbyt.com, support@biorbyt.com

Phone: +1 (415) 906-5211 | Fax: +1 (415) 651-8558

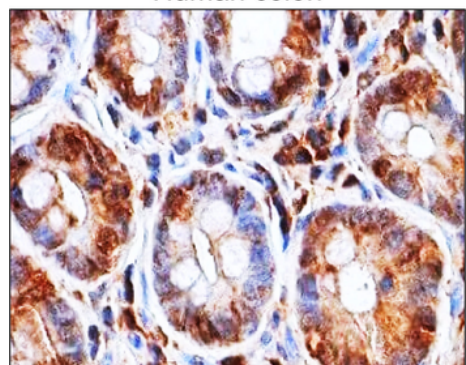


orb1294254 anti-NLRP3 antibody IHC image
Immunohistochemical analysis of paraffin embedded Human cancer tissue labeling NLRP3 antibody orb1294254 at 1/200.



orb1294342 anti-IL1 beta antibody IHC image
Immunohistochemical analysis of paraffin embedded mouse tissue labeling IL1 beta with orb1294342 at 1/200.

Human colon



orb1735101 anti-ASC / TMS1 monoclonal antibody IHC image
Immunohistochemical analysis of paraffin embedded Human cancer tissue labeling ASC / TMS1 monoclonal orb1735101 at 1/100.

Biorbyt Ltd.

7 Signet Court, Swann Road
Cambridge
CB5 8LA
United Kingdom

Email: info@biorbyt.com, support@biorbyt.com
Phone: +44 (0)1223 859353 | Fax: +1 (415) 651-8558

Biorbyt LLC

68 TW Alexander Drive
Research Triangle Park
Durham
NC 27713
United States

Email: info@biorbyt.com, support@biorbyt.com
Phone: +1 (415) 906-5211 | Fax: +1 (415) 651-8558