

Product Datasheet

Rat Creatine Kinase, Brain (CKB) ELISA Kit (orb3032824)

Catalog Number	orb3032824
Category	Assays and Kits
Description	This Rat Creatine Kinase, Brain (CKB) ELISA Kit is a precoated, Sandwich ELISA assay designed to detect and quantify the target analyte in serum, plasma, urine and other biological fluids . This product is for Research Use Only.
Reactivity	Rat
UniProt ID	P07335
Assay Type	Sandwich
Assay Time	4.5 hours
Range	1.56-100 ng/mL
Sensitivity	0.54 ng/mL
Sample Types	serum, plasma, urine and other biological fluids
Storage	TMB Substrate, Wash Buffer, Stop Solution at 4°C, all others at -20°C
Note	For research use only
Expiration Date	6 months from date of receipt.

Biorbyt Ltd.

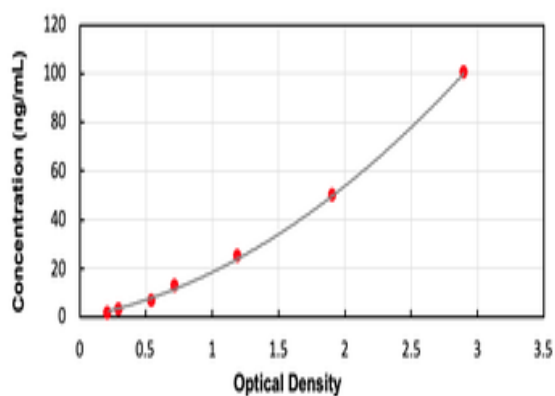
7 Signet Court, Swann Road
Cambridge
CB5 8LA
United Kingdom

Email: info@biorbyt.com, support@biorbyt.com
Phone: [+44 \(0\)1223 859353](tel:+44(0)1223859353) | Fax: [+1 \(415\) 651-8558](tel:+1(415)651-8558)

Biorbyt LLC

68 TW Alexander Drive
Research Triangle Park
Durham
NC 27713-2847
United States

Email: info@biorbyt.com, support@biorbyt.com
Phone: [+1 \(415\) 906-5211](tel:+1(415)906-5211) | Fax: [+1 \(415\) 651-8558](tel:+1(415)651-8558)



Standard curve for orb3032824 ELISA kit.

Biorbyt Ltd.

7 Signet Court, Swann Road
Cambridge
CB5 8LA
United Kingdom

Email: info@biorbyt.com, support@biorbyt.com

Phone: [+44 \(0\)1223 859353](tel:+44(0)1223859353) | Fax: [+1 \(415\) 651-8558](tel:+1(415)6518558)

Biorbyt LLC

68 TW Alexander Drive
Research Triangle Park
Durham
NC 27713-2847
United States

Email: info@biorbyt.com, support@biorbyt.com

Phone: [+1 \(415\) 906-5211](tel:+1(415)9065211) | Fax: [+1 \(415\) 651-8558](tel:+1(415)6518558)