

Product Datasheet

Chicken Tubulin beta 3 Antibody (orb3011859)

Catalog Number	orb3011859
Category	Antibodies
Description	Chicken Tubulin beta 3 Antibody
Species/Host	Gallus
Conjugation	Unconjugated
Reactivity	Human, Mouse, Rat
Form/Appearance	Liquid
Concentration	~1mg/ml
Buffer/Preservatives	PBS, 50% glycerol, 0.05% Proclin 300, 0.08%rAlbumin
Purification	Ammonium sulfate precipitation&Antigen affinity chromatography
Immunogen	Recombinant Human Tubulin beta 3
UniProt ID	Q13509
MW	55 kDa
Tested applications	IF, IHC-Fr, WB
Dilution range	WB: 1:500-1000, IHC-F: 1:100-500, IF: 1:100-300
Storage	Maintain refrigerated at 2-8°C for up to 2 weeks. For long term storage store at -20°C in small aliquots to prevent freeze-thaw cycles.
Note	For research use only

Biorbyt Ltd.

7 Signet Court, Swann Road
Cambridge
CB5 8LA
United Kingdom

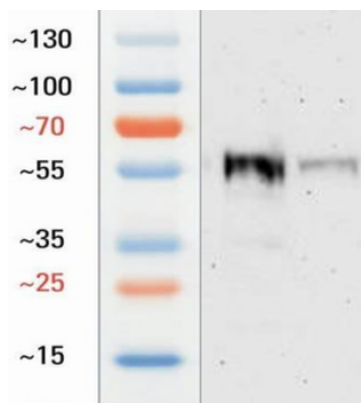
Email: info@biorbyt.com, support@biorbyt.com
Phone: [+44 \(0\)1223 859353](tel:+44(0)1223859353) | Fax: [+1 \(415\) 651-8558](tel:+1(415)651-8558)

Biorbyt LLC

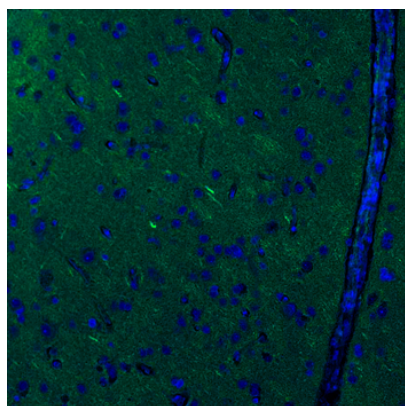
68 TW Alexander Drive
Research Triangle Park
Durham
NC 27713
United States

Email: info@biorbyt.com, support@biorbyt.com
Phone: [+1 \(415\) 906-5211](tel:+1(415)906-5211) | Fax: [+1 \(415\) 651-8558](tel:+1(415)651-8558)

Expiration Date 12 months from date of receipt.



Western blot analysis of mouse brain and rat brain lysates using Chicken anti-Tubulin beta 3 antibody.



Immunohistochemistry analysis of mouse brain tissue using Chicken anti-Tubulin beta 3 antibody.

Biorbyt Ltd.

7 Signet Court, Swann Road
Cambridge
CB5 8LA
United Kingdom

Email: info@biorbyt.com, support@biorbyt.com

Phone: [+44 \(0\)1223 859353](tel:+44(0)1223859353) | Fax: [+1 \(415\) 651-8558](tel:+1(415)651-8558)

Biorbyt LLC

68 TW Alexander Drive
Research Triangle Park
Durham
NC 27713
United States

Email: info@biorbyt.com, support@biorbyt.com

Phone: [+1 \(415\) 906-5211](tel:+1(415)906-5211) | Fax: [+1 \(415\) 651-8558](tel:+1(415)651-8558)