

## Product Datasheet

# Human RB1(Retinoblastoma Protein 1) Microsample ELISA Kit (orb2998185)

<b>Catalog Number</b>	orb2998185
<b>Category</b>	Assays and Kits
<b>Description</b>	Human RB1(Retinoblastoma Protein 1) Microsample ELISA Kit
<b>Reactivity</b>	Human
<b>Application notes</b>	<p>The test principle applied in this kit is Sandwich enzyme immunoassay. The microtiter plate provided in this kit has been pre-coated with an antibody specific to Human RB1. Standards or samples are added to the appropriate microtiter plate wells then with a biotin-conjugated antibody specific to Human RB1. Next, Avidin conjugated to Horseradish Peroxidase (HRP) is added to each microplate well and incubated. After TMB substrate solution is added, only those wells that contain Human RB1, biotin-conjugated antibody and enzyme-conjugated Avidin will exhibit a change in color. The enzyme-substrate reaction is terminated by the addition of sulphuric acid solution and the color change is measured spectrophotometrically at a wavelength of 450nm <math>\pm</math> 10nm. The concentration of Human RB1 in the samples is then determined by comparing the OD of the samples to the standard curve.</p>
<b>Assay Type</b>	Sandwich
<b>Assay Time</b>	3.5h
<b>Range</b>	0.16-10 ng/mL
<b>Sensitivity</b>	0.055 ng/mL
<b>Sample Types</b>	Tissue homogenates, cell lysates and other biological fluids
<b>Note</b>	For research use only

**Biorbyt Ltd.**

7 Signet Court, Swann Road  
Cambridge  
CB5 8LA  
United Kingdom

Email: [info@biorbyt.com](mailto:info@biorbyt.com), [support@biorbyt.com](mailto:support@biorbyt.com)

Phone: [+44 \(0\)1223 859353](tel:+44(0)1223859353) | Fax: [+1 \(415\) 651-8558](tel:+1(415)651-8558)

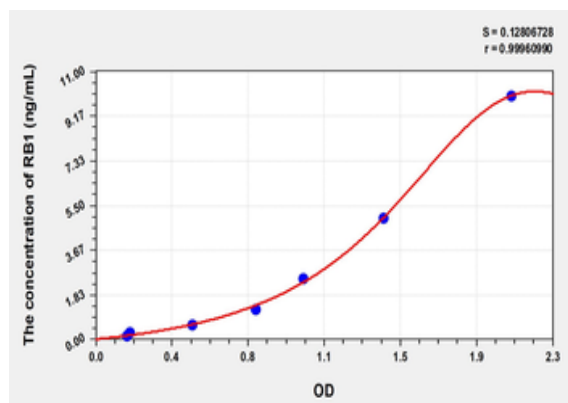
**Biorbyt LLC**

68 TW Alexander Drive  
Research Triangle Park  
Durham  
NC 27713  
United States

Email: [info@biorbyt.com](mailto:info@biorbyt.com), [support@biorbyt.com](mailto:support@biorbyt.com)

Phone: [+1 \(415\) 906-5211](tel:+1(415)906-5211) | Fax: [+1 \(415\) 651-8558](tel:+1(415)651-8558)

**Expiration Date** 6 months from date of receipt.

**Biorbyt Ltd.**

7 Signet Court, Swann Road  
Cambridge  
CB5 8LA  
United Kingdom

Email: [info@biorbyt.com](mailto:info@biorbyt.com), [support@biorbyt.com](mailto:support@biorbyt.com)

Phone: [+44 \(0\)1223 859353](tel:+44(0)1223859353) | Fax: [+1 \(415\) 651-8558](tel:+1(415)651-8558)

**Biorbyt LLC**

68 TW Alexander Drive  
Research Triangle Park  
Durham  
NC 27713  
United States

Email: [info@biorbyt.com](mailto:info@biorbyt.com), [support@biorbyt.com](mailto:support@biorbyt.com)

Phone: [+1 \(415\) 906-5211](tel:+1(415)906-5211) | Fax: [+1 \(415\) 651-8558](tel:+1(415)651-8558)