

Product Datasheet

Recombinant Human Cytochrome P450 11B2, mitochondrial (CYP11B2) (orb2992465)

Catalog Number	orb2992465
Category	Proteins
Description	This Recombinant Human Cytochrome P450 11B2, mitochondrial (CYP11B2) spans the amino acid sequence from region 25-503aa. Purity: Greater than 85% as determined by SDS-PAGE.
Tag	N-terminal 6xHis-tagged
Form/Appearance	Liquid or Lyophilized powder
Buffer/Preservatives	If the delivery form is liquid, the default storage buffer is Tris/PBS-based buffer, 5%-50% glycerol. If the delivery form is lyophilized powder, the buffer before lyophilization is Tris/PBS-based buffer, 6% Trehalose, pH 8.0.
Purity	Greater than 85% as determined by SDS-PAGE.
Protein Sequence	GTRAARAPRTVLPFEAMPQHHPGNRWLRLQLIWREQGYEHLHLEMHQTFQELGPIFRYNLG GPRMVCVMLPEDVEKLQQVDSLHPCRMILEPWVAYRQHRGHKCGVFLLNGPEWRFNRLR LNPDLVSPKAVQRFLPMVDAVARDFSQALKKKVLQNARGSLTLDVQPSIFHYTIEASNLALF GERLGLVGHSPSSASLNFLHALEVMFKSTVQLMFMPRSLSRWISPKVWKEHFEAWDCIFQY GDNCIQKIYQELAFNRPQHYTGIVAELLLKAELSLEAIKANSMELTAGSVDTTAFPLLMTLFEL ARNPDVQQILRQESLAAAASISEHPQKATTELP LLRAALKETRLRYPVGLFLERVVSSDLVLQ NYHIPAGTLVQVFLYSLGRNAALFPRPERYNPQRWLDIRGSGRNFHHVFPFGFGMRQCLGRR LAEAEMLLLLHHVLKHFLVETLTQEDIKMYVSFILRPGTSPLLTFRAIN
Protein Length	Full Length of Mature Protein
UniProt ID	P19099
MW	61.8 kDa

Biorbyt Ltd.

7 Signet Court, Swann Road
Cambridge
CB5 8LA
United Kingdom

Email: info@biorbyt.com, support@biorbyt.com
Phone: [+44 \(0\)1223 859353](tel:+44(0)1223859353) | Fax: [+1 \(415\) 651-8558](tel:+1(415)651-8558)

Biorbyt LLC

68 TW Alexander Drive
Research Triangle Park
Durham
NC 27713
United States

Email: info@biorbyt.com, support@biorbyt.com
Phone: [+1 \(415\) 906-5211](tel:+1(415)906-5211) | Fax: [+1 \(415\) 651-8558](tel:+1(415)651-8558)

Application notes

We recommend that this vial be briefly centrifuged prior to opening to bring the contents to the bottom. Please reconstitute protein in deionized sterile water to a concentration of 0.1-1.0 mg/mL. We recommend to add 5-50% of glycerol (final concentration) and aliquot for long-term storage at -20°C/-80°C. Our default final concentration of glycerol is 50%. Customers could use it as reference.

Source

E.coli

Biological Origin

Homo sapiens (Human)

Expression Region

25-503aa

Storage

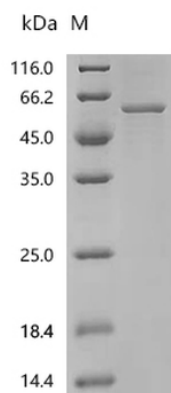
The shelf life is related to many factors, storage state, buffer ingredients, storage temperature and the stability of the protein itself. Generally, the shelf life of liquid form is 6 months at -20°C/-80°C. The shelf life of lyophilized form is 12 months at -20°C/-80°C.

Note

For research use only

Expiration Date

6 months from date of receipt.



(Tris-Glycine gel) Discontinuous SDS-PAGE (reduced) with 5% enrichment gel and 15% separation gel.

Biorbyt Ltd.

7 Signet Court, Swann Road
Cambridge
CB5 8LA
United Kingdom

Email: info@biorbyt.com, support@biorbyt.comPhone: [+44 \(0\)1223 859353](tel:+44(0)1223859353) | Fax: [+1 \(415\) 651-8558](tel:+1(415)6518558)**Biorbyt LLC**

68 TW Alexander Drive
Research Triangle Park
Durham
NC 27713
United States

Email: info@biorbyt.com, support@biorbyt.comPhone: [+1 \(415\) 906-5211](tel:+1(415)9065211) | Fax: [+1 \(415\) 651-8558](tel:+1(415)6518558)