

Product Datasheet

Recombinant Human Proto-oncogene tyrosine-protein kinase receptor Ret (RET), partial (Active) (orb2992198)

Catalog Number	orb2992198
Category	Proteins
Description	This Recombinant Human Proto-oncogene tyrosine-protein kinase receptor Ret (RET), partial (Active) spans the amino acid sequence from region 29-635aa. Purity: Greater than 95% as determined by SDS-PAGE.
Tag	C-terminal 10xHis-tagged
Form/Appearance	Lyophilized powder
Buffer/Preservatives	Lyophilized from a 0.2 µm sterile filtered PBS, 6% Trehalose, pH 7.4
Purity	Greater than 95% as determined by SDS-PAGE.
Protein Sequence	LYFSRDAYWEKLYVDQAAGTPLLYVHALRDAPEEVPSFRLGQHLYGTYRTRLHENNWICIQ EDTGLLYLNRSLDHSSWEKLSVRNRGFLLTVYLKVFLSPTSLREGECQWPGCARVYFSFF NTSFACSSSLKPRELCFPETRPSFRIENRPPGTFHQFRLLPVQFLCPNISVAYRLLLEGGLPF RCAPDSLEVSTRWALDREQREKYELVAVCTVHAGAREEVMMVFPVTVYDEDDSAPTFPA GVDTASAVVEFKRKEDTVVATLRVFDADVVPASGELVRRYTSTLLPGDTWAQQTFRVEHW PNETSVQANGSFVRATVHDYRLVLNRNLSISENRTMQLAVLVNDSDFQGPGAGVLLLHFN VSVLPVSLHLPSTYSLSVSRRARRFAQIGKVCVENCQAFSGINVQYKLHSSGANSTLGVVT SAEDTSGILFVNDTKALRRPKCAELHYMVVATDQQTSRQAQAQLLVTVEGSYVAEEAGCPL SCAVSKRRLECEECGGLGSPTGRCEWRQGDGKGITRNFSTCSPSTKTCPDGHCDVVETQD INICPQDCLRGSIVGGHEPGEPRGKAGYGTCCNCFPEEKKCFCEPEDIQDPLCDELCR
Protein Length	Partial
UniProt ID	P07949

Biorbyt Ltd.

7 Signet Court, Swann Road
Cambridge
CB5 8LA
United Kingdom

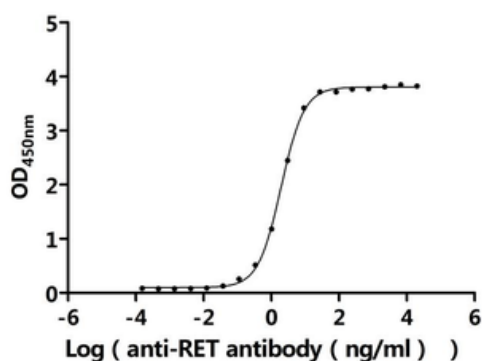
Email: info@biorbyt.com, support@biorbyt.com
Phone: [+44 \(0\)1223 859353](tel:+44(0)1223859353) | Fax: [+1 \(415\) 651-8558](tel:+1(415)651-8558)

Biorbyt LLC

68 TW Alexander Drive
Research Triangle Park
Durham
NC 27713
United States

Email: info@biorbyt.com, support@biorbyt.com
Phone: [+1 \(415\) 906-5211](tel:+1(415)906-5211) | Fax: [+1 \(415\) 651-8558](tel:+1(415)651-8558)

MW	69.2 kDa
Application notes	We recommend that this vial be briefly centrifuged prior to opening to bring the contents to the bottom. Please reconstitute protein in deionized sterile water to a concentration of 0.1-1.0 mg/mL. We recommend to add 5-50% of glycerol (final concentration) and aliquot for long-term storage at -20°C/-80°C. Our default final concentration of glycerol is 50%. Customers could use it as reference.
Endotoxins	Less than 1.0 EU/μg as determined by LAL method.
Source	Mammalian cell
Biological Origin	Homo sapiens (Human)
Biological Activity	Measured by its binding ability in a functional ELISA. Immobilized Human RET at 2 μg/mL can bind Anti-RET recombinant antibody. The EC50 is 1.857-2.048 ng/mL.
Expression Region	29-635aa
Storage	The shelf life is related to many factors, storage state, buffer ingredients, storage temperature and the stability of the protein itself. Generally, the shelf life of liquid form is 6 months at -20°C/-80°C. The shelf life of lyophilized form is 12 months at -20°C/-80°C.
Note	For research use only
Expiration Date	6 months from date of receipt.



Measured by its binding ability in a functional ELISA. Immobilized Human RET at 2 μg/mL can bind Anti-RET recombinant antibody. The EC50 is 1.857-2.048 ng/mL.

Biorbyt Ltd.

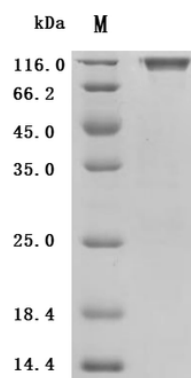
7 Signet Court, Swann Road
Cambridge
CB5 8LA
United Kingdom

Email: info@biorbyt.com, support@biorbyt.com
Phone: [+44 \(0\)1223 859353](tel:+44(0)1223859353) | Fax: [+1 \(415\) 651-8558](tel:+1(415)6518558)

Biorbyt LLC

68 TW Alexander Drive
Research Triangle Park
Durham
NC 27713
United States

Email: info@biorbyt.com, support@biorbyt.com
Phone: [+1 \(415\) 906-5211](tel:+1(415)9065211) | Fax: [+1 \(415\) 651-8558](tel:+1(415)6518558)



(Tris-Glycine gel) Discontinuous SDS-PAGE (reduced) with 5% enrichment gel and 15% separation gel.

Biorbyt Ltd.

7 Signet Court, Swann Road
Cambridge
CB5 8LA
United Kingdom

Email: info@biorbyt.com, support@biorbyt.com

Phone: [+44 \(0\)1223 859353](tel:+44(0)1223859353) | Fax: [+1 \(415\) 651-8558](tel:+1(415)651-8558)

Biorbyt LLC

68 TW Alexander Drive
Research Triangle Park
Durham
NC 27713
United States

Email: info@biorbyt.com, support@biorbyt.com

Phone: [+1 \(415\) 906-5211](tel:+1(415)906-5211) | Fax: [+1 \(415\) 651-8558](tel:+1(415)651-8558)