

Product Datasheet

Retlirafusp Alfa Human Monoclonal Antibody (orb2976491)

Catalog Number	orb2976491
Category	Antibodies
Description	Retlirafusp Alfa is a research-grade recombinant antibody targeting CD1. Produced in mammalian cells with native-like glycosylation. Highlights Research Grade: For PK/PD studies, assay development, and ADA research. Native Glycosylation: Mammalian expression ensures native-like patterns.
Clonality	Monoclonal
Species/Host	Human
Isotype	IgG4-kappa
Conjugation	Unconjugated
Reactivity	Human
Form/Appearance	Liquid
Concentration	Lot dependent
Buffer/Preservatives	0.01M PBS, pH 7.4.
Purity	>95% purity as determined by SDS-PAGE.
Purification	Protein A/G purified from cell culture supernatant.
UniProt ID	P37173, Q9NZQ7
Tested applications	ELISA, FA, FACS, In vivo

Biorbyt Ltd.

7 Signet Court, Swann Road
Cambridge
CB5 8LA
United Kingdom

Email: info@biorbyt.com, support@biorbyt.com

Phone: +44 (0)1223 859353 | Fax: +1 (415) 651-8558

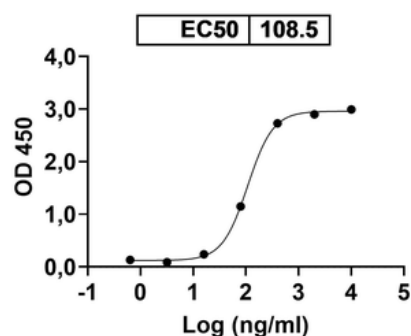
Biorbyt LLC

68 TW Alexander Drive
Research Triangle Park
Durham
NC 27713-2847
United States

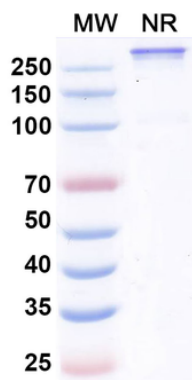
Email: info@biorbyt.com, support@biorbyt.com

Phone: +1 (415) 906-5211 | Fax: +1 (415) 651-8558

Antibody Type	Biosimilar Antibody
Expression System	Mammalian Cells
Endotoxins	Please contact with the lab for this information.
Storage	Maintain refrigerated at 2-8°C for up to 2 weeks. For long term storage store at -20°C in small aliquots to prevent freeze-thaw cycles.
Note	For research use only
Expiration Date	12 months from date of receipt.

Retlirafusp Alfa binds with PD-L1

Detects recombinant PDL1 (Catalog No: orb2967217) in indirect ELISA.



SDS-PAGE for Research Grade Retlirafusp Alfa.

Biorbyt Ltd.

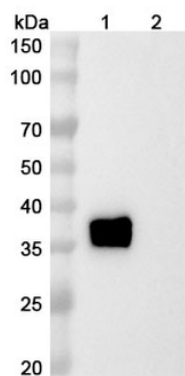
7 Signet Court, Swann Road
Cambridge
CB5 8LA
United Kingdom

Email: info@biorbyt.com, support@biorbyt.com
Phone: +44 (0)1223 859353 | Fax: +1 (415) 651-8558

Biorbyt LLC

68 TW Alexander Drive
Research Triangle Park
Durham
NC 27713-2847
United States

Email: info@biorbyt.com, support@biorbyt.com
Phone: +1 (415) 906-5211 | Fax: +1 (415) 651-8558



Western blot analysis was performed using anti-PDL1 monoclonal antibody at 1 $\mu\text{g}/\text{mL}$ on various samples. Lane 1: recombinant human PDL1, Lane 2: Negative control.

Biorbyt Ltd.

7 Signet Court, Swann Road
Cambridge
CB5 8LA
United Kingdom

Email: info@biorbyt.com, support@biorbyt.com

Phone: [+44 \(0\)1223 859353](tel:+44(0)1223859353) | Fax: [+1 \(415\) 651-8558](tel:+1(415)651-8558)

Biorbyt LLC

68 TW Alexander Drive
Research Triangle Park
Durham
NC 27713-2847
United States

Email: info@biorbyt.com, support@biorbyt.com

Phone: [+1 \(415\) 906-5211](tel:+1(415)906-5211) | Fax: [+1 \(415\) 651-8558](tel:+1(415)651-8558)