

Product Datasheet

Recombinant Human EGFR/ERBB1/HER1 Protein, C-His (orb2969725)

Catalog Number	orb2969725
Category	Proteins
Description	Recombinant Human EGFR/ERBB1/HER1 Protein, C-His expressed in Mammalian Cells , spanning Met1-Ser645. Highlights His-Tagged: N-terminal 6×His tag for IMAC purification. Mammalian Expression: Proper folding and native glycosylation. High Purity: >90% purity verified by SDS-PAGE.
Form/Appearance	Lyophilized
Buffer/Preservatives	Lyophilized from a solution in PBS pH 7.4, 1mM EDTA, 4% Trehalose, 1% Mannitol.
Reconstitution	Reconstitute in sterile water for a stock solution.
Purity	>95% as determined by SDS-PAGE.
Protein Length	Met1-Ser645
UniProt ID	P00533
MW	71.82 kDa
Tested applications	ELISA, SDS-PAGE, WB
Expression System	Mammalian Cells
Endotoxins	Please contact with the lab for this information.
Biological Origin	Homo sapiens (Human)
Expression Region	Met1-Ser645

Biorbyt Ltd.

7 Signet Court, Swann Road
Cambridge
CB5 8LA
United Kingdom

Email: info@biorbyt.com, support@biorbyt.com
Phone: [+44 \(0\)1223 859353](tel:+44(0)1223859353) | Fax: [+1 \(415\) 651-8558](tel:+1(415)651-8558)

Biorbyt LLC

68 TW Alexander Drive
Research Triangle Park
Durham
NC 27713
United States

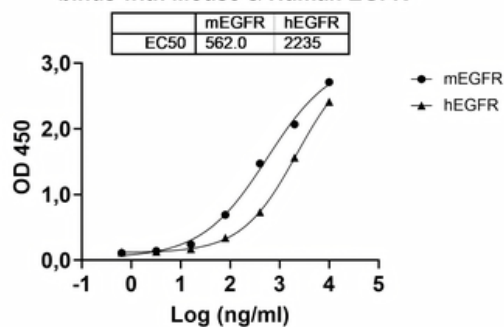
Email: info@biorbyt.com, support@biorbyt.com
Phone: [+1 \(415\) 906-5211](tel:+1(415)906-5211) | Fax: [+1 \(415\) 651-8558](tel:+1(415)651-8558)

Storage -20°C

Note For research use only

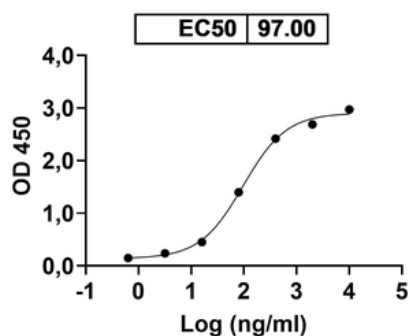
Expiration Date 6 months from date of receipt.

Anti-Mouse EGFR/ERBB1/HER1 Antibody binds with Mouse & Human EGFR



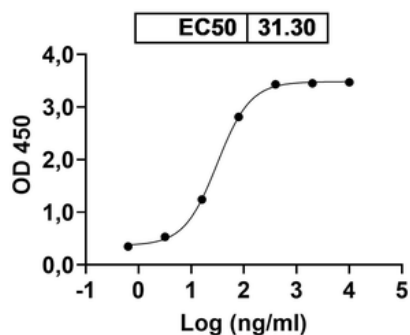
Detected by Anti-Mouse EGFR/ERBB1/HER1 (Catalog No: orb3151096) in indirect ELISA.

Dalmitamig binds with ERBB1



Detected by Dalmitamig (Catalog No: orb2976189) in indirect ELISA.

Pimurutamab binds with ERBB1



Detected by Pimurutamab (Catalog No: orb2978234) in indirect ELISA.

Biorbyt Ltd.

7 Signet Court, Swann Road
Cambridge
CB5 8LA
United Kingdom

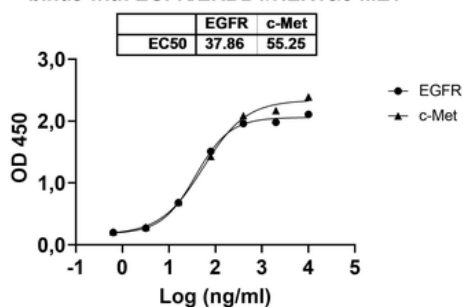
Email: info@biorbyt.com, support@biorbyt.com
Phone: +44 (0)1223 859353 | Fax: +1 (415) 651-8558

Biorbyt LLC

68 TW Alexander Drive
Research Triangle Park
Durham
NC 27713
United States

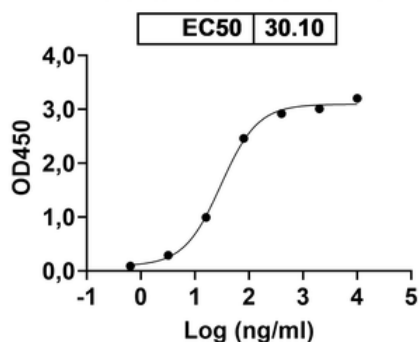
Email: info@biorbyt.com, support@biorbyt.com
Phone: +1 (415) 906-5211 | Fax: +1 (415) 651-8558

Bafisontamab binds with EGFR/ERBB1/HER1&c-MET



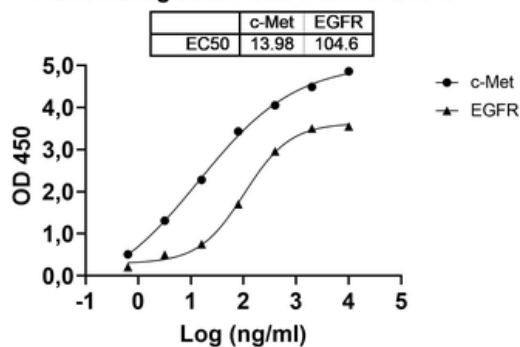
Detected by Research Grade Bafisontamab (Catalog No: orb2977763) in indirect ELISA.

Izalontamab binds with EGFR



Detected by Research Grade Izalontamab in indirect ELISA.

Pamvatamig binds with c-Met & EGFR



Detected by Research Grade Pamvatamig (Catalog No: orb2976304) in indirect ELISA.

Biorbyt Ltd.

7 Signet Court, Swann Road
Cambridge
CB5 8LA
United Kingdom

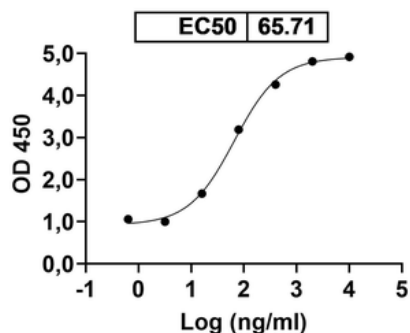
Email: info@biorbyt.com, support@biorbyt.com
Phone: +44 (0)1223 859353 | Fax: +1 (415) 651-8558

Biorbyt LLC

68 TW Alexander Drive
Research Triangle Park
Durham
NC 27713
United States

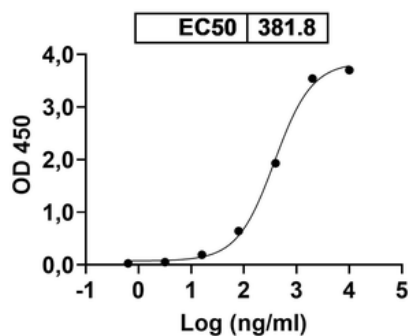
Email: info@biorbyt.com, support@biorbyt.com
Phone: +1 (415) 906-5211 | Fax: +1 (415) 651-8558

Tilatamig binds with c-Met

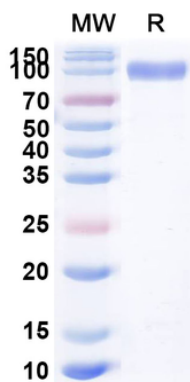


Detected by Research Grade Tilatamig (Catalog No: orb2976156) in indirect ELISA.

Umizortamig binds with ERBB1



Detected by Umizortamig (Catalog No: orb2977116) in indirect ELISA.



SDS-PAGE for Recombinant Human EGFR/ERBB1/HER1 Protein, C-His.

Biorbyt Ltd.

7 Signet Court, Swann Road
Cambridge
CB5 8LA
United Kingdom

Email: info@biorbyt.com, support@biorbyt.com
Phone: +44 (0)1223 859353 | Fax: +1 (415) 651-8558

Biorbyt LLC

68 TW Alexander Drive
Research Triangle Park
Durham
NC 27713
United States

Email: info@biorbyt.com, support@biorbyt.com
Phone: +1 (415) 906-5211 | Fax: +1 (415) 651-8558