

Product Datasheet

Recombinant Human CD279/PDCD1/PD1 Protein, C-His (orb2967864)

Catalog Number	orb2967864
Category	Proteins
Description	Recombinant Human CD279/PDCD1/PD1 Protein, C-His expressed in Mammalian Cells, spanning Pro21-Gln167. Purity: >90% by SDS-PAGE. Highlights His-Tagged: N-terminal 6×His tag for IMAC purification. Mammalian Expression: Proper folding and native glycosylation. High Purity: >90% purity verified by SDS-PAGE.
Form/Appearance	Liquid
Buffer/Preservatives	PBS pH 7.4
Purity	>90% as determined by SDS-PAGE.
Protein Length	Pro21-Gln167
UniProt ID	Q15116
MW	19.73 kDa
Tested applications	ELISA, SDS-PAGE, WB
Expression System	Mammalian Cells
Endotoxins	Please contact with the lab for this information.
Biological Origin	Homo sapiens (Human)
Expression Region	Pro21-Gln167
Storage	-20°C

Biorbyt Ltd.

7 Signet Court, Swann Road
Cambridge
CB5 8LA
United Kingdom

Email: info@biorbyt.com, support@biorbyt.com
Phone: [+44 \(0\)1223 859353](tel:+44(0)1223859353) | Fax: [+1 \(415\) 651-8558](tel:+1(415)651-8558)

Biorbyt LLC

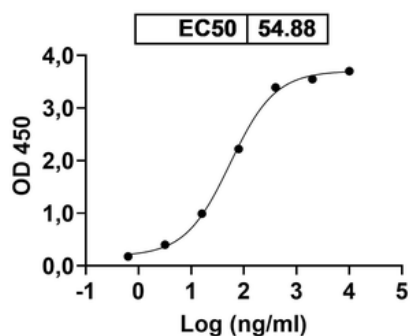
68 TW Alexander Drive
Research Triangle Park
Durham
NC 27713
United States

Email: info@biorbyt.com, support@biorbyt.com
Phone: [+1 \(415\) 906-5211](tel:+1(415)906-5211) | Fax: [+1 \(415\) 651-8558](tel:+1(415)651-8558)

Note For research use only

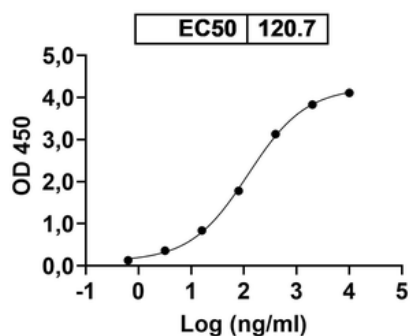
Expiration Date 6 months from date of receipt.

Acrixolimab binds with PD1



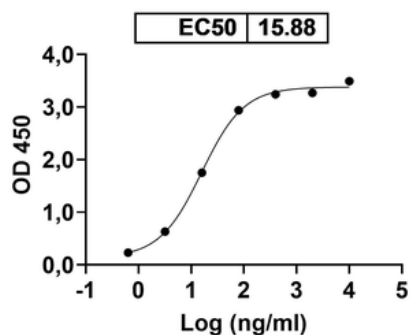
Detected by Acrixolimab (Catalog No: orb2977727) in indirect ELISA.

Cugrastomig binds with PD1



Detected by Cugrastomig (Catalog No: orb2976190) in indirect ELISA.

Danvilostomig binds with PD1



Detected by Danvilostomig (Catalog No: orb2977133) in indirect ELISA.

Biorbyt Ltd.

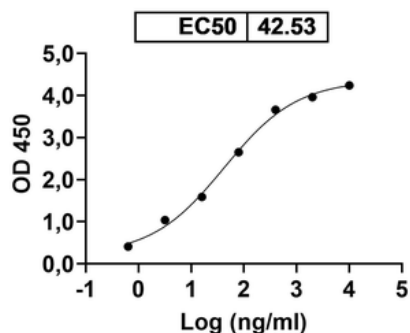
7 Signet Court, Swann Road
Cambridge
CB5 8LA
United Kingdom

Email: info@biorbyt.com, support@biorbyt.com
Phone: +44 (0)1223 859353 | Fax: +1 (415) 651-8558

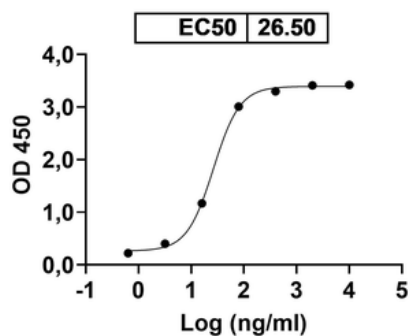
Biorbyt LLC

68 TW Alexander Drive
Research Triangle Park
Durham
NC 27713
United States

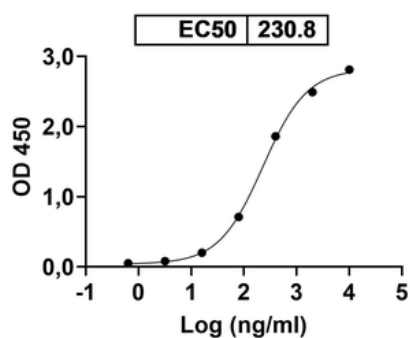
Email: info@biorbyt.com, support@biorbyt.com
Phone: +1 (415) 906-5211 | Fax: +1 (415) 651-8558

Fanastomig binds with PD1

Detected by Fanastomig (Catalog No: orb2976318) in indirect ELISA.

Lomvastomig binds with PD1

Detected by Lomvastomig (Catalog No: orb2977134) in indirect ELISA.

Lorigerlimab binds with PD1

Detected by Lorigerlimab (Catalog No: orb2977788) in indirect ELISA.

Biorbyt Ltd.

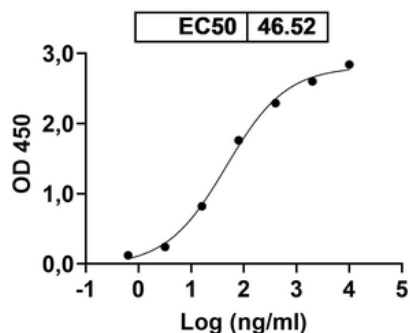
7 Signet Court, Swann Road
Cambridge
CB5 8LA
United Kingdom

Email: info@biorbyt.com, support@biorbyt.com
Phone: +44 (0)1223 859353 | Fax: +1 (415) 651-8558

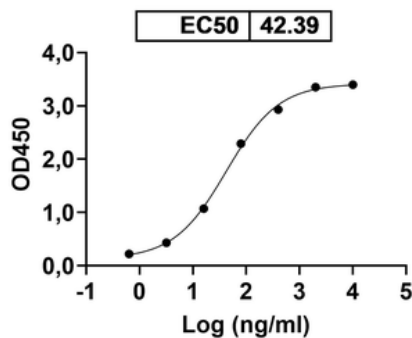
Biorbyt LLC

68 TW Alexander Drive
Research Triangle Park
Durham
NC 27713
United States

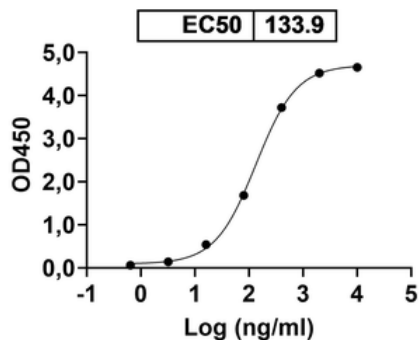
Email: info@biorbyt.com, support@biorbyt.com
Phone: +1 (415) 906-5211 | Fax: +1 (415) 651-8558

Pradusinstobart binds with PD1

Detected by Pradusinstobart (Catalog No: orb2977136) in indirect ELISA.

Geptanolimab binds with PD1

Detected by Research Grade Geptanolimab (Cat No.: orb2977863) in indirect ELISA.

Ivonescimab binds with PD1

Detected by Research Grade Ivonescimab (Cat No.: orb2977790) in indirect ELISA.

Biorbyt Ltd.

7 Signet Court, Swann Road
Cambridge
CB5 8LA
United Kingdom

Email: info@biorbyt.com, support@biorbyt.com

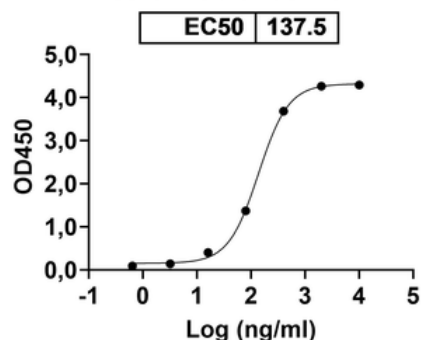
Phone: +44 (0)1223 859353 | Fax: +1 (415) 651-8558

Biorbyt LLC

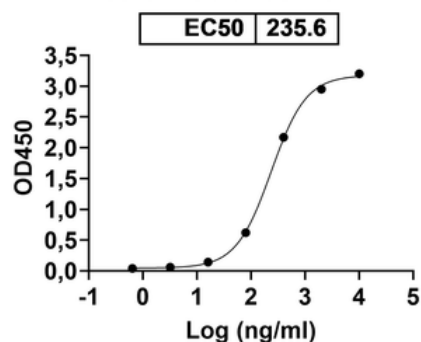
68 TW Alexander Drive
Research Triangle Park
Durham
NC 27713
United States

Email: info@biorbyt.com, support@biorbyt.com

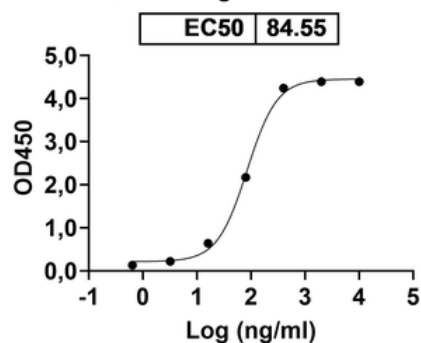
Phone: +1 (415) 906-5211 | Fax: +1 (415) 651-8558

Rezalimab binds with PD1

Detected by Research Grade Rezalimab (Cat No.: orb2977730) in indirect ELISA.

Rezalimab binds with PDL1

Detected by Research Grade Rezalimab in indirect ELISA.

Volrustomig binds with PD1

Detected by Research Grade Volrustomig (Cat No.: orb2977132) in indirect ELISA.

Biorbyt Ltd.

7 Signet Court, Swann Road
Cambridge
CB5 8LA
United Kingdom

Email: info@biorbyt.com, support@biorbyt.com

Phone: +44 (0)1223 859353 | Fax: +1 (415) 651-8558

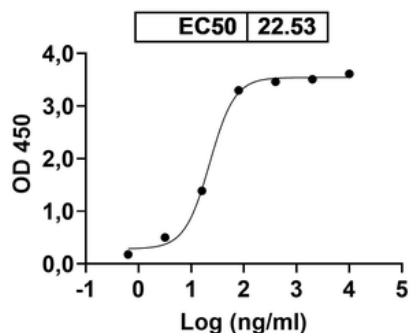
Biorbyt LLC

68 TW Alexander Drive
Research Triangle Park
Durham
NC 27713
United States

Email: info@biorbyt.com, support@biorbyt.com

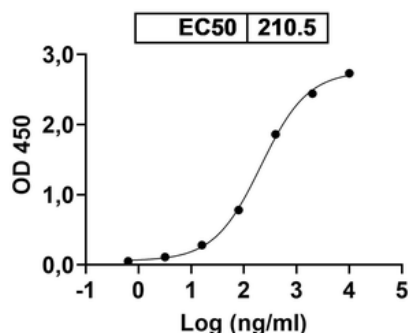
Phone: +1 (415) 906-5211 | Fax: +1 (415) 651-8558

Zeluvalimab binds with PD1

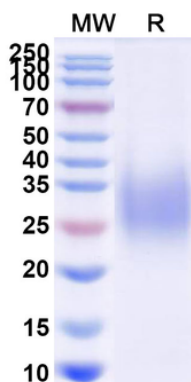


Detected by Zeluvalimab (Catalog No: orb2977860) in indirect ELISA.

zimberelimab binds with PD1



Detected by Zimbirelimab (Catalog No: orb2977858) in indirect ELISA.



SDS-PAGE for Recombinant Human CD279/PDCD1/PD1 Protein, C-His.

Biorbyt Ltd.

7 Signet Court, Swann Road
Cambridge
CB5 8LA
United Kingdom

Email: info@biorbyt.com, support@biorbyt.com
Phone: +44 (0)1223 859353 | Fax: +1 (415) 651-8558

Biorbyt LLC

68 TW Alexander Drive
Research Triangle Park
Durham
NC 27713
United States

Email: info@biorbyt.com, support@biorbyt.com
Phone: +1 (415) 906-5211 | Fax: +1 (415) 651-8558