

## Product Datasheet

# Citrullinated COL2A1 Mouse Monoclonal Antibody (orb2960660)

|                             |   |
|-----------------------------|---|
| <b>Catalog Number</b>       | orb2960660  |
| <b>Category</b>             | Antibodies  |
| <b>Description</b>          | Anti-Human Citrullinated COL2A1 Antibody (BCEE6) is a mouse monoclonal antibody detecting COL2A1 in ELISA, IHC. Suitable for Human. |
| <b>Clonality</b>            | Monoclonal  |
| <b>Species/Host</b>         | Mouse   |
| <b>Isotype</b>              | IgG1  |
| <b>Conjugation</b>          | Unconjugated  |
| <b>Reactivity</b>           | Human   |
| <b>Form/Appearance</b>      | Liquid  |
| <b>Concentration</b>        | Lot dependent   |
| <b>Buffer/Preservatives</b> | 0.01M PBS, pH 7.4.  |
| <b>Purity</b>               | >95% as determined by SDS-PAGE.   |
| <b>Purification</b>         | Protein A/G purified from cell culture supernatant.   |
| <b>UniProt ID</b>           | <b>P02458</b>   |
| <b>Tested applications</b>  | ELISA, IHC  |
| <b>Antibody Type</b>        | Primary Antibody  |

### Biorbyt Ltd.

7 Signet Court, Swann Road  
Cambridge  
CB5 8LA  
United Kingdom

Email: [info@biorbyt.com](mailto:info@biorbyt.com), [support@biorbyt.com](mailto:support@biorbyt.com)

Phone: [+44 \(0\)1223 859353](tel:+44(0)1223859353) | Fax: [+1 \(415\) 651-8558](tel:+1(415)651-8558)

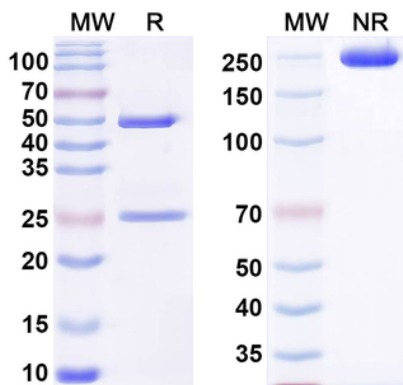
### Biorbyt LLC

68 TW Alexander Drive  
Research Triangle Park  
Durham  
NC 27713  
United States

Email: [info@biorbyt.com](mailto:info@biorbyt.com), [support@biorbyt.com](mailto:support@biorbyt.com)

Phone: [+1 \(415\) 906-5211](tel:+1(415)906-5211) | Fax: [+1 \(415\) 651-8558](tel:+1(415)651-8558)

|                        |   |
|------------------------|---|
| <b>Clone Number</b>    | BCEE6   |
| <b>Endotoxins</b>      | Please contact with the lab for this information.   |
| <b>Storage</b>         | Maintain refrigerated at 2-8°C for up to 2 weeks. For long term storage store at -20°C in small aliquots to prevent freeze-thaw cycles. |
| <b>Note</b>            | For research use only   |
| <b>Expiration Date</b> | 12 months from date of receipt.   |



SDS-PAGE for Anti-Human Citrullinated COL2A1 Antibody.

**Biorbyt Ltd.**

7 Signet Court, Swann Road  
Cambridge  
CB5 8LA  
United Kingdom

Email: [info@biorbyt.com](mailto:info@biorbyt.com), [support@biorbyt.com](mailto:support@biorbyt.com)

Phone: [+44 \(0\)1223 859353](tel:+44(0)1223859353) | Fax: [+1 \(415\) 651-8558](tel:+1(415)651-8558)

**Biorbyt LLC**

68 TW Alexander Drive  
Research Triangle Park  
Durham  
NC 27713  
United States

Email: [info@biorbyt.com](mailto:info@biorbyt.com), [support@biorbyt.com](mailto:support@biorbyt.com)

Phone: [+1 \(415\) 906-5211](tel:+1(415)906-5211) | Fax: [+1 \(415\) 651-8558](tel:+1(415)651-8558)