

Product Datasheet

GLP1R Mouse Monoclonal Antibody (orb2960296)

Catalog Number	orb2960296
Category	Antibodies
Description	Anti-Human GLP1R Antibody (BUCC2731) is a mouse monoclonal antibody detecting GLP-1 receptor in ELISA, IF, IHC. Suitable for Human and Monkey. Highlights Multi-Application: Validated across multiple applications.
Clonality	Monoclonal
Species/Host	Mouse
Isotype	IgG2a, kappa
Conjugation	Unconjugated
Reactivity	Human, Monkey
Form/Appearance	Liquid
Concentration	Lot dependent
Buffer/Preservatives	0.01M PBS, pH 7.4.
Purity	>95% as determined by SDS-PAGE.
Purification	Protein A/G purified from cell culture supernatant.
UniProt ID	P43220
Tested applications	ELISA, IF, IHC
Antibody Type	Primary Antibody
Clone Number	BUCC2731

Biorbyt Ltd.

7 Signet Court, Swann Road
Cambridge
CB5 8LA
United Kingdom

Email: info@biorbyt.com, support@biorbyt.com

Phone: [+44 \(0\)1223 859353](tel:+44(0)1223859353) | Fax: [+1 \(415\) 651-8558](tel:+1(415)651-8558)

Biorbyt LLC

68 TW Alexander Drive
Research Triangle Park
Durham
NC 27713
United States

Email: info@biorbyt.com, support@biorbyt.com

Phone: [+1 \(415\) 906-5211](tel:+1(415)906-5211) | Fax: [+1 \(415\) 651-8558](tel:+1(415)651-8558)

Endotoxins

Please contact with the lab for this information.

Storage

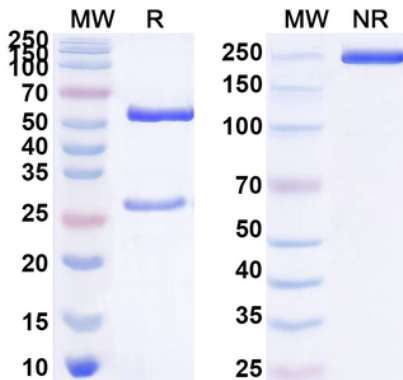
Maintain refrigerated at 2-8°C for up to 2 weeks. For long term storage store at -20°C in small aliquots to prevent freeze-thaw cycles.

Note

For research use only

Expiration Date

12 months from date of receipt.



SDS-PAGE for Anti-Human GLP1R Antibody.

Biorbyt Ltd.

7 Signet Court, Swann Road
Cambridge
CB5 8LA
United Kingdom

Email: info@biorbyt.com, support@biorbyt.com

Phone: [+44 \(0\)1223 859353](tel:+44(0)1223859353) | Fax: [+1 \(415\) 651-8558](tel:+1(415)651-8558)

Biorbyt LLC

68 TW Alexander Drive
Research Triangle Park
Durham
NC 27713
United States

Email: info@biorbyt.com, support@biorbyt.com

Phone: [+1 \(415\) 906-5211](tel:+1(415)906-5211) | Fax: [+1 \(415\) 651-8558](tel:+1(415)651-8558)