

Product Datasheet

PINK1 Mouse Monoclonal Antibody (orb2957674)

Catalog Number	orb2957674
Category	Antibodies
Description	Anti-PINK1 Antibody (BP579X8) is a mouse monoclonal antibody detecting PINK1 in IHC, WB. Suitable for Human, Mouse, and Rat. Highlights Multi-Species: Cross-reactive for translational research.
Clonality	Monoclonal
Species/Host	Mouse
Isotype	IgG2a, kappa
Conjugation	Unconjugated
Reactivity	Human, Mouse, Rat
Form/Appearance	Liquid
Concentration	Lot dependent
Buffer/Preservatives	0.01M PBS, pH 7.4.
Purity	>95% as determined by SDS-PAGE.
Purification	Protein A/G purified from cell culture supernatant.
Tested applications	IHC, WB
Antibody Type	Primary Antibody
Clone Number	BP579X8
Endotoxins	Please contact with the lab for this information.

Biorbyt Ltd.

7 Signet Court, Swann Road
Cambridge
CB5 8LA
United Kingdom

Email: info@biorbyt.com, support@biorbyt.com

Phone: [+44 \(0\)1223 859353](tel:+44(0)1223859353) | Fax: [+1 \(415\) 651-8558](tel:+1(415)651-8558)

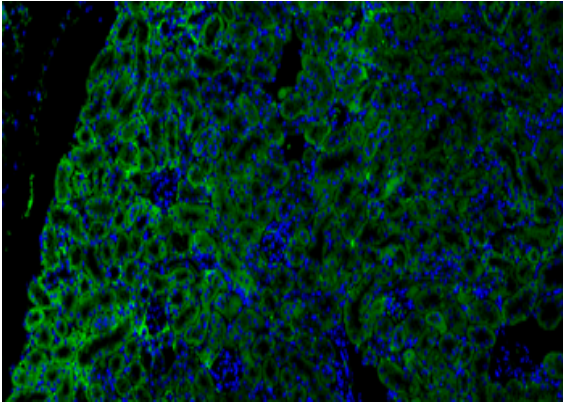
Biorbyt LLC

68 TW Alexander Drive
Research Triangle Park
Durham
NC 27713
United States

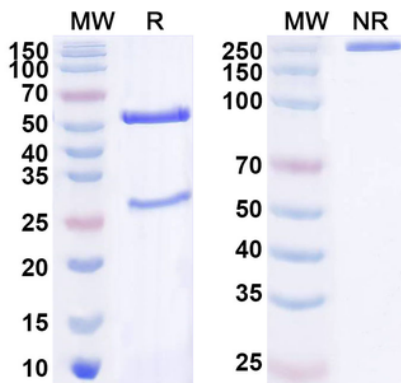
Email: info@biorbyt.com, support@biorbyt.com

Phone: [+1 \(415\) 906-5211](tel:+1(415)906-5211) | Fax: [+1 \(415\) 651-8558](tel:+1(415)651-8558)

Storage	Maintain refrigerated at 2-8°C for up to 2 weeks. For long term storage store at -20°C in small aliquots to prevent freeze-thaw cycles.
Note	For research use only
Expiration Date	12 months from date of receipt.



Mouse kidney tissue section stained by immunofluorescence showing PINK1 protein (green) mainly in renal tubules, with nuclei counterstained by DAPI (blue).



SDS-PAGE for Anti-PINK1 Antibody.

Biorbyt Ltd.

7 Signet Court, Swann Road
Cambridge
CB5 8LA
United Kingdom

Email: info@biorbyt.com, support@biorbyt.com

Phone: +44 (0)1223 859353 | Fax: +1 (415) 651-8558

Biorbyt LLC

68 TW Alexander Drive
Research Triangle Park
Durham
NC 27713
United States

Email: info@biorbyt.com, support@biorbyt.com

Phone: +1 (415) 906-5211 | Fax: +1 (415) 651-8558