

Product Datasheet

Chikungunya Virus/CHIKV VLP Human Monoclonal Antibody (orb2956843)

Catalog Number	orb2956843
Category	Antibodies
Description	InVivoMAb Anti-Chikungunya Virus/CHIKV VLP Antibody (BO464) is a human monoclonal antibody detecting Structural polyprotein in ELISA, Neutralization. Suitable for Chikungunya virus.
Clonality	Monoclonal
Species/Host	Human
Isotype	IgG1
Conjugation	Unconjugated
Reactivity	Virus
Form/Appearance	Liquid
Concentration	Lot dependent
Buffer/Preservatives	0.01M PBS, pH 7.4.
Purity	>95% as determined by SDS-PAGE.
Purification	Protein A/G purified from cell culture supernatant.
UniProt ID	Q1H8W5, Q5XXP3, Q8JUX5
Tested applications	ELISA, NeA
Antibody Type	Recombinant Antibody

Biorbyt Ltd.

7 Signet Court, Swann Road
Cambridge
CB5 8LA
United Kingdom

Email: info@biorbyt.com, support@biorbyt.com

Phone: [+44 \(0\)1223 859353](tel:+44(0)1223859353) | Fax: [+1 \(415\) 651-8558](tel:+1(415)651-8558)

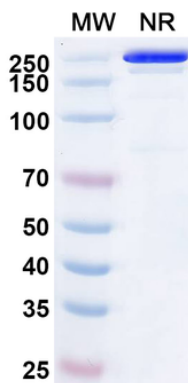
Biorbyt LLC

68 TW Alexander Drive
Research Triangle Park
Durham
NC 27713-2847
United States

Email: info@biorbyt.com, support@biorbyt.com

Phone: [+1 \(415\) 906-5211](tel:+1(415)906-5211) | Fax: [+1 \(415\) 651-8558](tel:+1(415)651-8558)

Clone Number	BO464
Endotoxins	Please contact with the lab for this information.
Storage	Maintain refrigerated at 2-8°C for up to 2 weeks. For long term storage store at -20°C in small aliquots to prevent freeze-thaw cycles.
Note	For research use only
Expiration Date	12 months from date of receipt.



SDS-PAGE for InVivoMAb Anti-Chikungunya Virus/CHIKV VLP Antibody.

Biorbyt Ltd.

7 Signet Court, Swann Road
Cambridge
CB5 8LA
United Kingdom

Email: info@biorbyt.com, support@biorbyt.com

Phone: [+44 \(0\)1223 859353](tel:+44(0)1223859353) | Fax: [+1 \(415\) 651-8558](tel:+1(415)651-8558)

Biorbyt LLC

68 TW Alexander Drive
Research Triangle Park
Durham
NC 27713-2847
United States

Email: info@biorbyt.com, support@biorbyt.com

Phone: [+1 \(415\) 906-5211](tel:+1(415)906-5211) | Fax: [+1 \(415\) 651-8558](tel:+1(415)651-8558)